

WHERE **BIG IDEAS**  
TAKE OFF

1185 AVENUE OF THE AMERICAS

A photograph of the modern glass and stone entrance of the 1185 Avenue of the Americas building at night. The entrance features large glass doors and windows, revealing a brightly lit interior with a reception desk and decorative elements. The building's facade is illuminated by warm lights, and the address "1185 AVENUE OF THE AMERICAS" is displayed in glowing letters above the entrance.

**1185** AVENUE OF THE AMERICAS



Completed Capital Program



Central Park Views



Efficient Floor Plates



Direct Access to  
Rockefeller Center Retail and  
Transportation Concourse



Transit-Centric Location -  
Easy Proximity to Grand Central,  
Penn Station, Port Authority  
and MTA Subway Lines

1 2 3 4 5 6 7 A E B D F M



Outdoor Plaza, In-building  
Bank, Restaurant, Theater and  
In-lobby Artisan Coffee Shop







A comprehensive lobby and elevator cab renovation was recently completed. In keeping with its pure international style, the renovation introduces a palette of timeless materials and unique design. The feature wall with Kenya Black Marble is a classic stone defined by its unique pattern, which showcases a depth of sophistication and superior quality creating an elegant and urban aesthetic in the modern design.



The revitalization continues with the white glass walls flowing seamlessly through the elevator lobby.

New elevator cabs compliment the distinctive design features of the lobby.





BATHROOM  
RENDERING

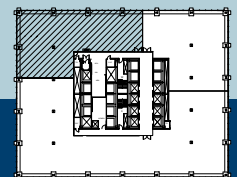
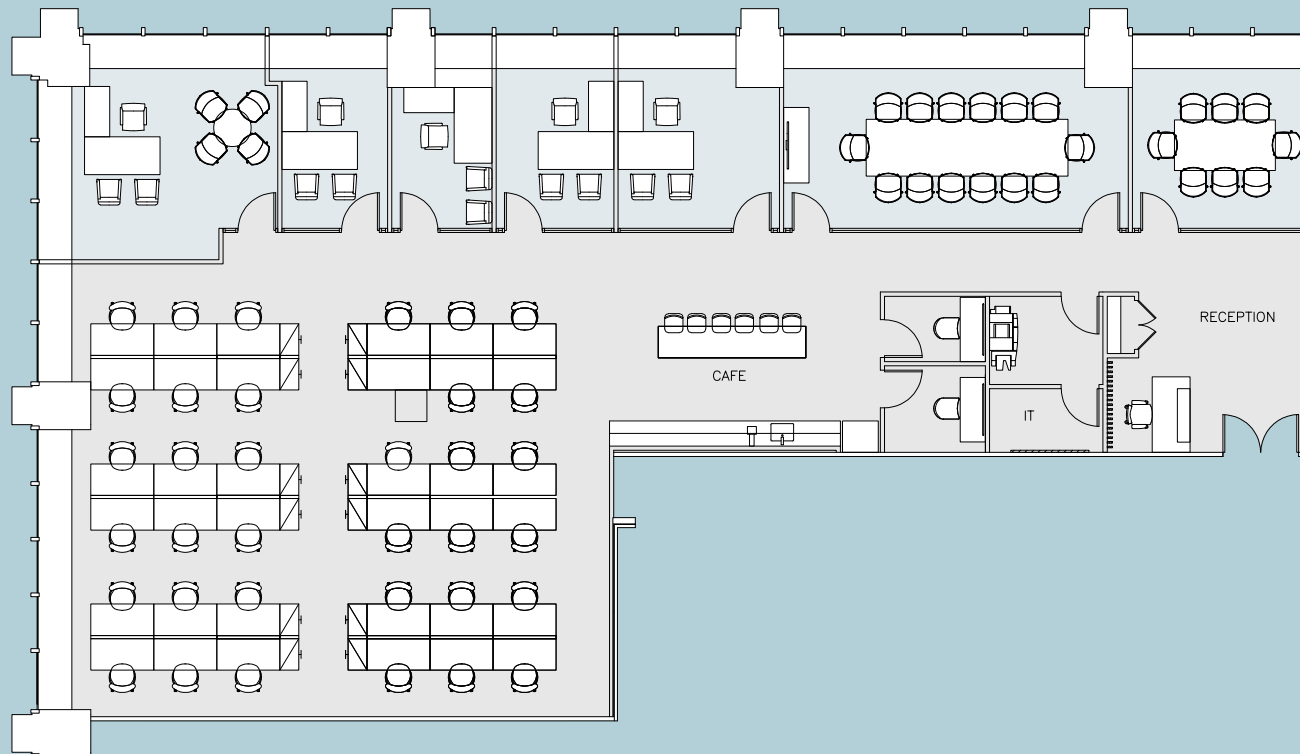




CREATIVE OFFICE  
RENDERING



## SUITE 1510 - 6,668 RSF - PREBUILD WITH SAMPLE FURNITURE



Offices: 5      Workstation: 35  
Conference Rooms: 2      Phone Rooms: 2      Cafe: 1      Reception: 1      **Total Personnel: 41**



SUITE 1520





SUITE 1520



SUITE 1520





SUITE 1520





26TH FLOOR





26TH FLOOR





26TH FLOOR