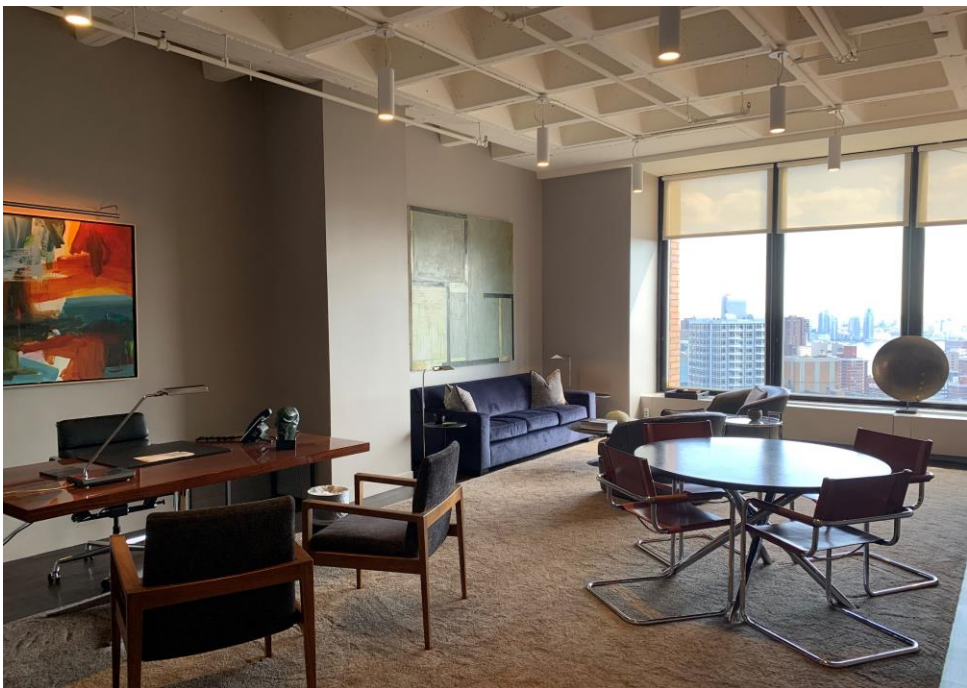
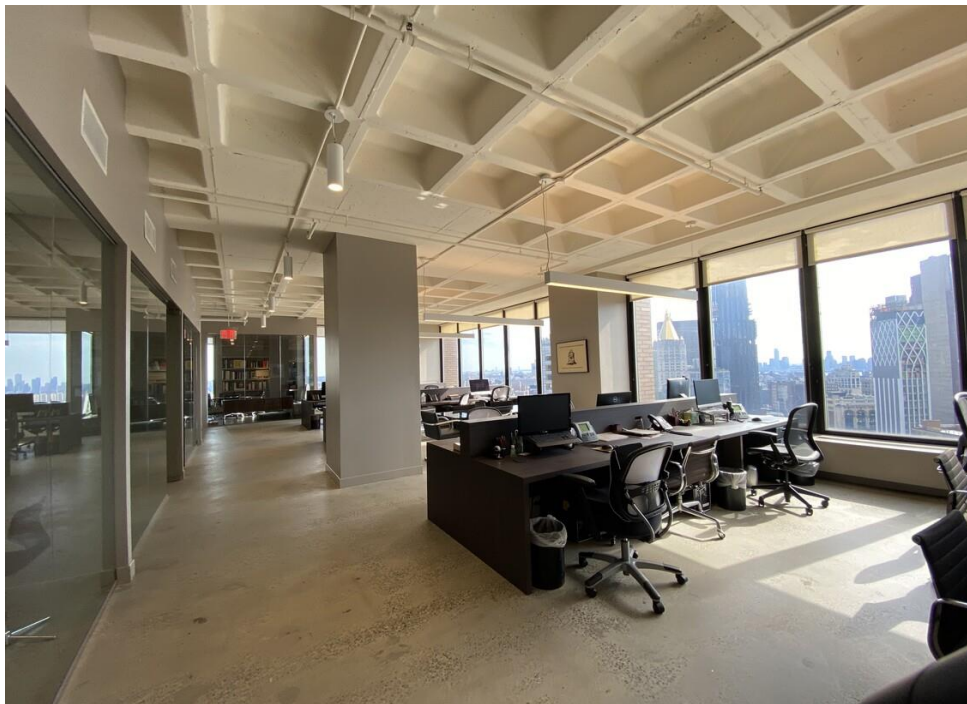


---

# 3 PARK AVENUE

---





## Premises

PARTIAL 29<sup>th</sup> FL  
Shared Sublease

1,000 - 3,000 RSF

## TERM

1 - 3 Years

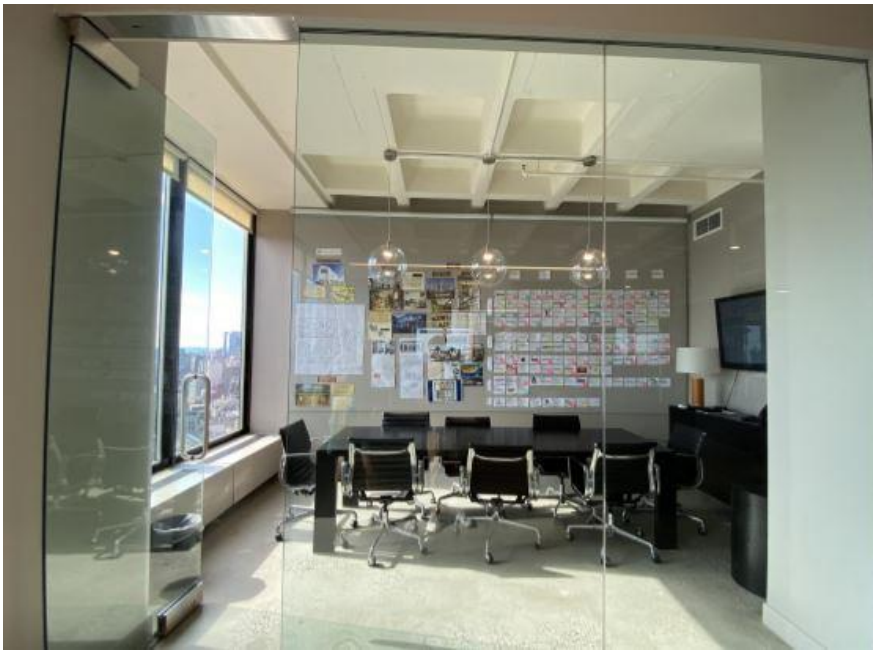
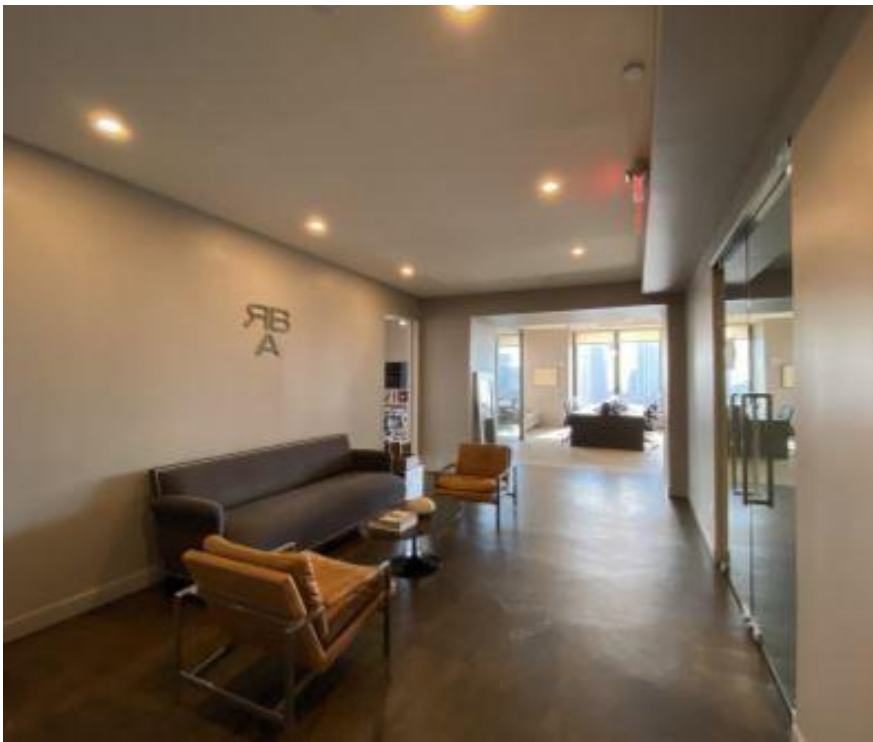
## RENT

INQUIRE

## SPACE FEATURES

- FULLY FURNISHED
- THREE (3) GLASS-FRONTED OFFICES
- ONE EXECUTIVE OFFICE
- 9 WORKSTATIONS
- ABOVE STANDARD FINISHES AND EXCEPTIONAL VIEWS THROUGHOUT THE SPACE
- THE EXECUTIVE OFFICE CAN BE LEASED SEPARATELY AND/OR CAN BE USED AS A TEAM ROOM FOR 4-6 PEOPLE
- SHARED USE OF CONFERENCE ROOM AND PANTRY





## Available for Sublease

## Shared Common Area

