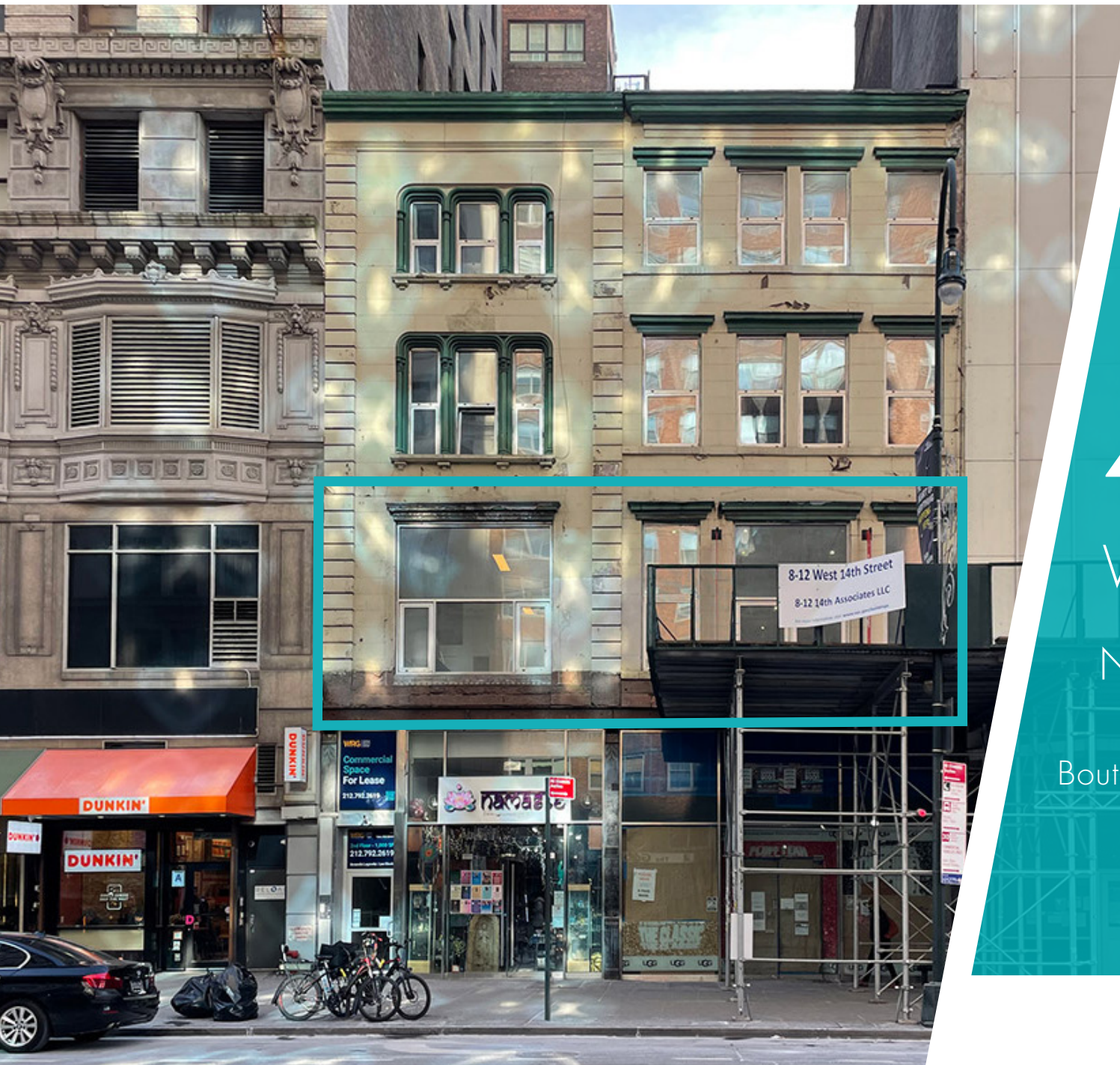


# Second Floor Space Available



# 4-6

West 14th Street  
New York, NY 10011

Boutique Union Square / Chelsea  
Office Space Available

# 4-6 West 14th Street

New York, NY 10011  
Between Fifth and Sixth Avenues

## SIZE (approx.)

Space A ..... 1,000 SF

Space B ..... 3,000 SF

## ASKING RENT

Upon Request

## COMMENTS

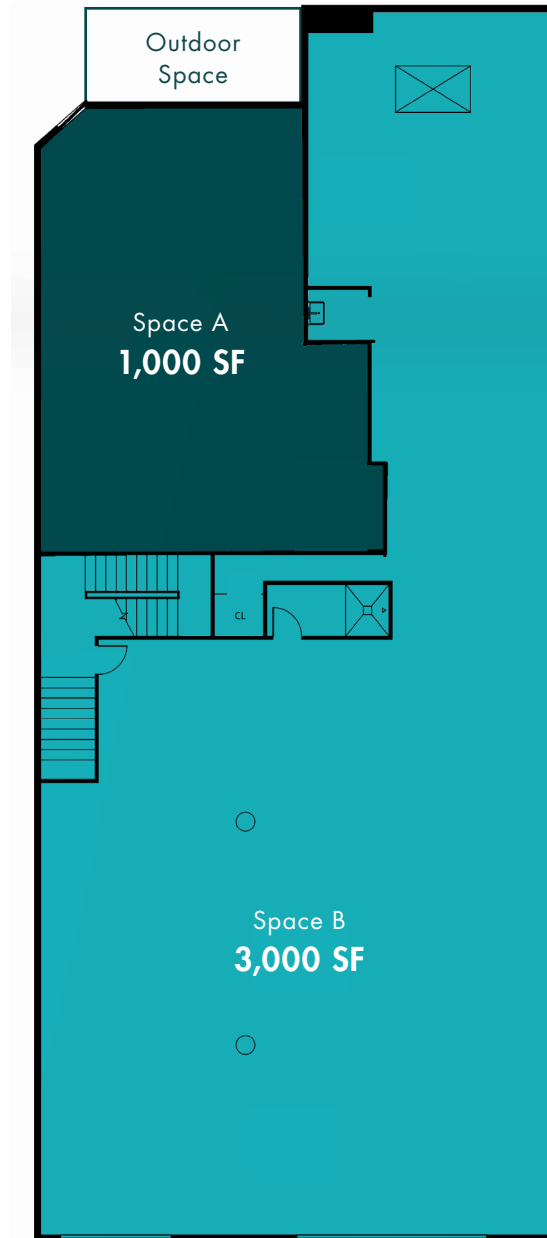
- Private outdoor space on the rear of Space B
- Full bathrooms and kitchens in both spaces
- Exposed brick interiors with 11' - 1" ceilings
- Large windows overlooking 14th Street which brings in incredible amounts of natural light

## NEARBY TRANSPORTATION

4 5 6 L N Q R W F M

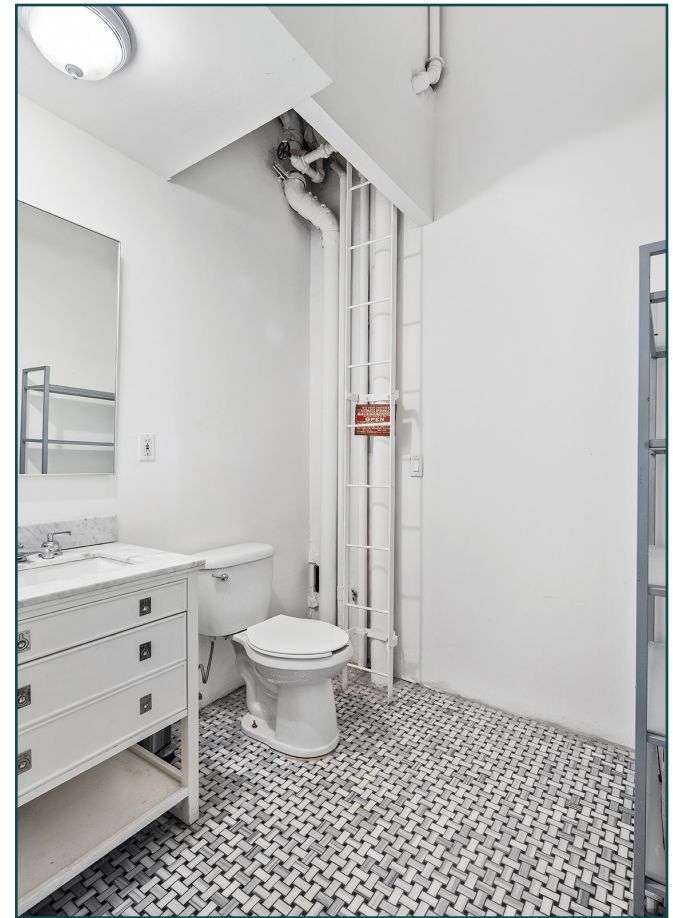


## Second Floor





# Space A Interior Photos





# Space B Interior Photos

