

211 E43

AT THIRD AVE



Premier turn-key installations
or completed pre-builts

One block from Grand
Central Terminal



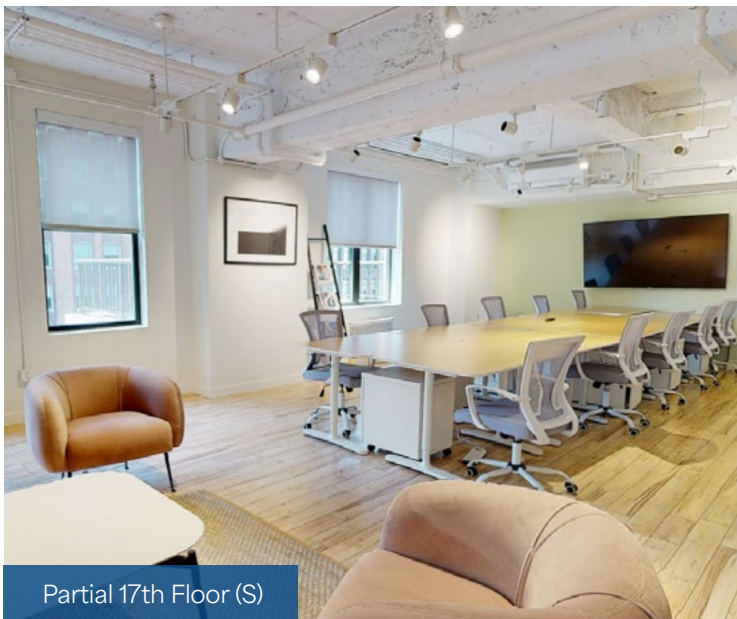
CURRENT AVAILABILITIES

Space	Size	Description
-------	------	-------------

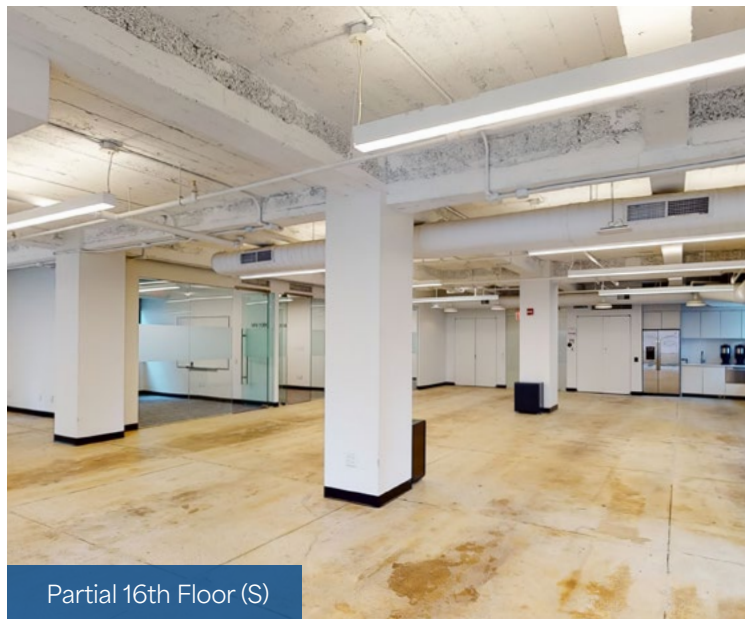
P 12th (N)	1,212 RSF	One office and balance of space open area; Landlord will renovate space to turn-key
------------	-----------	--



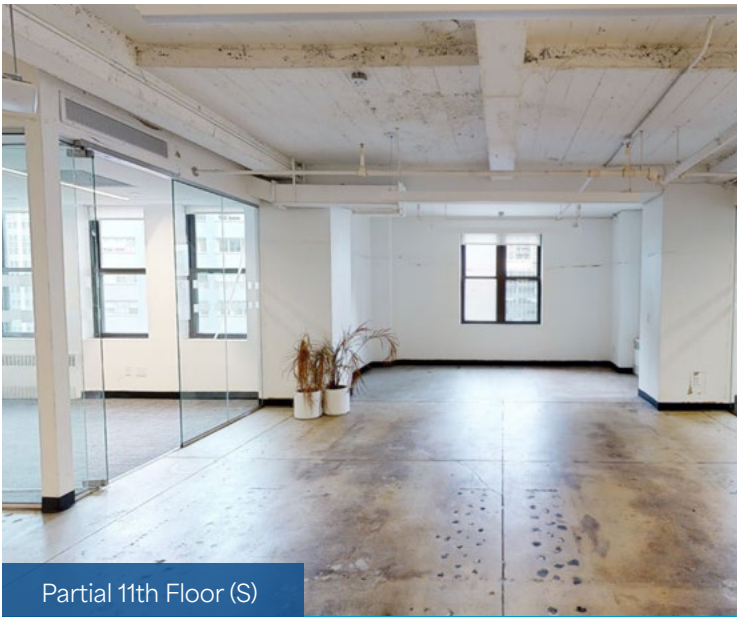
Lobby



Partial 17th Floor (S)



Partial 16th Floor (S)



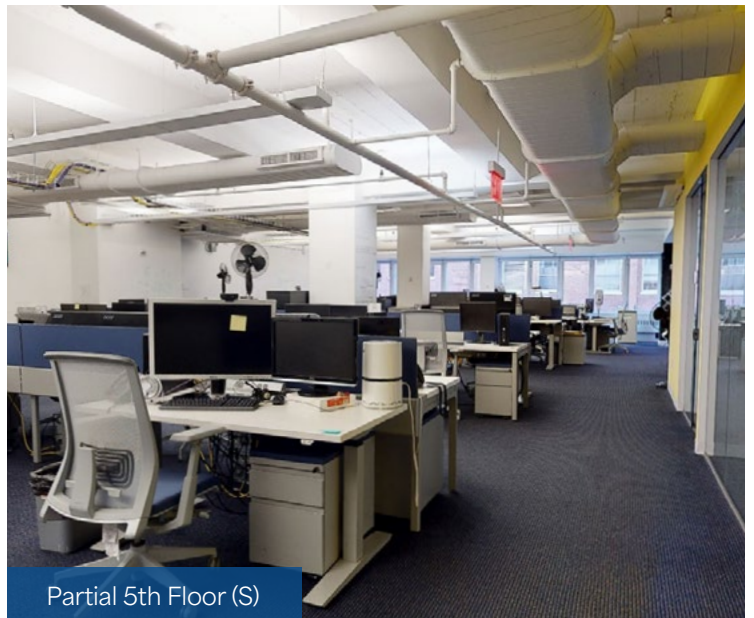
Partial 11th Floor (S)



Partial 9th Floor (S)



Partial 8th Floor (N)



Partial 5th Floor (S)

211 | E43

AT THIRD AVE

