

# YOUR GATEWAY TO **INSPIRED WORKSPACES**

*UNCOVER CREATIVITY NORTH OF HUDSON YARDS  
BOUTIQUE OFFICES, AFFORDABLE RENT*



**483** Tenth  
Avenue





## ***BUILDING INFORMATION***

*Fully ADA Accessible*

*Wood Timber Columns & Beams*

*Exposed Brick Walls*

*Fully wired spaces for data*

*24/7 Front Desk Security*

*Secure Key Fob Controlled*

*Elevator to each Floor*

*Shared ADA Compliant  
Bathrooms on each floor*

*Large Freight Elevator with  
Loading Dock*



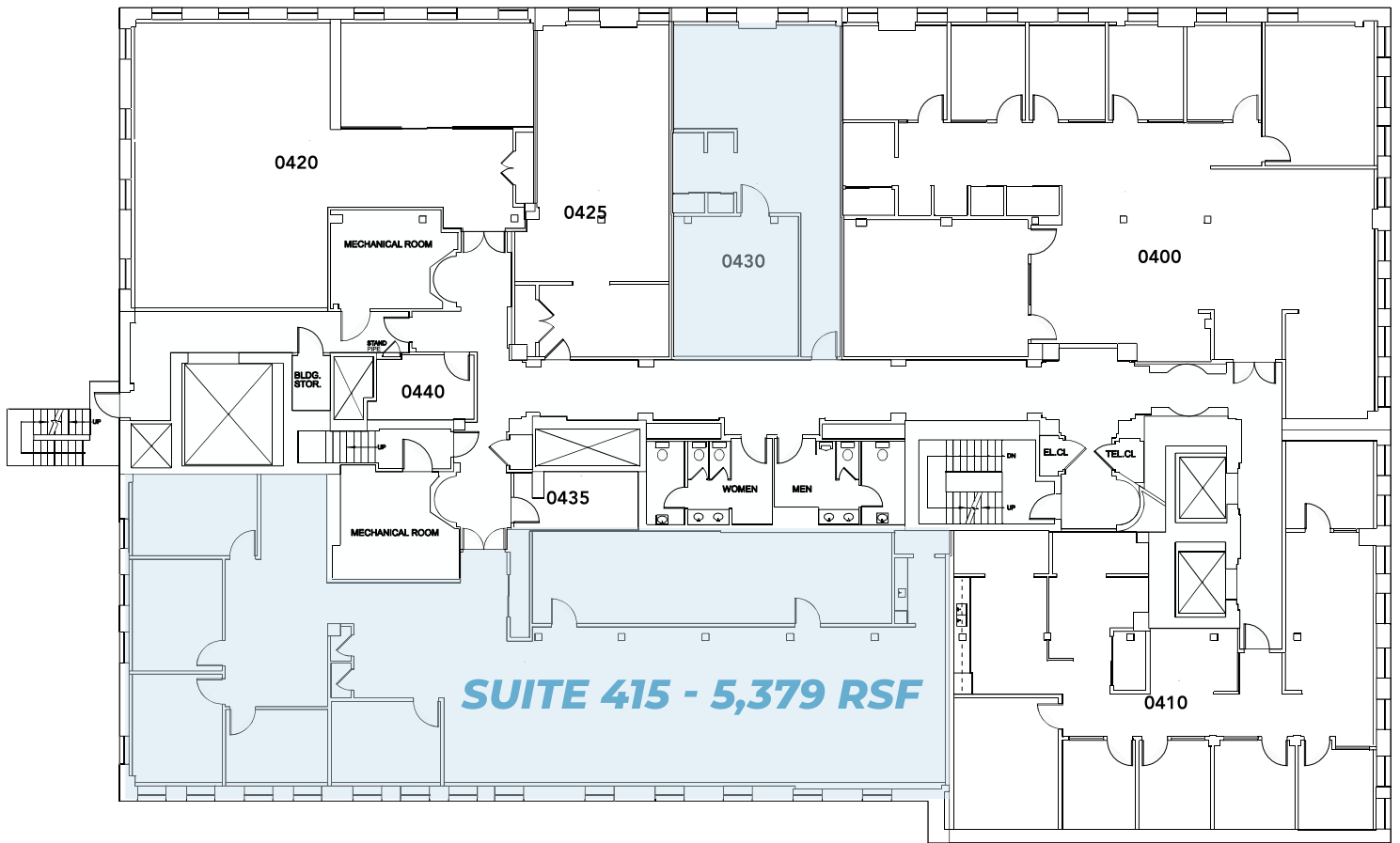
***BUILT AVAILABLE SPACES  
FROM 3,411 SF - 7,992 SF***

***Partial 2nd Floor - 3,411 SF &  
4,520 SF***

***Partial 4th Floor - 5,379 SF  
& 1,383 SF***

***Partial 5th Floor - 4,402 SF***

## SUITE 430 - 1,383 RSF





MOMOFUKU



KYMA



ZOU ZOU'S



GREYWIND



- 1 Nick + Stef's Steakhouse
- 2 Kabooz's Bar & Grill
- 3 Tir Na Nog
- 4 Suram Sushi
- 5 Finn's Bagels
- 6 Kyma Hudson Yards
- 7 Greywind
- 8 Fresh & Co.
- 9 Friedmans
- 10 Hudson Yards Tavern
- 11 Moynihan Food Hall
- 12 Zou Zou's
- 13 Ci Siamo
- 14 Momofuku
- 15 Miles
- 16 Butcher & Banker
- 17 Laduree
- 18 Russ & Daughters

