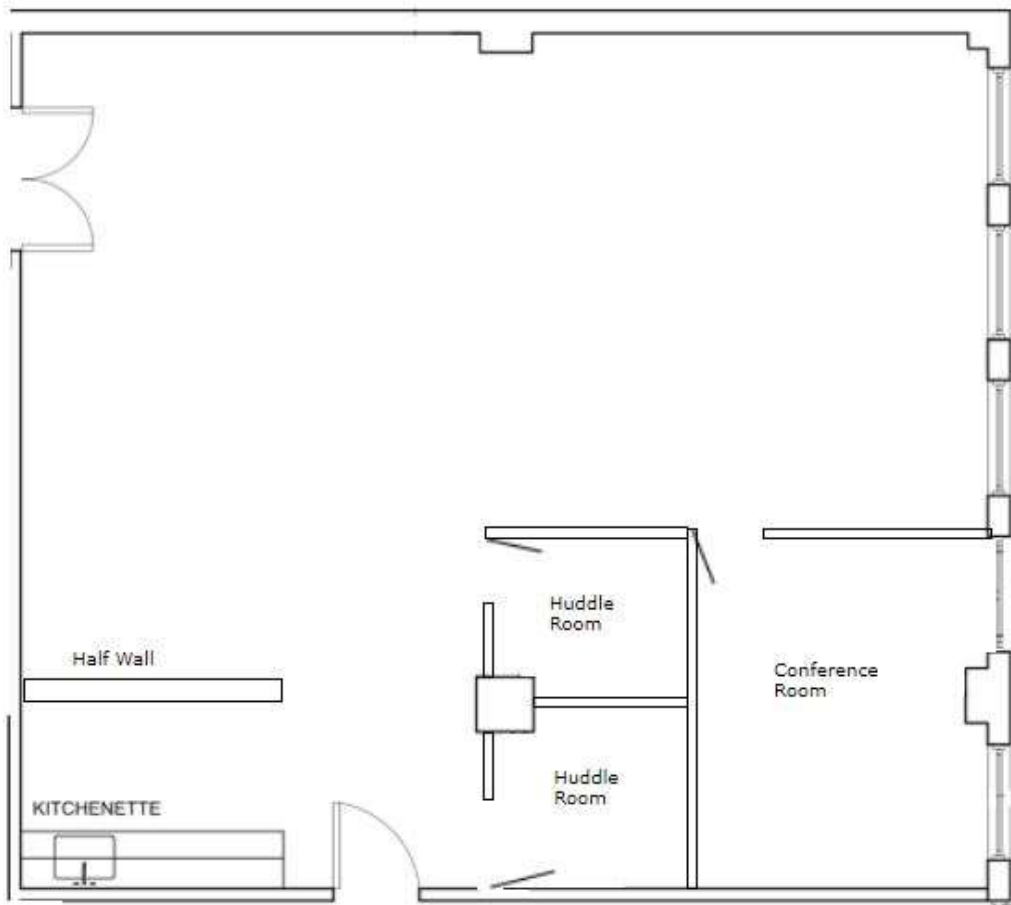


## 135 West 26 Street - Suite 3B - 1500 RSF

---

- Recently renovated with two huddle rooms and conference room •Wet pantry •Hardwood floors
- 11 ceilings •Submetered electric •Water/sprinkler \$55/\$25 per month •Technology fee \$20/mo.
- Term 3-5 years •Annual escalations 3% •Trash extra •Prop. share of RE Taxes over Base Year

### Floor Plan



## Photos

