

# CHELSEA ARTS CENTRE

- Prime West Chelsea location between West 24th and 25th Streets — steps from The High Line and Hudson River Park
- Several units available ranging in size from 1,198 rsf to 2,874 rsf
- Building features 24/7 access, operable windows, 3 elevators (1 oversized), tenant-controlled HVAC and high quality interior finishes
- Walking distance to Hudson Yards, Chelsea Waterside Park, Chelsea Dog Park, Pier 62 Skatepark, Pier 62 Carousel, Hudson River Park, Pier 63, The High Line, Chelsea Piers, and Little Island at Pier 55

**210 11<sup>TH</sup> AVE**

# CHELSEA ARTS CENTRE

210 11<sup>TH</sup> AVE

## Current Availabilities

Unit	Size	Possession
------	------	------------

Suite 906:	1,552 rsf	June 1, 2025
------------	-----------	--------------

wide open space

- 6 Windows providing south and east exposures and abundant natural light; built-out

### Comments:

- Boutique building offering flexible lease terms - Good city and river views
- All units feature polished concrete floors, operable windows, and exposed ceilings
- Most spaces are wide open with creative lighting and pantry
- Some spaces have offices and conference rooms
- Prime Chelsea neighborhood - Hudson Yards vicinity
- Spectrum (formerly Time Warner) & Verizon data/telecom
- Bike Room with storage for helmets and bike air pump

### Join Fashion Tenants such as:

Marc Cain, Gabriela Hearst, Jonathan Simkhai, Isabel Marant, Mackage,  
Rainbowwave

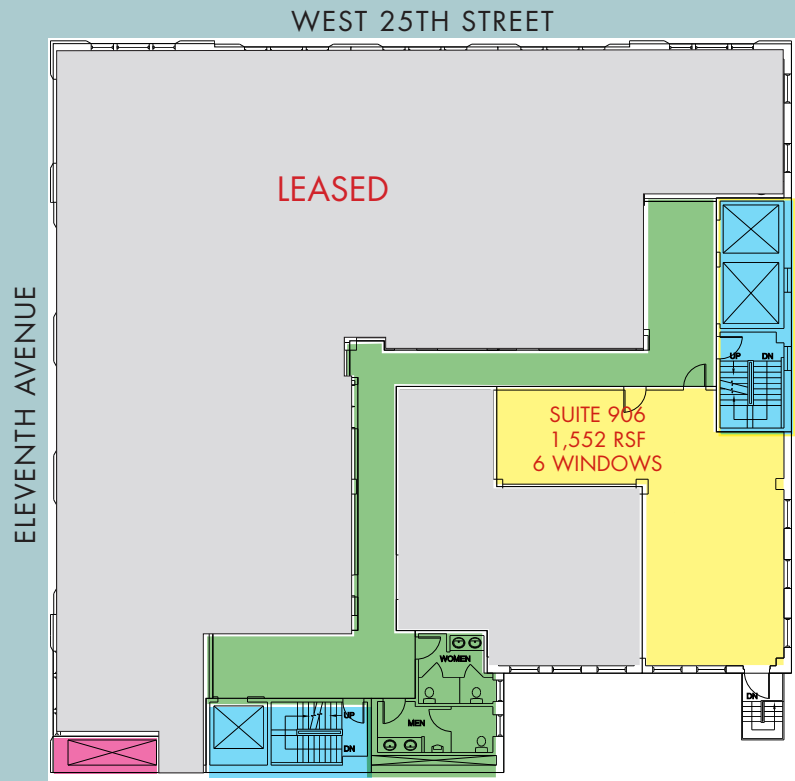
Citizens of Humanity, Michael Stars, EFG Apparel

### Join Art & Design Tenants such as:

Sears-Peyton Gallery, Amsterdam Whitney International Fine Art, Craig Greenberg Architects,  
Moleskin America Betsy Senior Fine Art, Minagawa Art Lines, Bossa Furniture, Team Laird,  
Fernando Jorge

## 210 ELEVENTH AVENUE

Suite 906: 1,552 rsf- 6 Windows providing south and east exposures and abundant natural light; Fully built-out wide open space



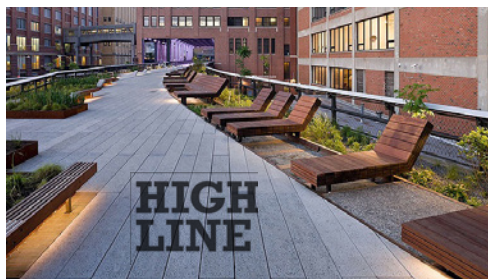
(for descriptive purposes only; not to scale.)







Hudson River Park



High Line



Hudson Yards