

350 Seventh Avenue

Furnished Sublease in Penn Plaza



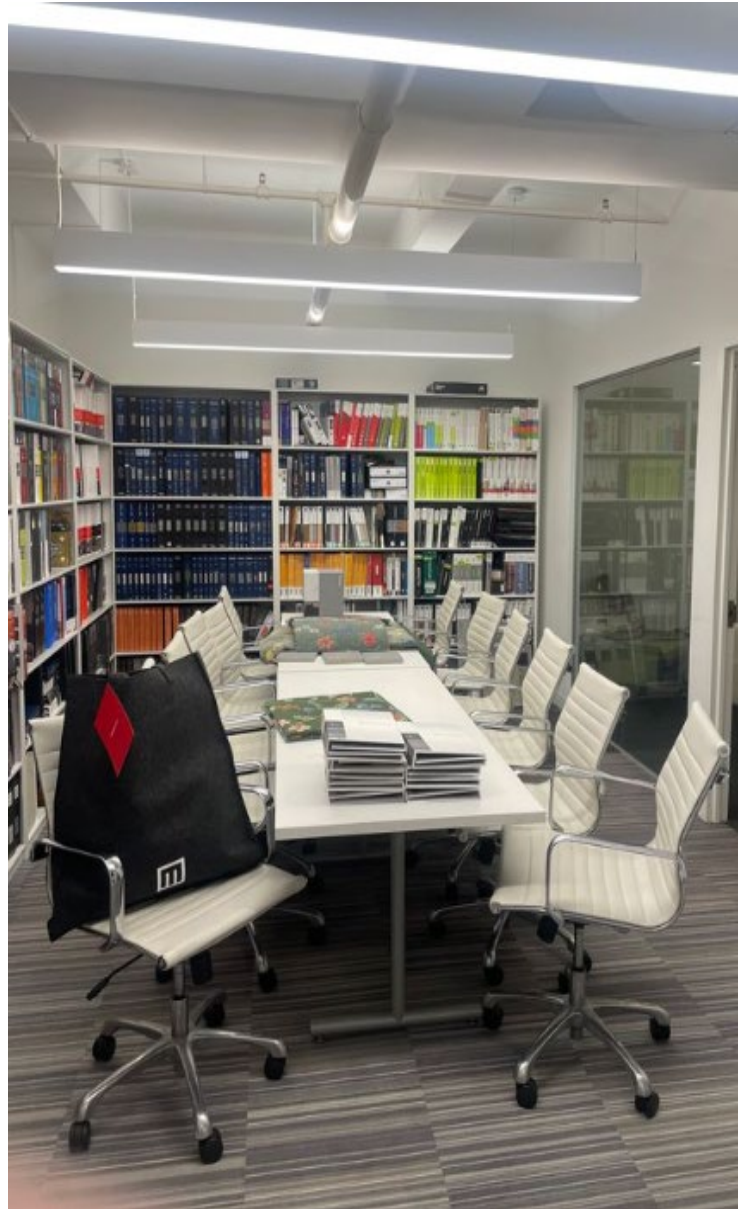
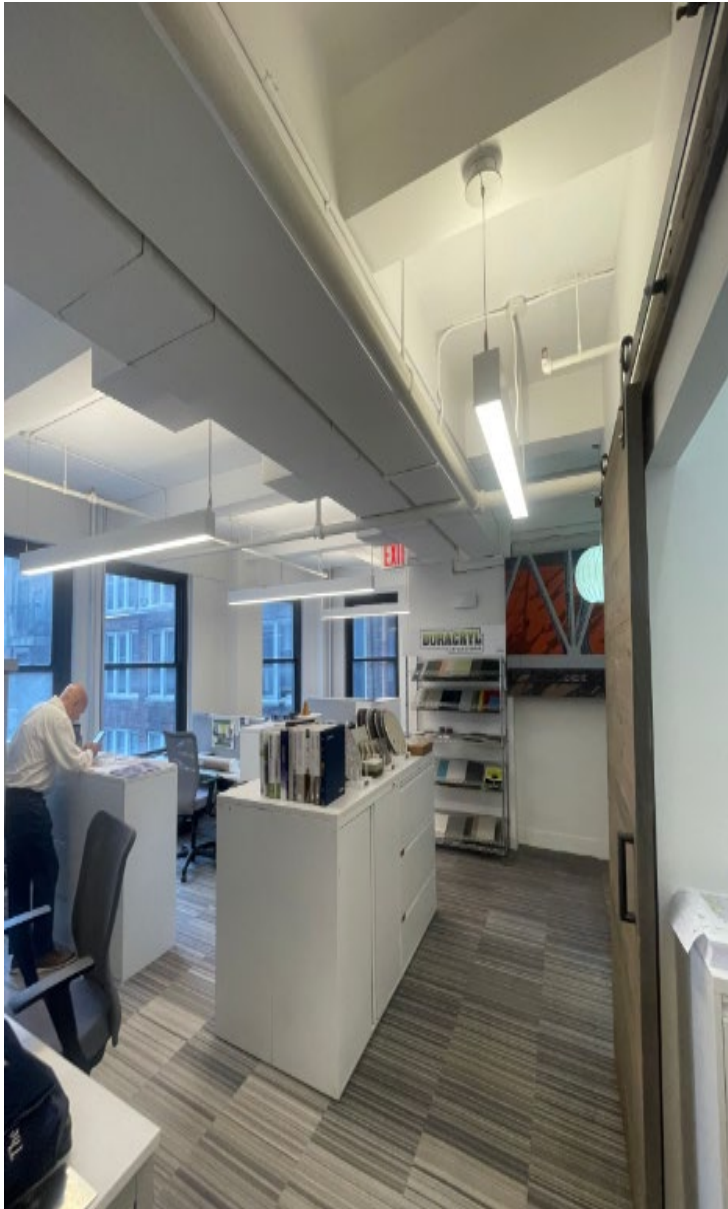
Short-Term Plug-And-Play Sublease

- Built with 1 large conference room with a back breakout room and open area with 6 workstations
- Delivered furnished and wired
- Proximity to Penn Station / Moynihan Train Hall & the 1/2//N/R/ Subway lines

Available Space: 9th Floor: 1,650 RSF
Possession: Immediate
Term: Through January 2026
Asking Rent: Upon Request

350 Seventh Avenue

Partial 9th Floor Photos



350 Seventh Avenue

Partial 9th Floor Photos



350 Seventh Avenue

Partial 9th Floor Photos

