



In the Heart of NoMad
Modern design + Classic elegance

276 FIFTH AVENUE OFFICE/ SHOWROOM

Originally opened in 1892 as the Holland House Hotel, this building was designed by architects George Edward Harding & Gooch boasting 350 rooms of palatial elegance emanating both social and technological ambitions of Gilded Age New York. The Holland House lost its luster in changing economic realities and was converted to commercial use in 1920. The building's limestone facade offers a surviving glimpse into the grandeur that once defined its era on Fifth Avenue. Today the building features office suites small and large accommodating teams from 10 to 50 plus with organic growth potential and onsite property management and services.

BUILDING FEATURES

This 11-story corner office building is located in a prime NoMad location on 5th Avenue and 30th Street, featuring classic, modern & creative office spaces ranging in size from 1500 to 11,000 rsf. 276 5th Avenue boasts a newly updated lobby, a grand staircase throughout, new windows, and has fully furnished and wired spaces ready for immediate occupancy.

Building Highlights:

Abundance of operable windows

Renovated Suites of varying sizes with hardwood flooring, branding opportunity, new pantries; soft seating, conference, huddle and social areas

24/7 access with attended lobby and security

Tenant Controlled A/C; often ductless

Exceptional proximity to public transportation

On site property management office for hands on services

Smart key access and sub-metered electric



SUITE 300 NEWLY BUILT 1,652 RSF



Showroom/Office



Lounge Area



Showroom/Office

EXISTING CONDITIONS FLOOR PLAN

Open Area showroom/office with accent & track lighting flooding the space with light

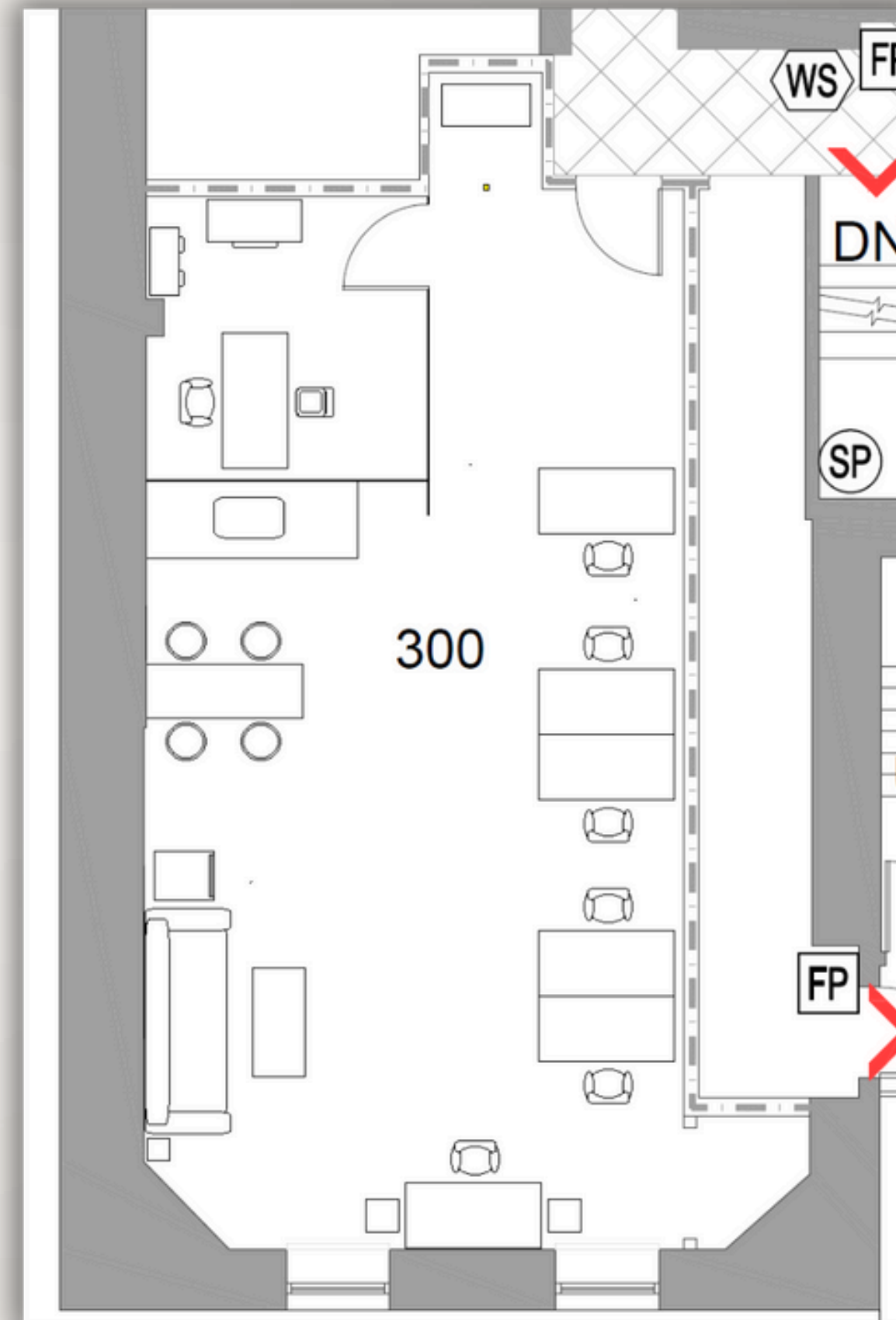
Wet pantry and high top seating

Brand New Prebuilt

Work nook

Flex storage/office

Ductless HVAC/split system under tenant control



SUITE 300 PLUG & PLAY



Entry Area



Open Desk
Area/Showroom



Showroom



Private Office/Storage