



Entire 6th Floor - Existing Conditions

# **215 West 40th Street**

Between 7th & 8th Avenues

Terrific Central Midtown West Location  
Convenient Access to Transportation  
Full and Partial Floor Opportunities



Entire 6th Floor - Existing Conditions

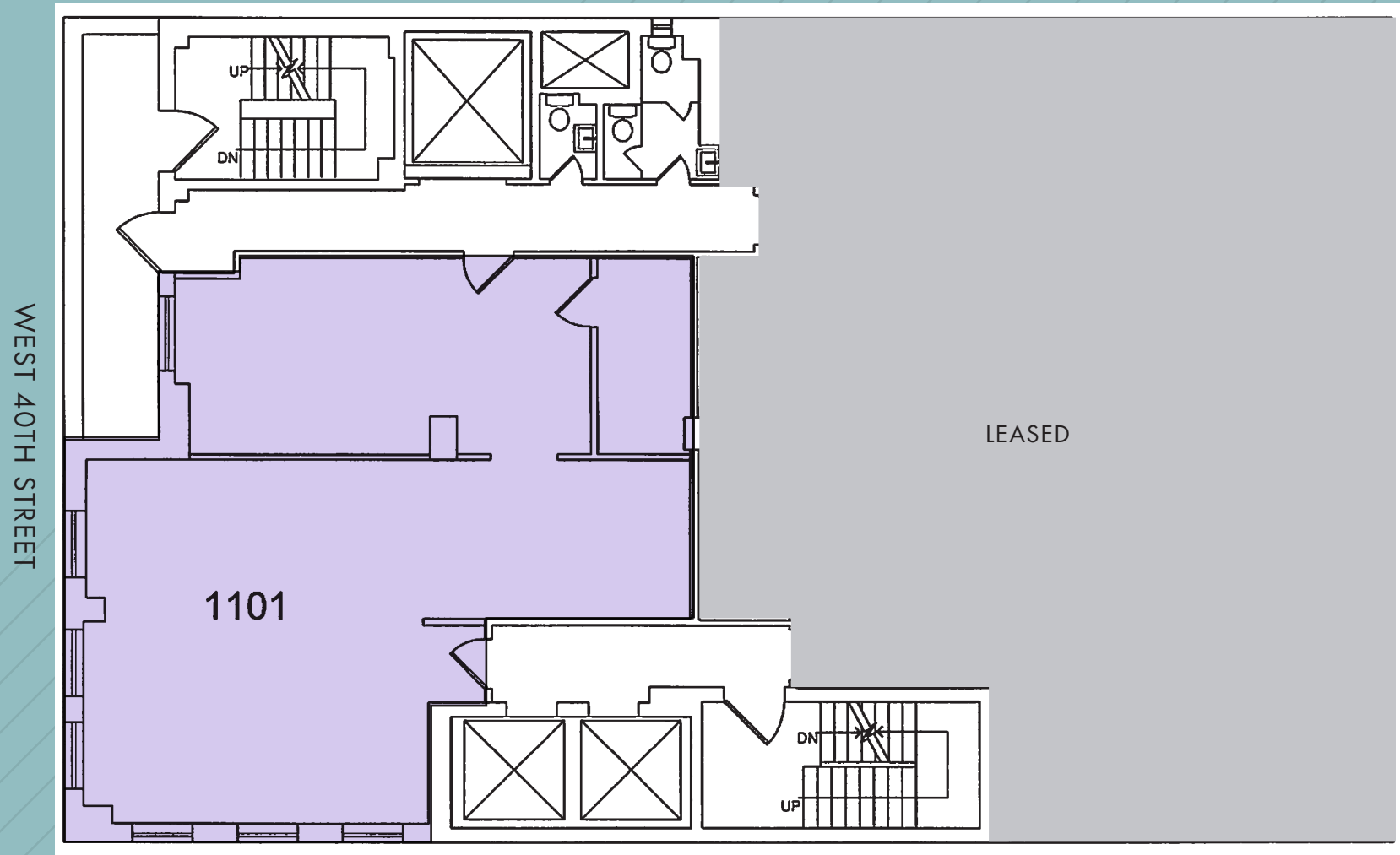
Unit	Size	Possession	Rent
Suite 1101: (Front)	1,676 rsf - South and east exposure provides good natural light	Immediate	Upon Request

**Comments:**

- Short walk to Bryant Park and Times Square;
- Convenient access to Port Authority, Grand Central, Grand Central Madison LIRR concourse, NJ PATH, Penn Station, and Moynihan Train Hall transportation hubs providing fantastic train service
- Tenant controlled A/C, sub-metered electric, 24/7 Access and attended lobby
- (2) Renovated passenger elevators; (1) manned freight elevator

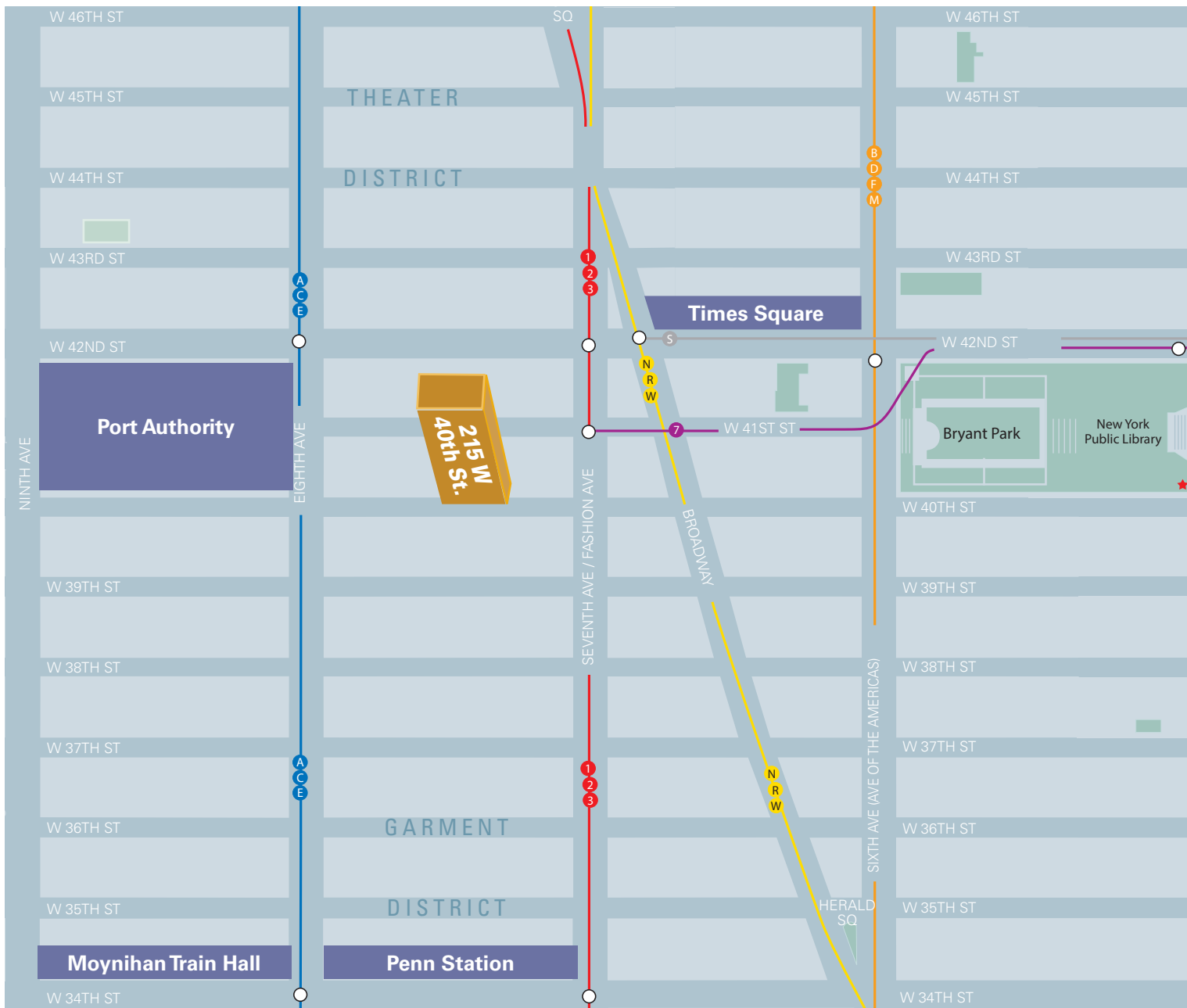


SUITE 1101 (FRONT) - 1,676 RSF  
(EXISTING CONDITIONS)

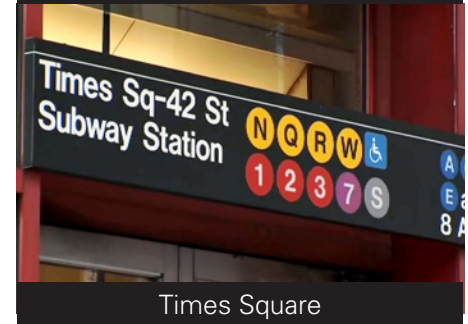


Floor Plan not to scale, for display purposes only





Moynihan Train Hall



Times Square



Bryant Park



Port Authority Bus Terminal