

FOR LEASE

230 7th Avenue

230 7TH AVE
NEW YORK, NY 10011



PROPERTY SUMMARY

Located in the heart of Chelsea, one of New York's most sought-after neighborhoods, 230 7th Avenue offers boutique office spaces ideal for businesses seeking efficient and functional layouts. The building features move-in ready, full-floor suites, including a 1,800 sq. ft. space currently available for lease.

- Hardwood flooring and abundant natural light with 7th Avenue-facing windows.
- Open floor plans with a kitchenette and a private restroom, complete with a shower in each unit. Tenant-controlled heating and air conditioning for added convenience. Please note: This is a walk-up building.

Building SqFt	5,710 SqFt
Year Built	1920
Lot Size (SF)	1,573.00 SqFt
Parcel ID	00773-0043
Zoning Type	Commercial
County	New York



FOR LEASE

230 7th Avenue

230 7TH AVE
NEW YORK, NY 10011

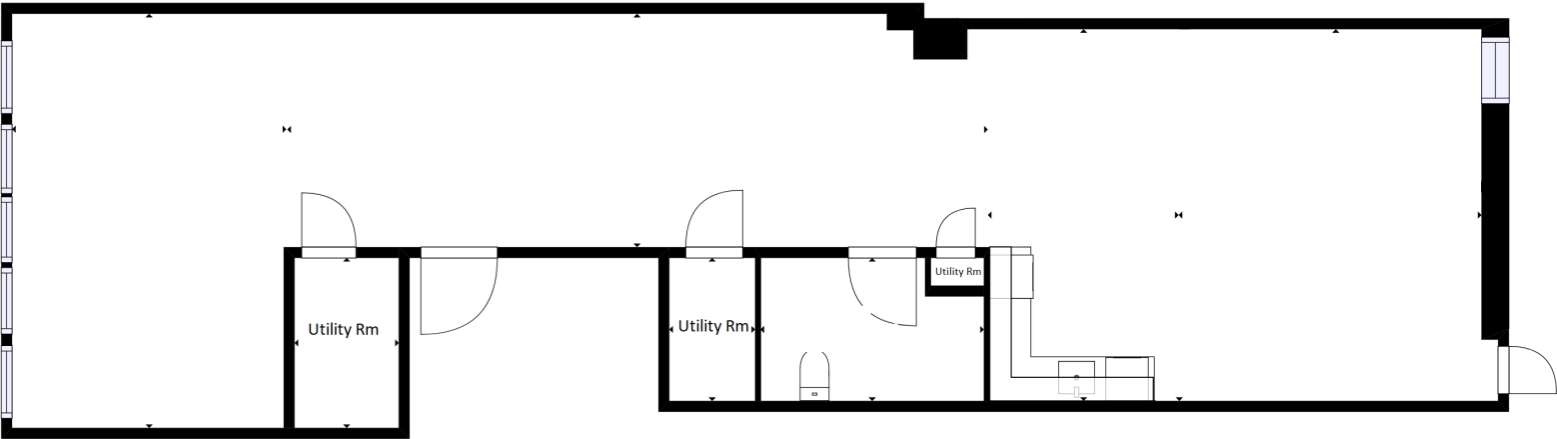
SPACE	SPACE USE	LEASE RATE	LEASE TYPE	SIZE(SF)	TERM
#Floor 2	Office	\$ 40.00 SF/Yr	MG	1,800 SF	Negotiable
#Floor 3	Office	\$ 40.00 SF/Yr	MG	1,800 SF	Negotiable

FOR LEASE

230 7th Avenue

230 7TH AVE
NEW YORK, NY 10011

Floor 2



Floor 3

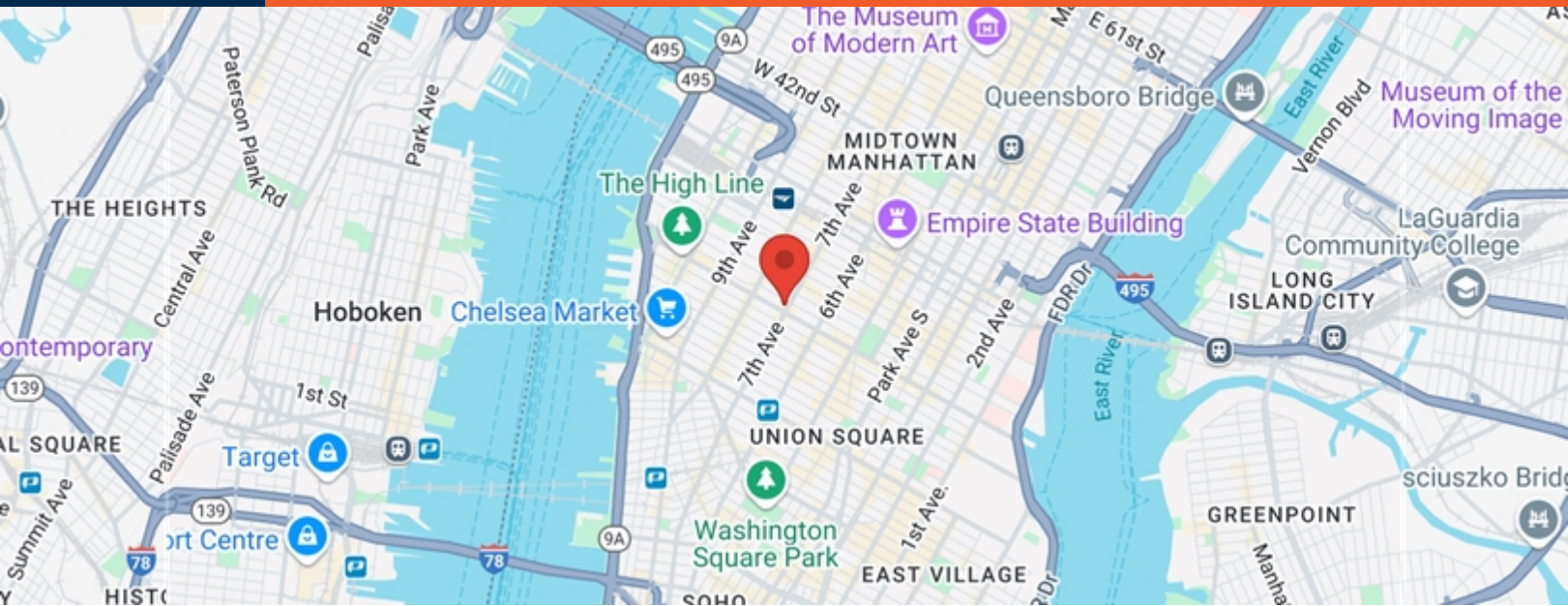


FLOOR 1

FOR LEASE

230 7th Avenue

230 7TH AVE
NEW YORK, NY 10011



POPULATION	1 MILE	3 MILE	5 MILE
2000 Population	174,976	1,007,445	2,300,290
2010 Population	193,789	1,105,911	2,406,795
2024 Population	213,840	1,260,615	2,678,871
2029 Population	212,471	1,269,777	2,708,403
2024-2029 Growth Rate	-0.13 %	0.14 %	0.22 %
2024 Daytime Population	753,653	2,843,227	4,238,556

2024 HOUSEHOLD INCOME	1 MILE	3 MILE	5 MILE
less than \$15000	11,544	67,855	141,810
\$15000-24999	4,278	28,260	64,585
\$25000-34999	3,569	23,968	56,534
\$35000-49999	6,171	35,484	78,199
\$50000-74999	9,212	59,339	135,017
\$75000-99999	10,006	55,455	117,862
\$100000-149999	15,255	86,182	177,193
\$150000-199999	12,207	66,725	128,337
\$200000 or greater	46,427	219,275	353,327
Median HH Income	\$ 146,909	\$ 125,413	\$ 106,750
Average HH Income	\$ 203,734	\$ 187,370	\$ 166,447

HOUSEHOLDS	1 MILE	3 MILE	5 MILE
2000 Total Households	104,226	514,325	1,039,218
2010 Total Households	110,756	560,547	1,101,036
2024 Total Households	118,680	642,572	1,252,960
2029 Total Households	120,617	660,268	1,291,042
2024 Average Household Size	1.64	1.89	2.07
2024 Owner Occupied Housing	34,913	165,628	304,825
2029 Owner Occupied Housing	35,155	168,161	309,889
2024 Renter Occupied Housing	83,767	476,944	948,135
2029 Renter Occupied Housing	85,462	492,107	981,153
2024 Vacant Housing	22,946	106,606	171,057
2024 Total Housing	141,626	749,178	1,424,017