



**252 W 37TH STREET, 11TH FLOOR**

---

Between 7th and 8th Avenues  
Midtown, NYC

## OFFICE SPACE FOR LEASE

### SIZE

10,000 SF

### CEILING HEIGHT

11'

### RENT

\$29 PSF

### TERM

5-10 years

### POSSESSION

Immediate

### POSSESSION

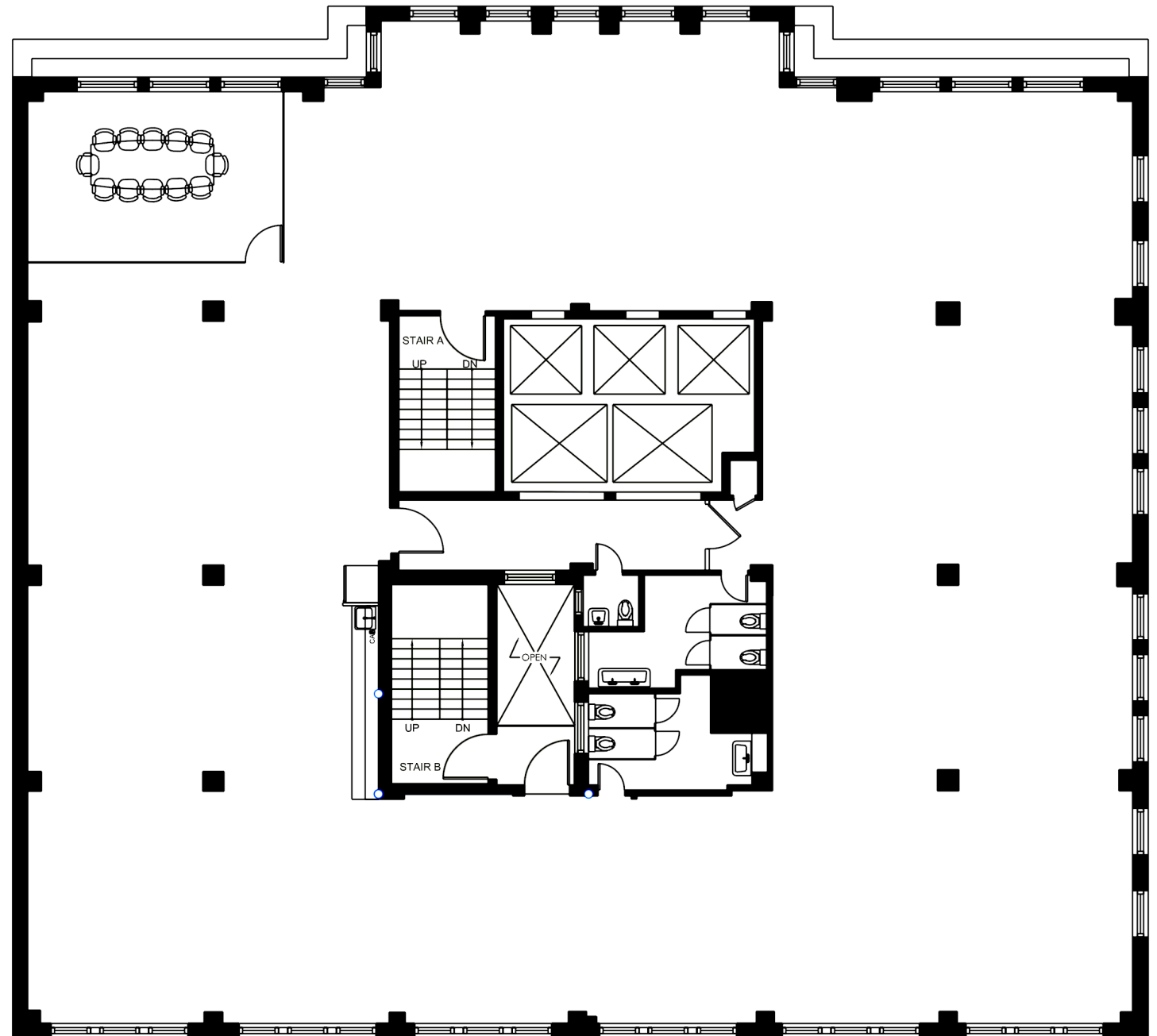
Immediate

### HIGHLIGHTS

- Excellent natural light
- Mostly open layout
- Glass-fronted conference room

### NEIGHBORHOOD TENANTS

Penn Station, Port Authority, Starbucks, Le Cafe Coffee  
Pret A Manger, Chase, Bank of America, TD Bank







---

An attended lobby featuring a modern design and a professional staff, creating a welcoming and sophisticated atmosphere.





---

A bright and inviting space with a mostly open-concept layout.





---

A glass-fronted conference room with a modern aesthetic, accented by polished concrete floors for a sleek, contemporary look.

**Arlo**  
Hotels

CHASE 

★ PRET A MANGER ★

Bank of America 

verizon 



WELLS FARGO 

T-Mobile 



le café coffee 



CHASE 

TD Bank 

---

Located in the lively and energetic heart of Midtown, with immediate access to local hotspots.