

RETAIL SPACE FOR LEASE

# 150

## CENTRAL PARK SOUTH

SOUTH BLOCK OF WEST 59<sup>TH</sup> STREET  
BETWEEN AVENUE OF THE AMERICAS AND SEVENTH AVENUE



# 150 CENTRAL PARK SOUTH

**SOUTH BLOCK OF WEST 59<sup>TH</sup> STREET  
BETWEEN AVENUE OF THE  
AMERICAS AND SEVENTH AVENUE**

## **AVAILABILITY OVERVIEW:**

GROUND FLOOR:	9,974 SF
LOWER LEVEL:	650 SF
TOTAL:	10,624 SF

## **FRONTAGE:**

- APPROXIMATELY 55 FT ON CENTRAL PARK SOUTH

## **POSSESSION:**

- IMMEDIATE

## **TERM:**

- LONG TERM

## **LEASE TYPE:**

- DIRECT

## **ASKING RENT:**

- UPON REQUEST

## **HIGHLIGHTS:**

- Outstanding retail opportunity on Central Park South at the base of an exquisitely maintained and operated cooperative building
- All upscale uses considered – Ideal for personal services, medical and wellness operators
- Approximately 55 feet of frontage directly across from Central Park, spanning a double-door entry and windows on West 59th Street
- Dedicated signage awning with three sides of visibility

## **CURRENT CONFIGURATION:**

The offering is currently built as a high-end spa and wellness facility with recently renovated infrastructure. The existing configuration contains the following:

- Welcome area and lobby
- Upscale men's and women's locker room wings with showers, restrooms and changing areas
- Two expansive fitness studios
- Private treatment rooms with dedicated waiting area
- Storage and laundry facilities

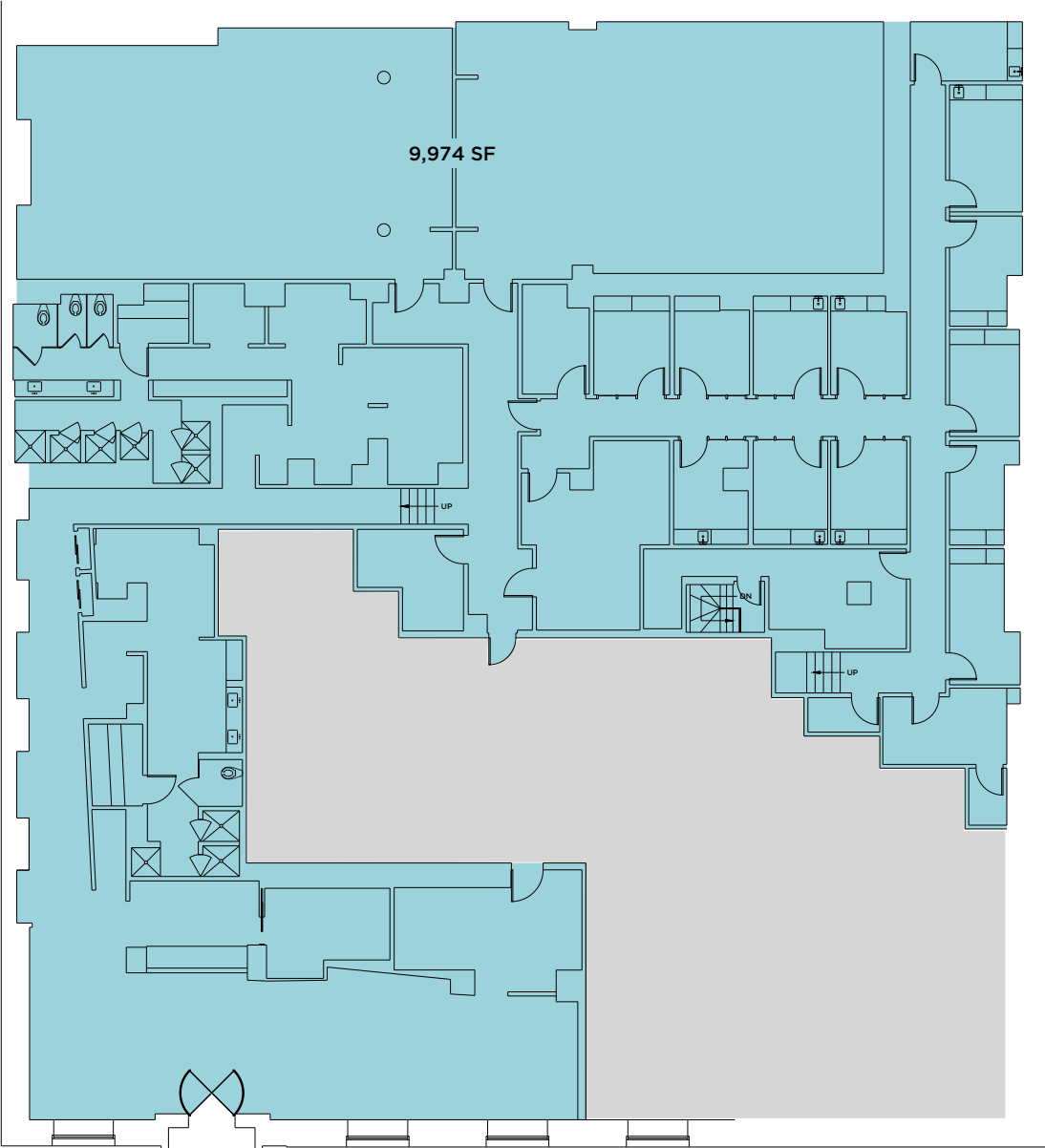


**SIGNAGE**

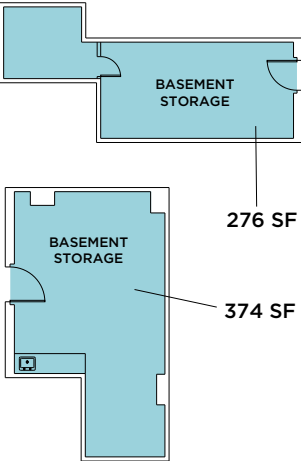
# 150 CENTRAL PARK SOUTH

## GROUND FLOOR

EXISTING CONFIGURATION



WEST 59TH ST.



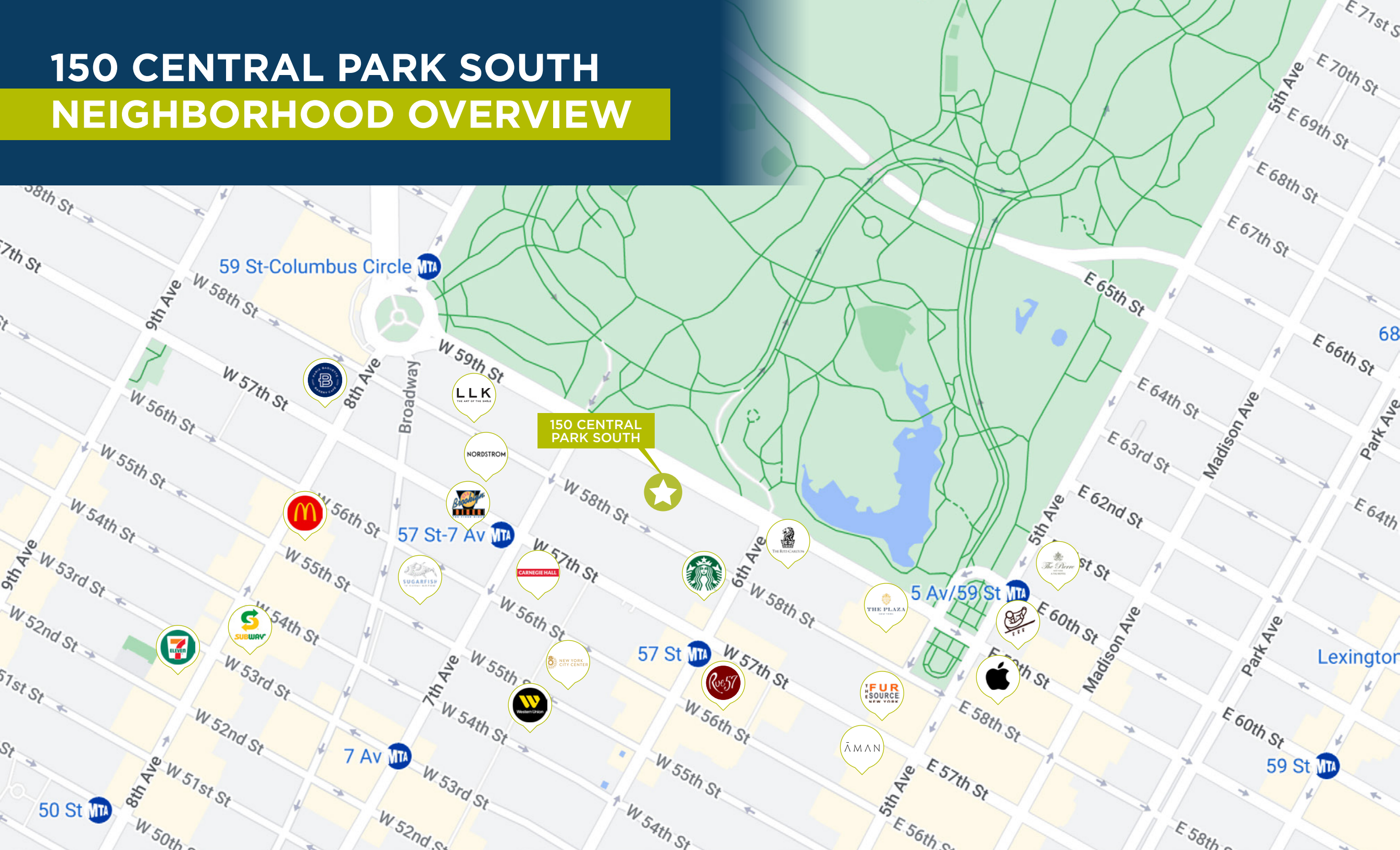


# EXISTING INTERIOR CONDITION





# 150 CENTRAL PARK SOUTH NEIGHBORHOOD OVERVIEW



**150**  
**CENTRAL PARK SOUTH**

**SOUTH BLOCK OF WEST 59<sup>TH</sup> STREET**  
**BETWEEN AVENUE OF THE AMERICAS AND SEVENTH AVENUE**

**SIGNAGE**

