



For **sublease**

Sleek move-in-ready space overlooking Madison Square Park

11 E. 26th St. New York, NY 10010

SPACE PROFILE

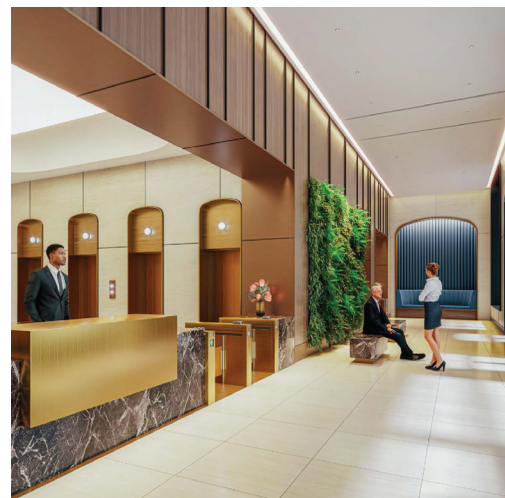
Entire 14th
Floor

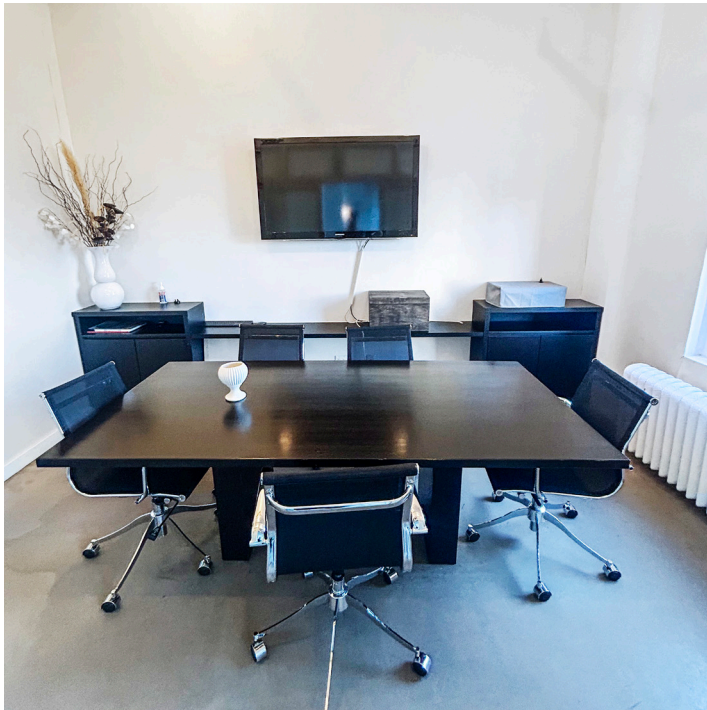
Immediate
Availability

12,083 RSF
Total SF

November 2027
Term

Negotiable
Rental rate

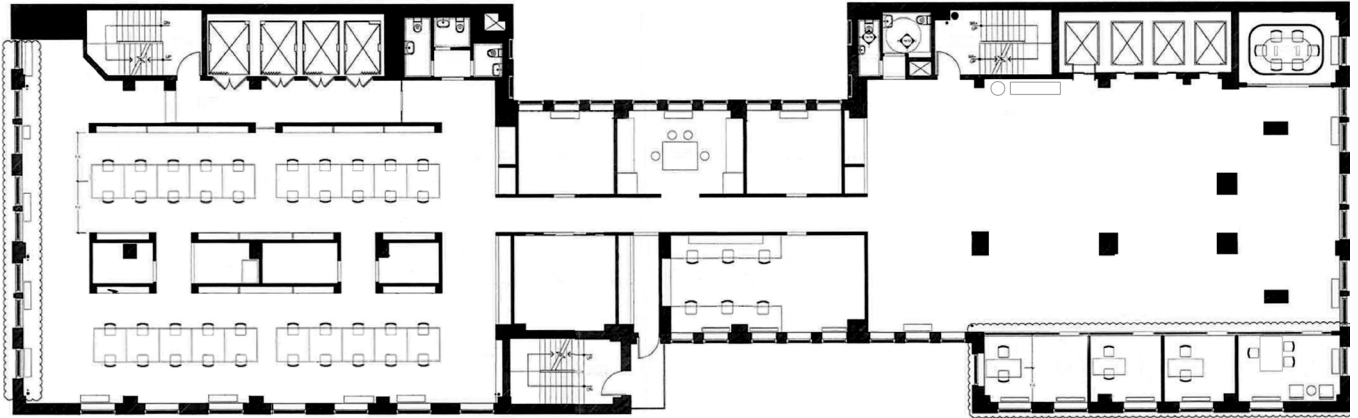




KEY HIGHLIGHTS

- Ability to open up floor on south side
- Steps from Madison Square Park
- Modern built space delivered fully furnished

Potential Floorplan

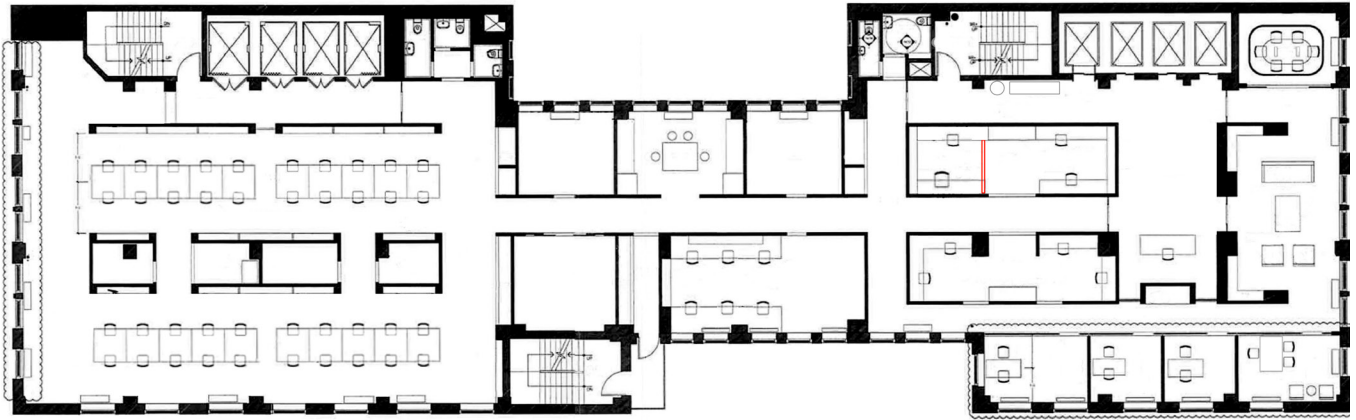


14TH FLOOR

12,083 SF Total Available



As-is Floorplan



14TH FLOOR

12,083 SF Total Available



