



East 26th

A

BUILDING FEATURES

- *Full floor opportunities of ~ 31,500 RSF available*
- *Continuous block of ~125,500 RSF available*
- *Full tower floor opportunities ~12,100 RSF available*
- *2nd floor amenity club inclusive of a fitness center, locker rooms, a whiskey hall, and a private lounge overlooking Madison Square Park.*
- *A brand-new rooftop deck inclusive of a conference pavilion for tenants use featuring panoramic views from the Chrysler Building to Flatiron.*
- *Backup power for tenants' mission critical IT functions.*
- *Landlord will deliver space demolished and white-boxed with brand-new bathrooms, HVAC, and a generous work allowance.*



BUILDING
FEATURES



PRIVATE TENANT LOUNGE
with fireplace, bar, and treetop views

BUILDING FEATURES



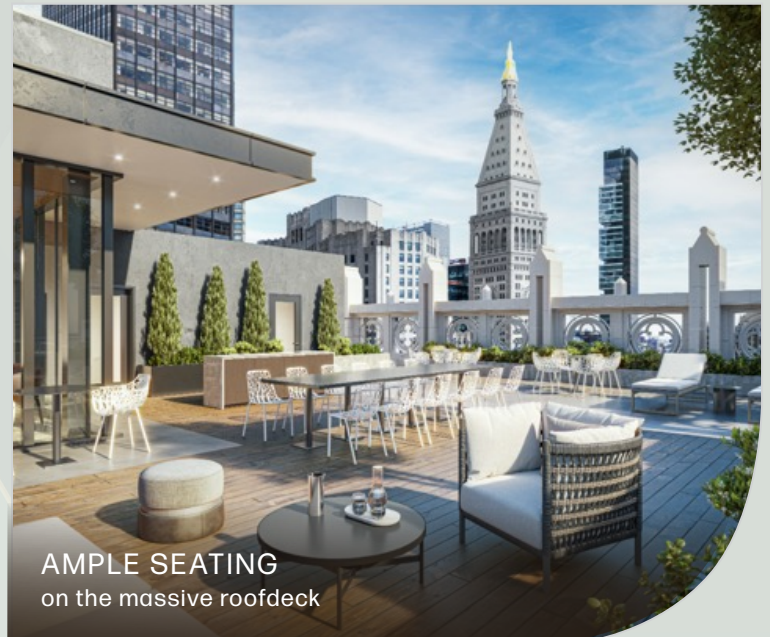
BUILDING FEATURES



PENTHOUSE CONFERENCE &
ENTERTAINMENT PAVILION
with floor-to-ceiling NanaWall glass
for indoor-outdoor flexibility



360° VIEWS
of Manhattan's most iconic landmarks



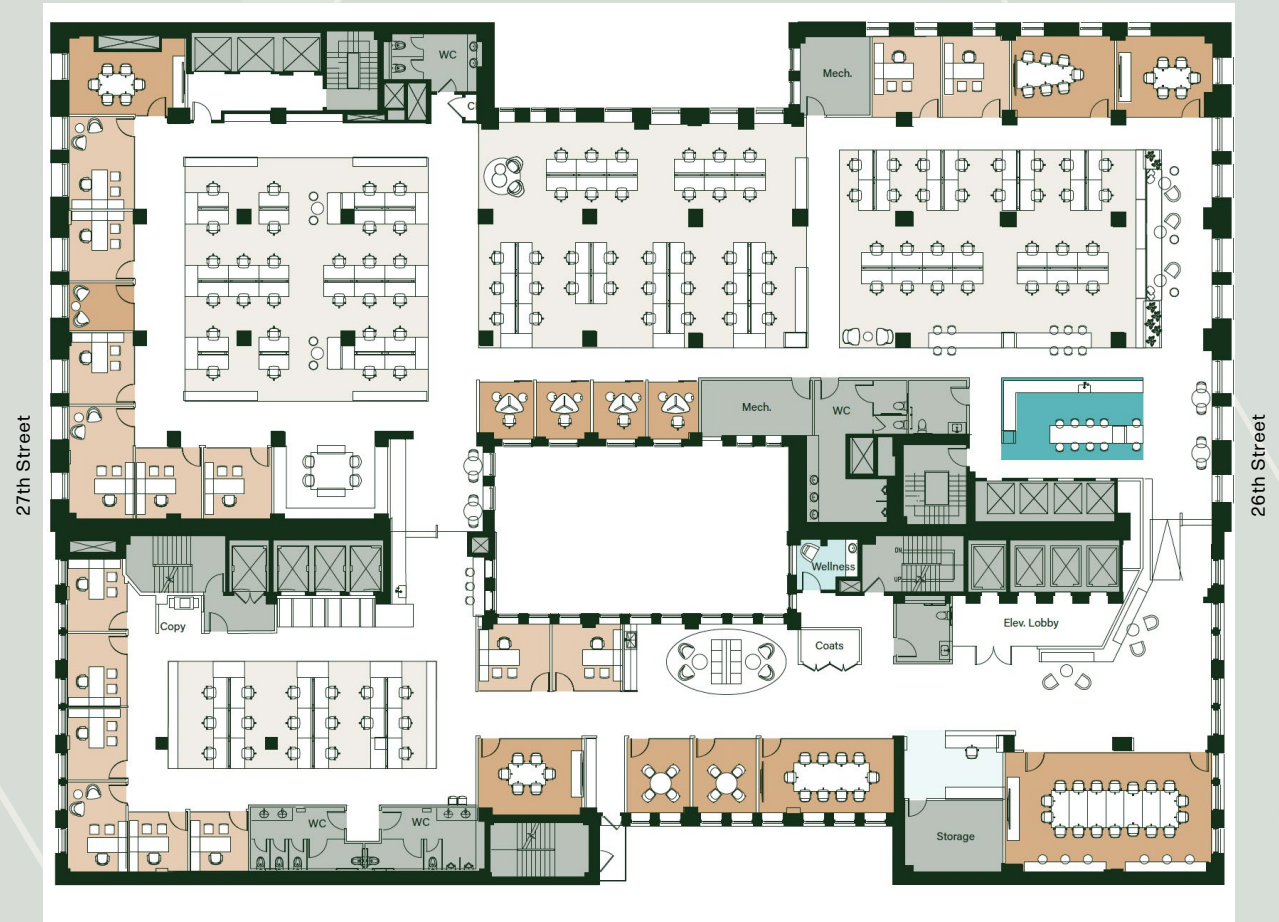
AMPLE SEATING
on the massive rooftop deck

TYPICAL COMBINED FLOOR TEST FIT

~31,500 RSF

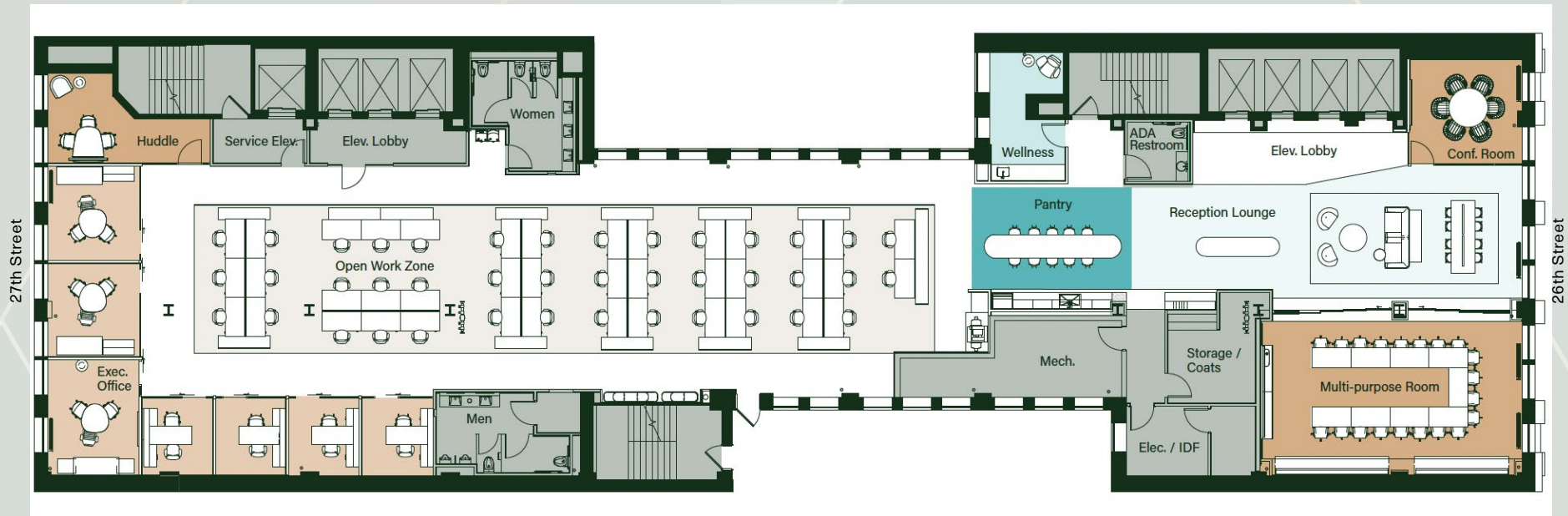
SPACE TYPE	COUNT
Private Office	13
Executive Office	3
Open Workstations	109
Reception	1
Total Workseats	126

Conf. Rm (10-18 seats)	2
Conf. Rm (4-7 seats)	6
Huddle Room (3-6 seats)	5



PRE-BUILTS
WEST BUILDING

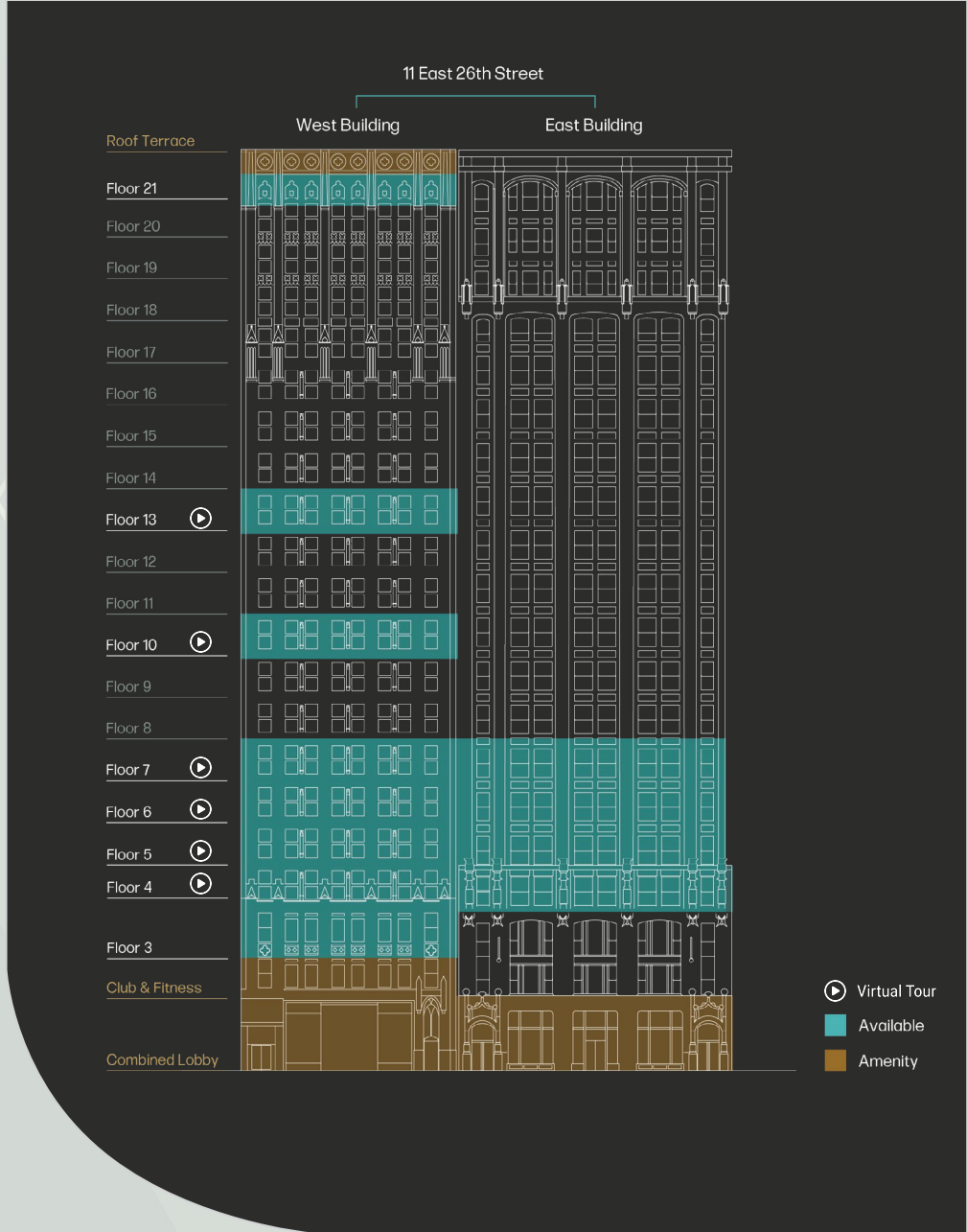
~12,100 RSF



SPACE TYPE	COUNT
Private Office	7
Open Workstations	41
Total Workseats	48

Large Conf. Rm (10+ seats)	1
Small Conf. Rm (4-6 seats)	1
Huddle Room	1
Open Collaborative	6
Reception	1
Wellness Room	1
Copy / Print	1
IT	1
Restrooms	3

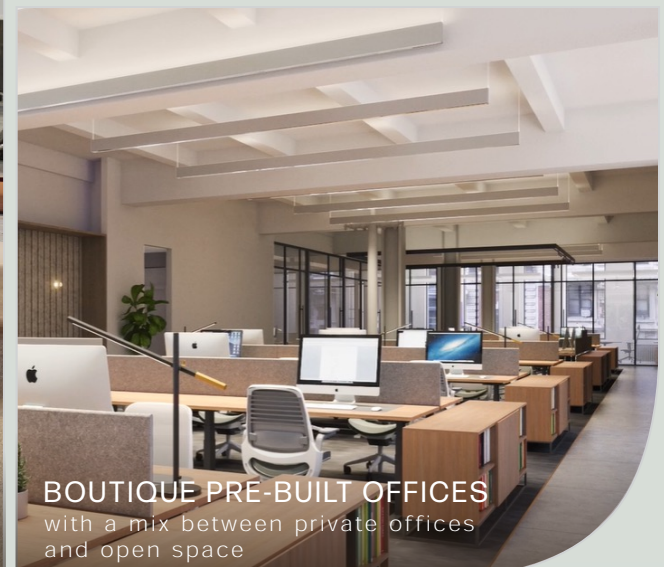
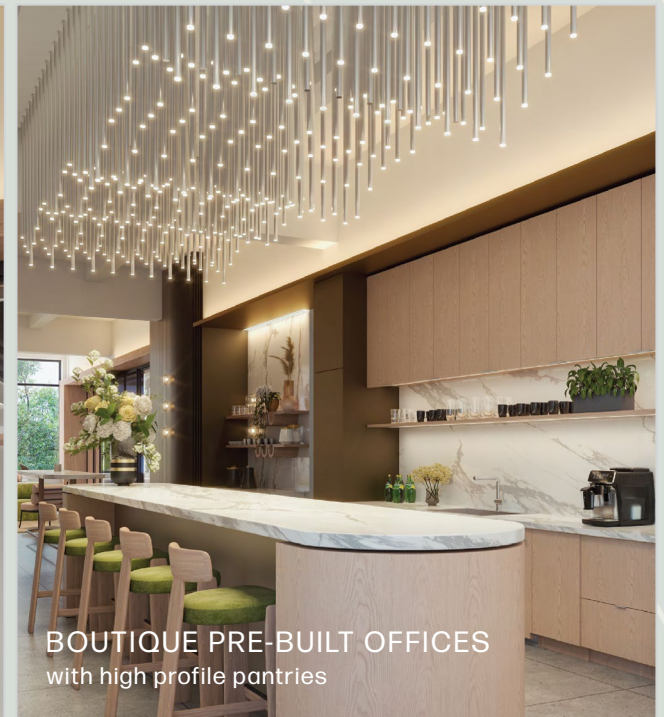
11 EAST 26TH STREET AVAILABILITY



11 EAST 26TH	AVAILABILITY	RSF
E13	Q1 2024	12,116
E10	High End Pre-Built – Spring 2024	12,103



PRE-BUILT FINISHES





East 26th

AT MADISON SQUARE PARK