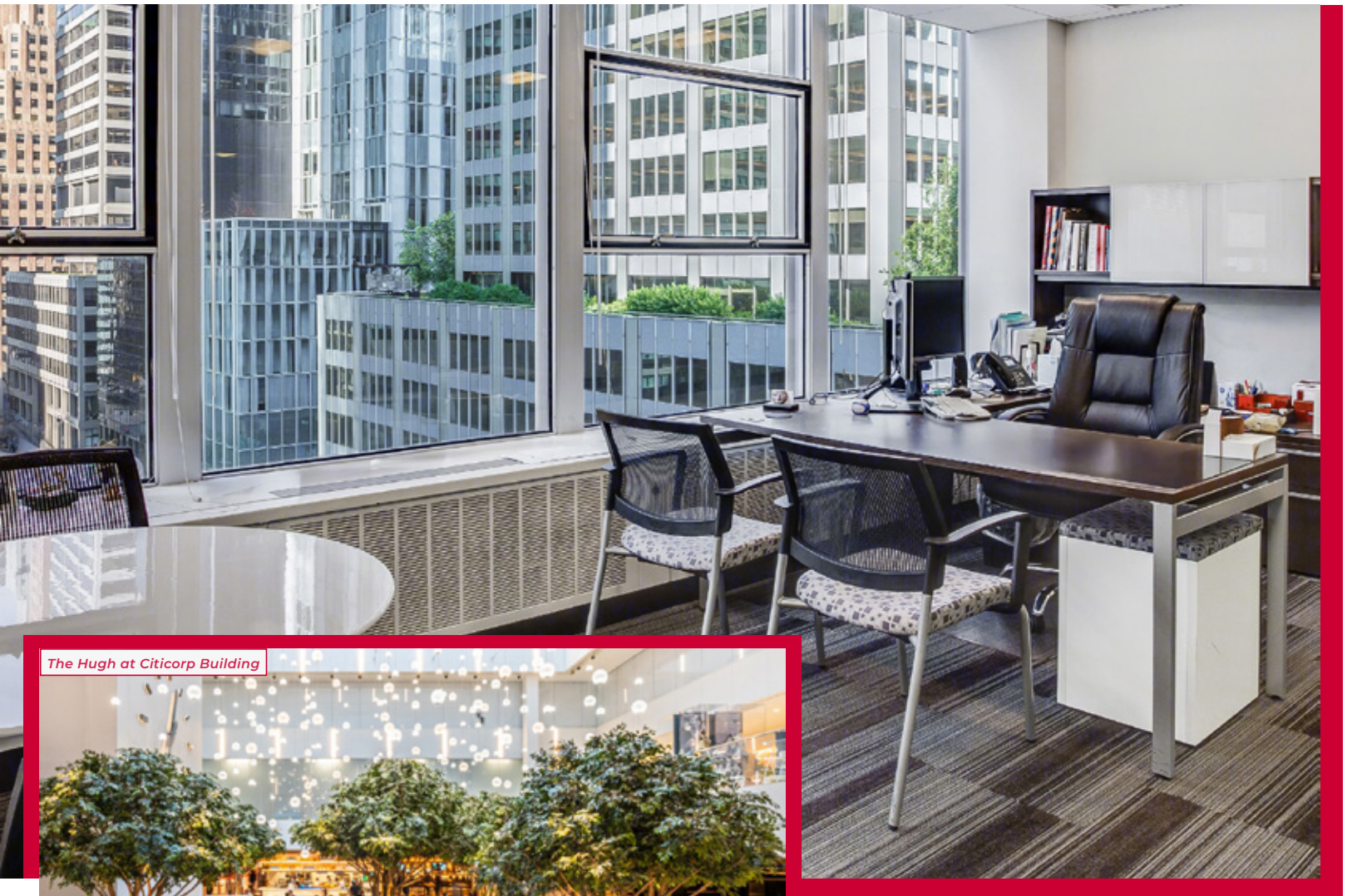


SUBLEASE TO NOVEMBER 2029

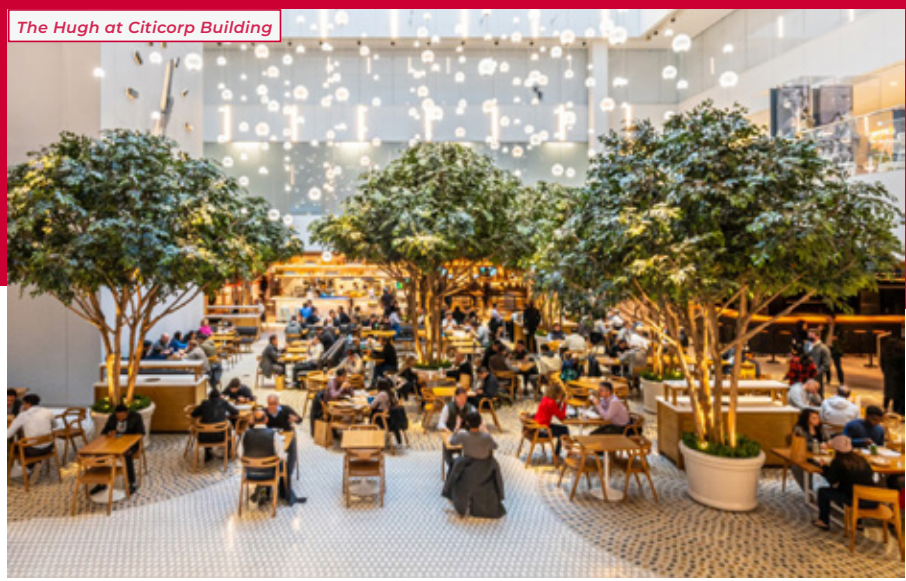
641

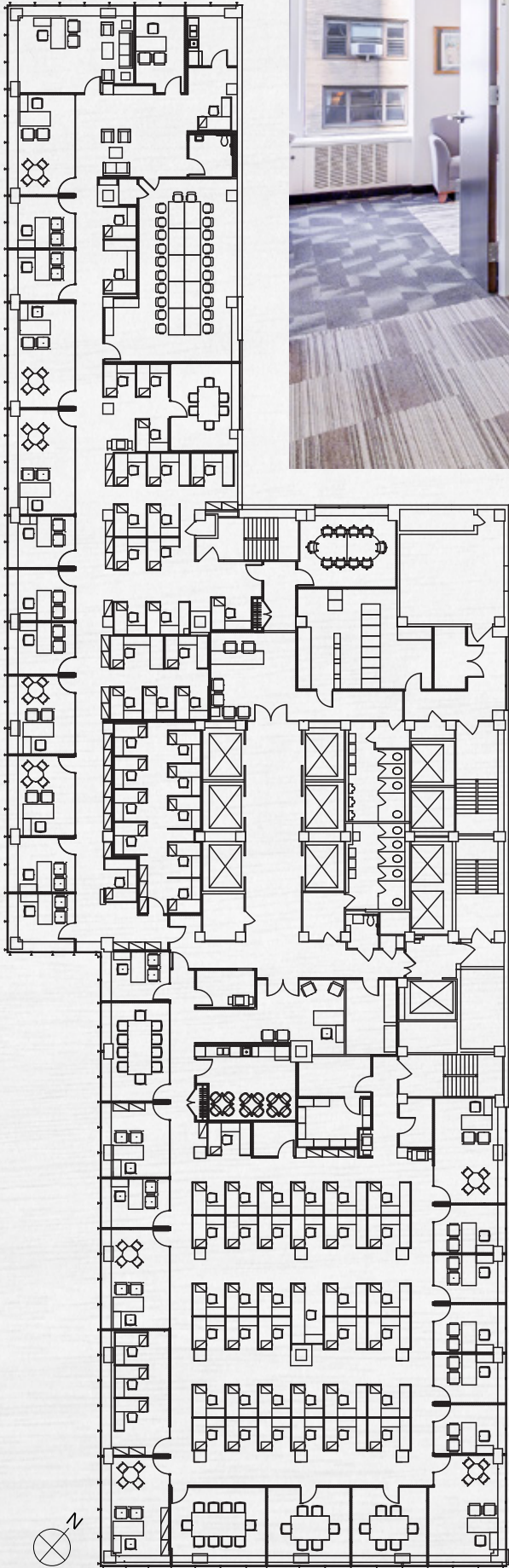
LEXINGTON AVENUE

ENTIRE 9TH FLOOR – **25,682 RSF**



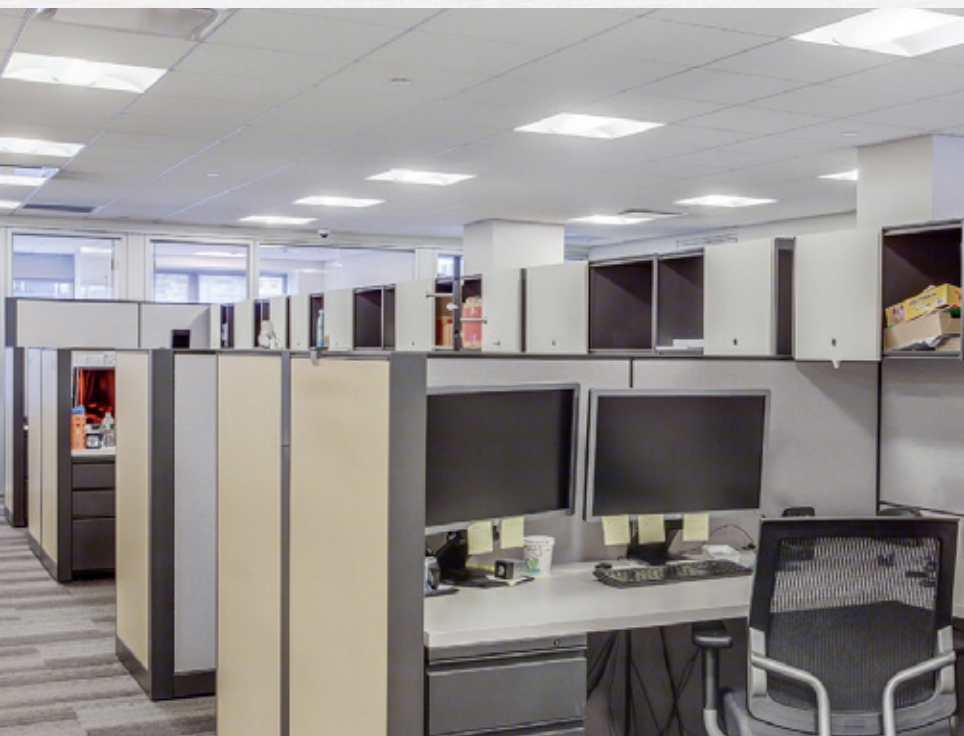
The Hugh at Citicorp Building

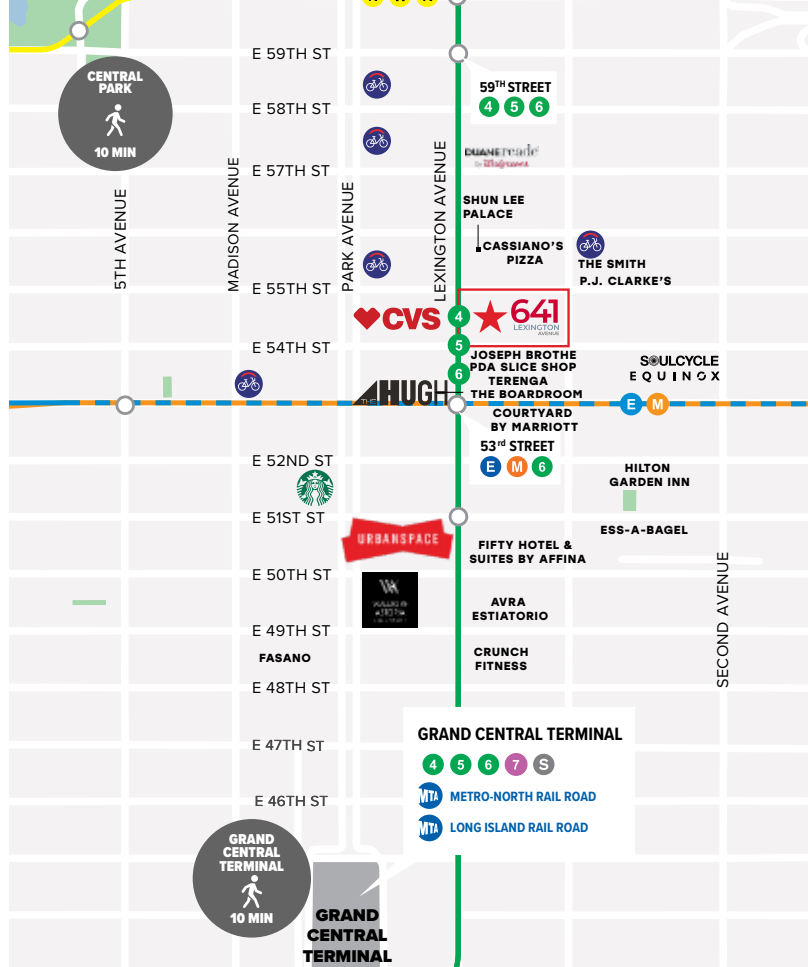




FULL FLOOR | 25,682 RSF

- *Delivered Fully Furnished*
- *10 Executive Offices*
- *16 Private Offices*
- *1, 9 person Team Room*
- *1, 20-24 person Board Room*
- *4, 10-12 person Conference Rooms*
- *Open Area for 60 people*
- *2, 6-10 person Conference Rooms*
- *Eat-in Pantry and an Executive Pantry*
- *IT Room*
- *Reception Area*
- *Mail and Storage Rooms*
- *Connectivity*
 - *CAT 6A cabling*
 - *Verizon Business, Cogent, Light Tower, Spectrum (Mastery) and Comcast Video*
- *Sublease term thru Nov, 2029*





BUILDING / AREA HIGHLIGHTS

- *Messenger center*
- *WiredScore Certified Platinum*
- *Nantum operating system*
- *24/7/365 access*
- *Attended Lobby*
- *Key card turnstile access*
- *Major transportation hub, trains nearby: 4 5 6 E F M N R W*
- *The Hugh featuring dine-in, take-out, catering and private events located directly across the street*
- *Urbanspace, another restaurant food hall is located three blocks away*
- *Divisible to 12,153 RSF*