

500 FIFTH

BRYANT PARK

BUILT TO IMPRESS AT **BRYANT PARK**
PARTIAL FLOOR **12,400 SF AVAILABLE**





PROPERTY HIGHLIGHTS

- Located on Bryant Park with unobstructed New York Library, Park and skyline views
- Steps from Grand Central Terminal which provides immediate access to Long Island Rail Road, Metro North Railroad, Amtrak and multiple subways :



Long Island Rail Road



Metro-North Railroad



- Close proximity to Penn Station, Port Authority and additional subways :



Long Island Rail Road

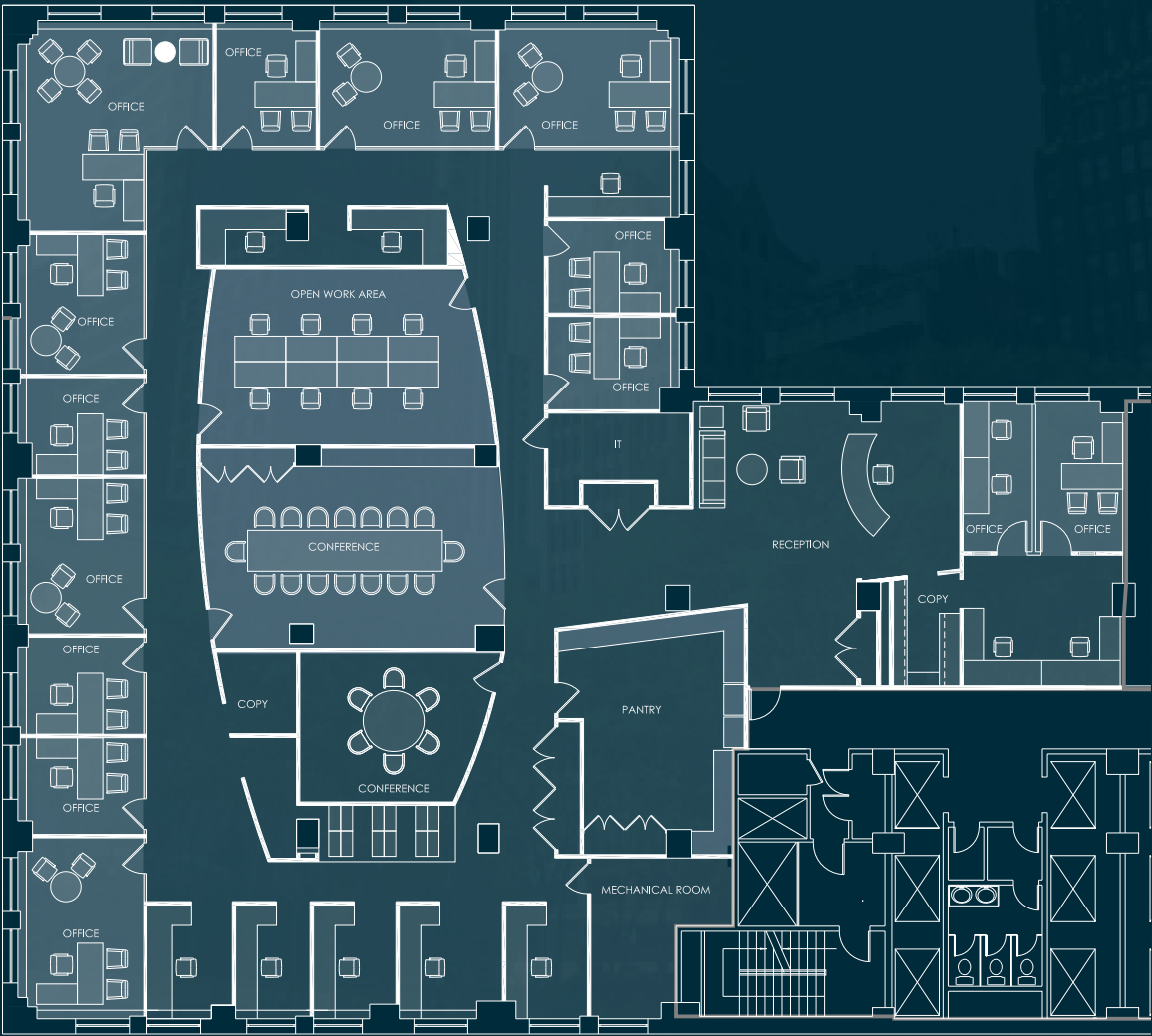


TRANSIT



SUITE 1440 - 12,400 SF - AS BUILT

OFFICES	12	WORKSTATIONS	10	PANTRY	1
BENCHING	8	TOTAL HEADCOUNT	31	IT CLOSET	1
RECEPTION	1	CONFERENCE ROOMS	2		



SUITE 1440 - 12,400 SF - TESTFIT

OFFICES	12	WORKSTATIONS	6	PANTRY	1
BENCHING	47	TOTAL HEADCOUNT	66	COAT CLOSET	1
RECEPTION	1	CONFERENCE ROOM	1	IT CLOSET	1

