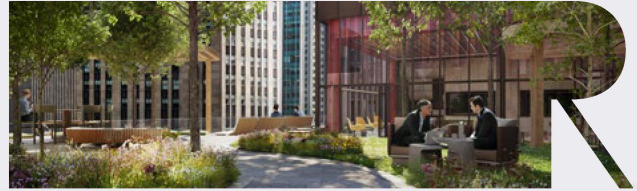


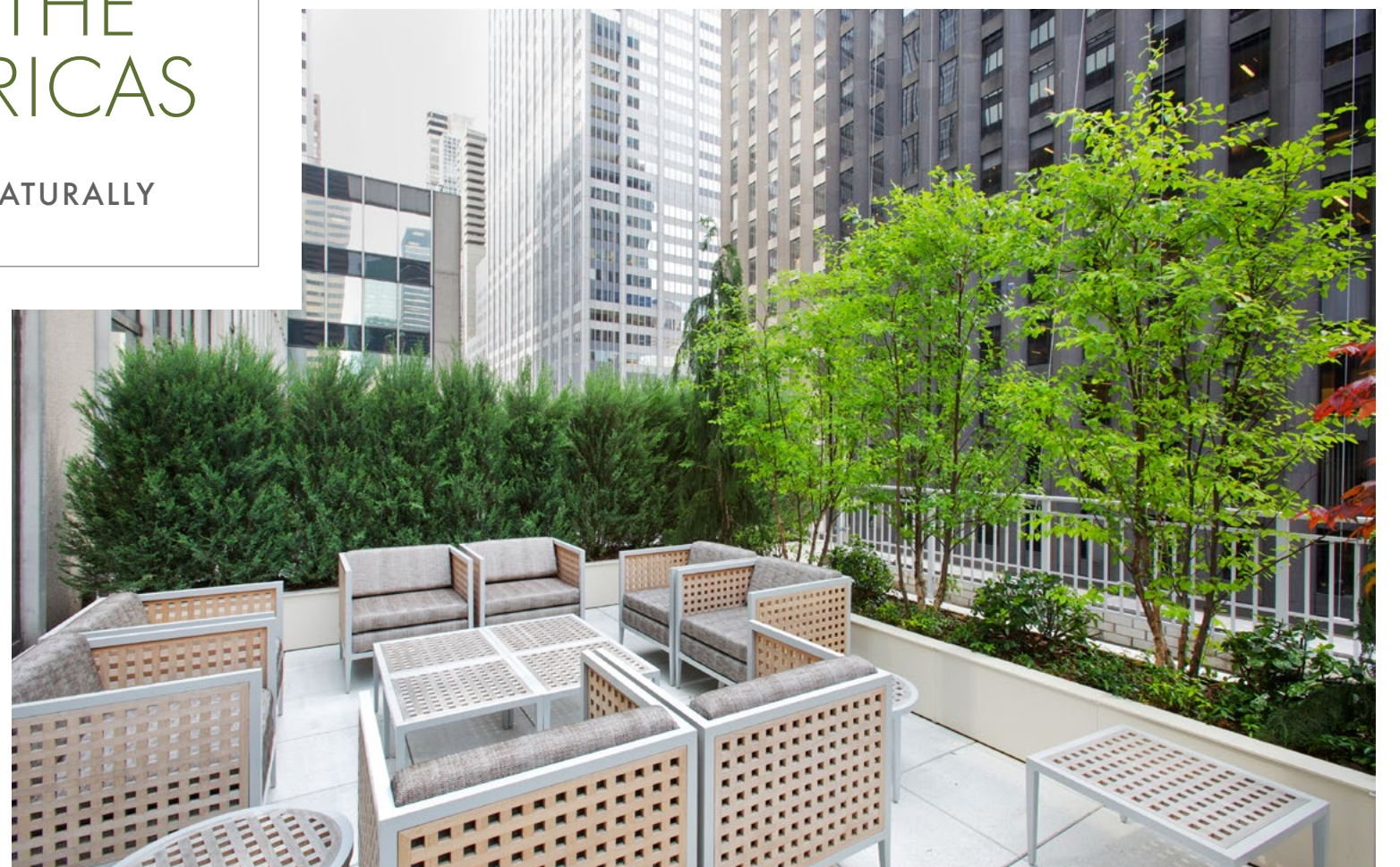
1290  
AVENUE  
OF  
AMERICAS





# 1290 AVENUE OF THE AMERICAS

WORK, NATURALLY







# IN THE MIDDLE OF IT ALL

St. Patrick's Cathedral

Rockefeller Center

Times Square

MoMA

Carnegie Hall

New York City Center

Saks Fifth Avenue

Tiffany & Co.

Bergdorf Goodman

Ritz Carlton

Hilton Hotel

Fifth Avenue

Plaza Hotel

Baccarat Hotel



# AS CENTRAL GETS

**5 MIN WALK**

Every major subway line in Midtown

**7 MIN WALK**

Grand Central Station & LIRR East Side access

**35 MIN DRIVE**

LaGuardia International Airport

**50 MIN DRIVE**

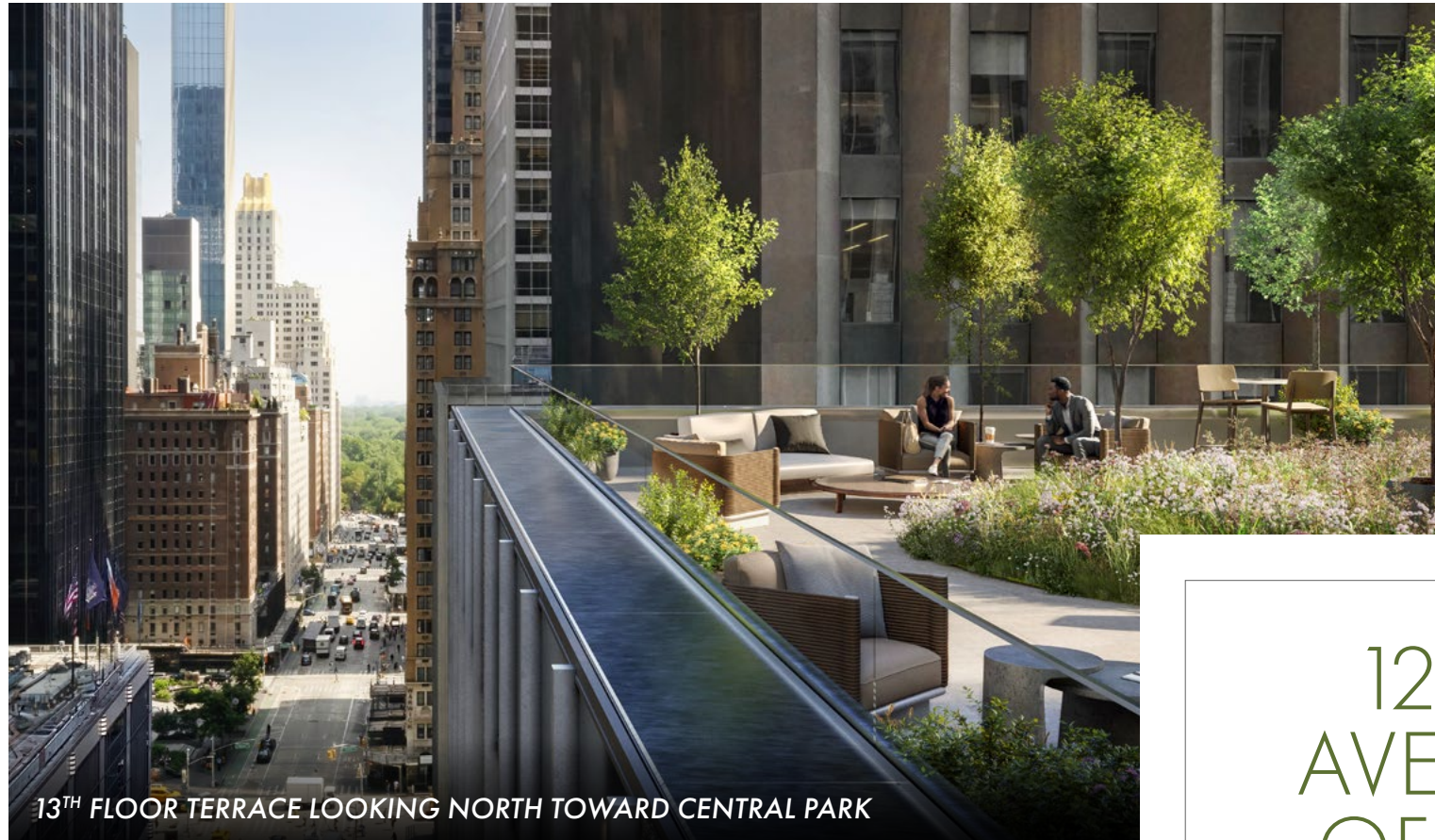
John F. Kennedy & Newark Liberty Int. Airports



# CLASSIC NEW YORK VIEWS



From nearly everywhere in the building, the views of Manhattan and the surrounding area are spectacular.



13<sup>TH</sup> FLOOR TERRACE LOOKING NORTH TOWARD CENTRAL PARK



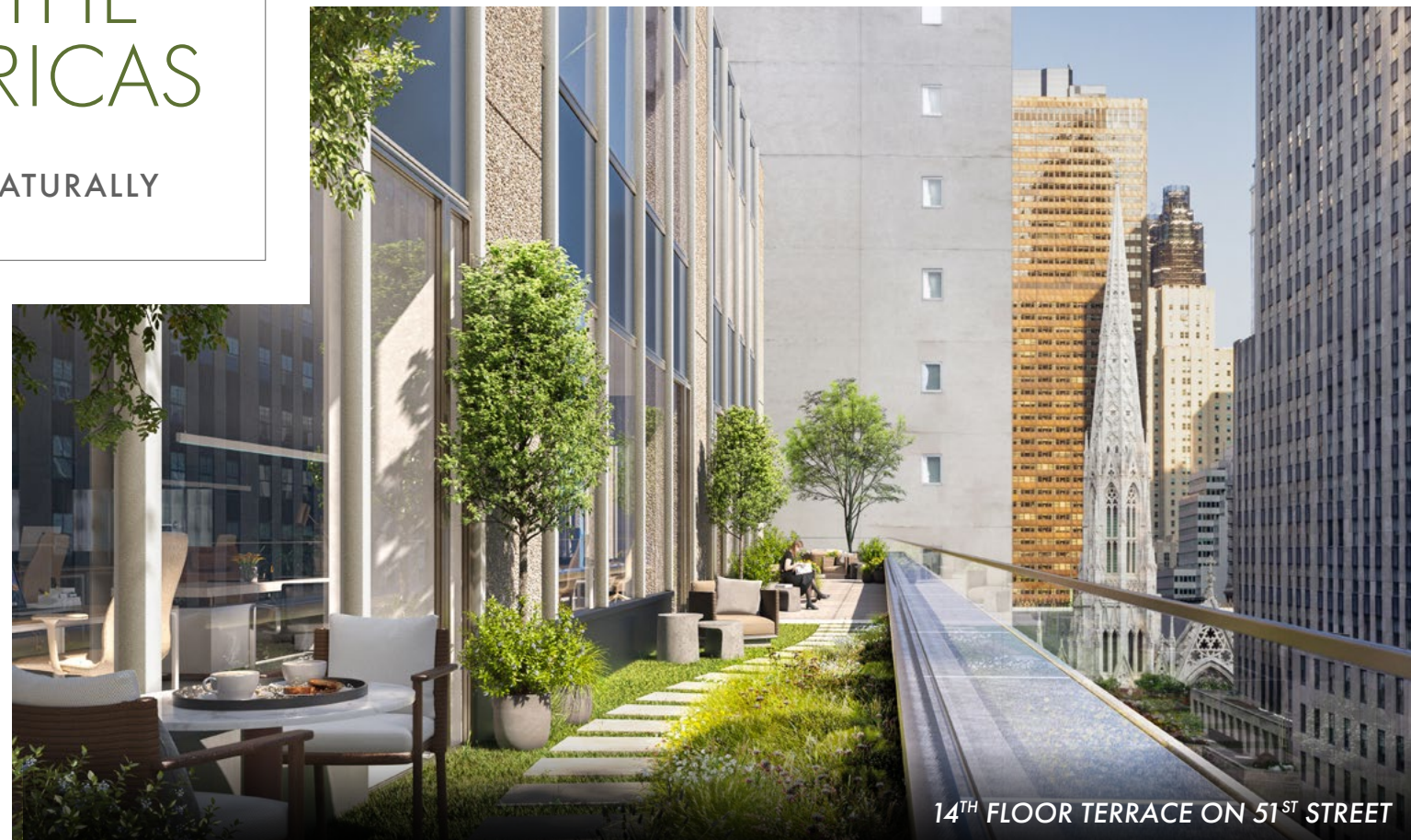
13<sup>TH</sup> FLOOR TERRACE LOOKING SOUTH

# 1290 AVENUE OF THE AMERICAS

WORK, NATURALLY



14<sup>TH</sup> FLOOR TERRACE LOOKING WEST TOWARD SIXTH AVENUE



14<sup>TH</sup> FLOOR TERRACE ON 51<sup>ST</sup> STREET



12<sup>TH</sup>, 13<sup>TH</sup>, 14<sup>TH</sup>, 17<sup>TH</sup> & 19<sup>TH</sup> FLOOR TERRACES





PENN 1, THE LANDING

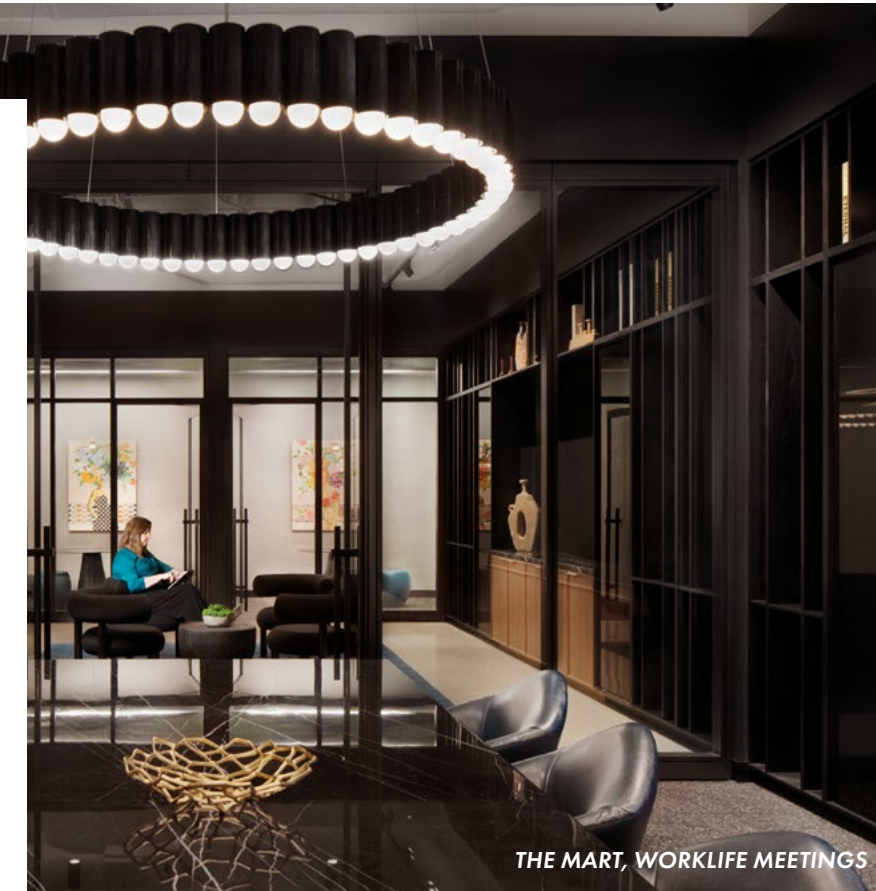
# 1290 AVENUE OF THE AMERICAS

An amenity ecosystem for tenants to focus on both work and self-care. The WorkLife amenities are available to all office tenants, including:

- TOWN HALL & PAVILION
- TENANT LOUNGE
- FITNESS AREA & BIKE ROOM



WorkLife: Solving For Your Day.



THE MART, WORKLIFE MEETINGS

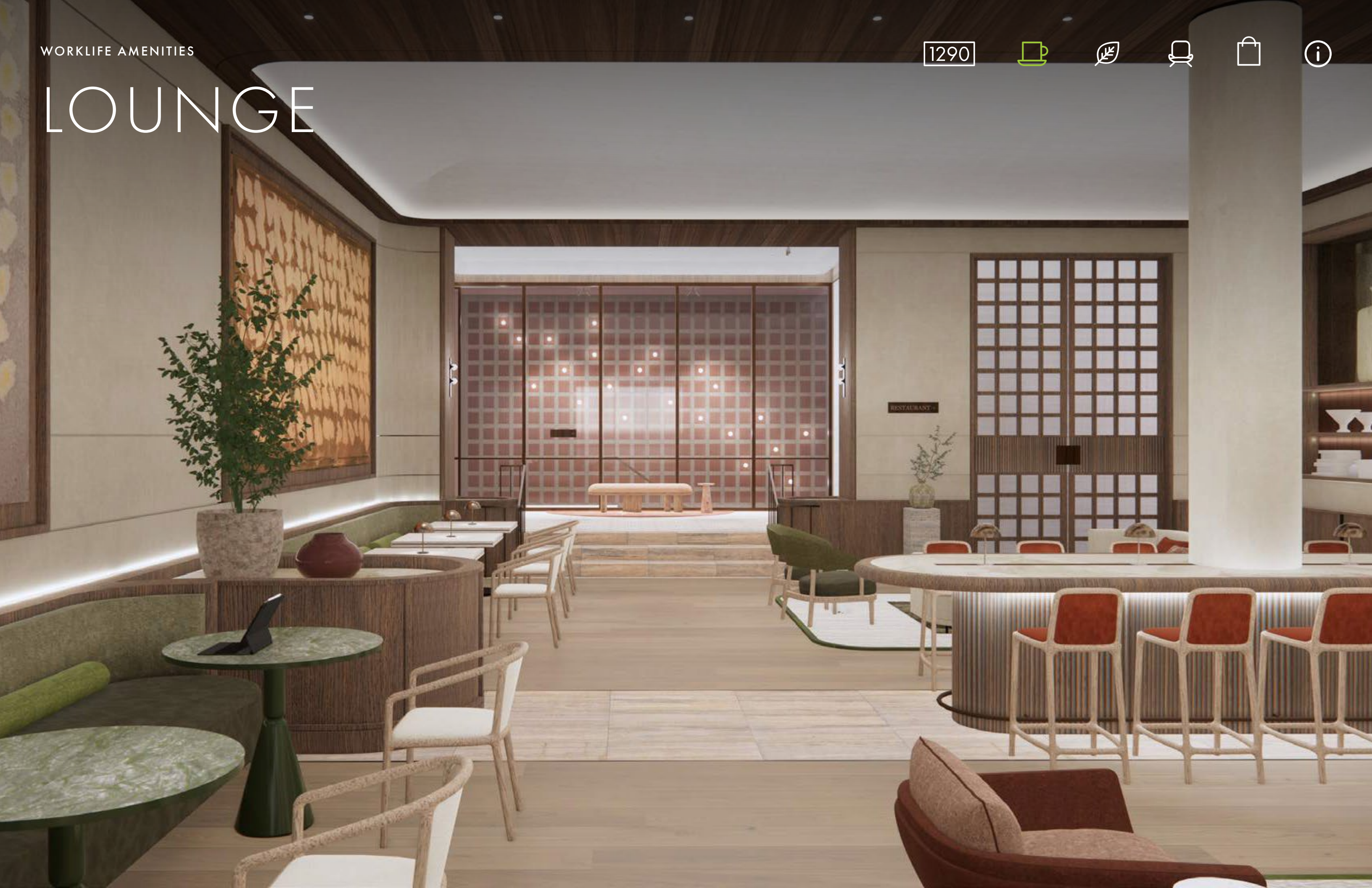


555 CALIFORNIA AUDITORIUM



PENN 1, LIFE TIME FITNESS

# LOUNGE



WORKLIFE AMENITIES

# LOCKER ROOM



1290



# OPEN FITNESS FLOOR



17TH FLOOR PAVILION

# A FIRST- OF-A-KIND AMENITY

On the 17<sup>th</sup> floor, the sprawling 10,000-square-foot landscaped terrace and 15,000 square-foot pavilion form an indoor-outdoor complex of meeting rooms, bars, lounges, and town hall that are open to all tenants for both daily work and private functions.

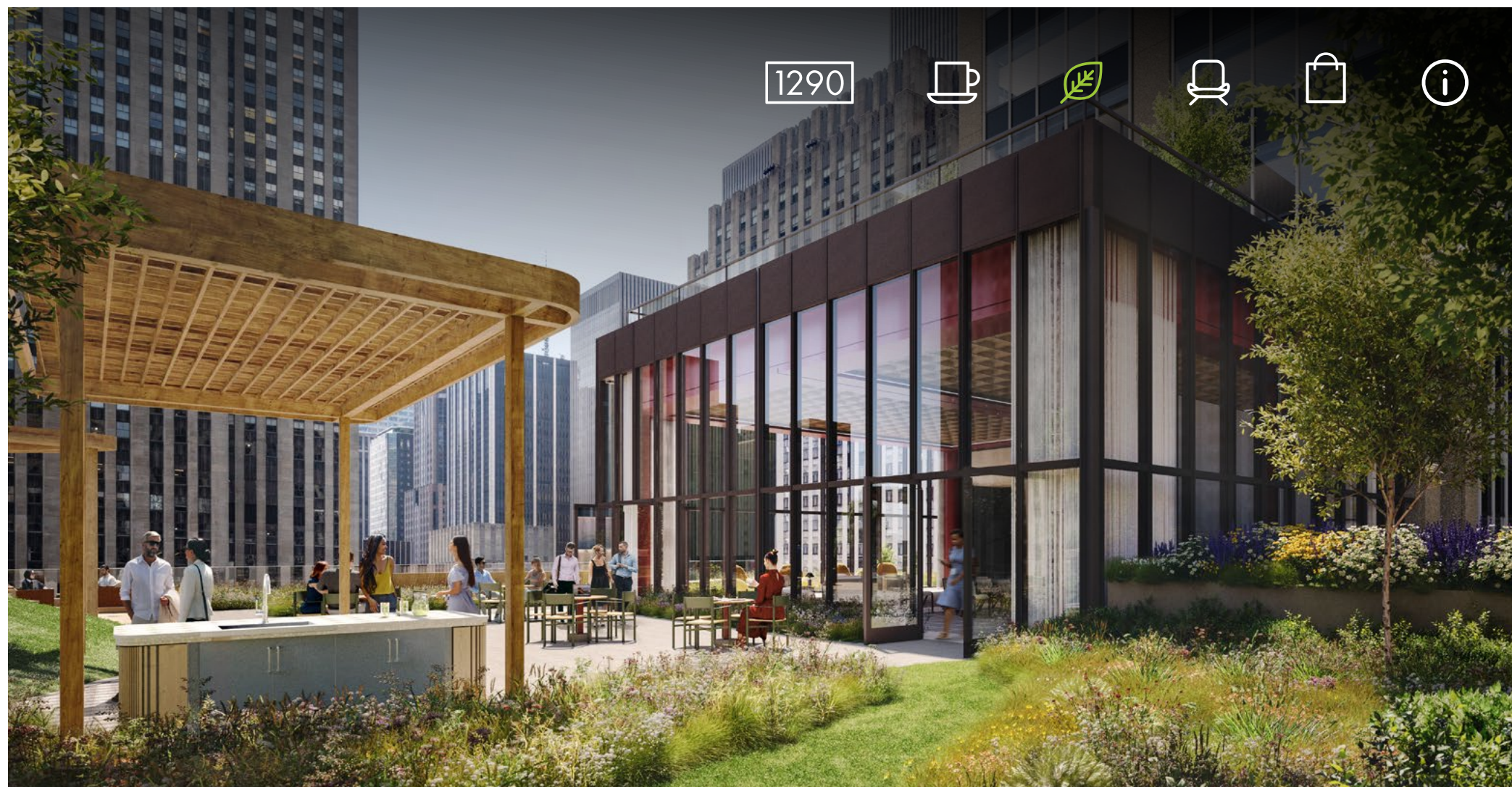
**10,000 SF**

Rooftop Park



**15,000 SF**

Prefunction Area  
& Pavilion



# PAVILION & TERRACE

The Pavilion is a 15,000 square foot, double-height, multifunctional lounge and town-hall inspired public space, for use exclusively by residents. Accommodating up to 230 guests, it also features a full-service bar, reception and meeting rooms.

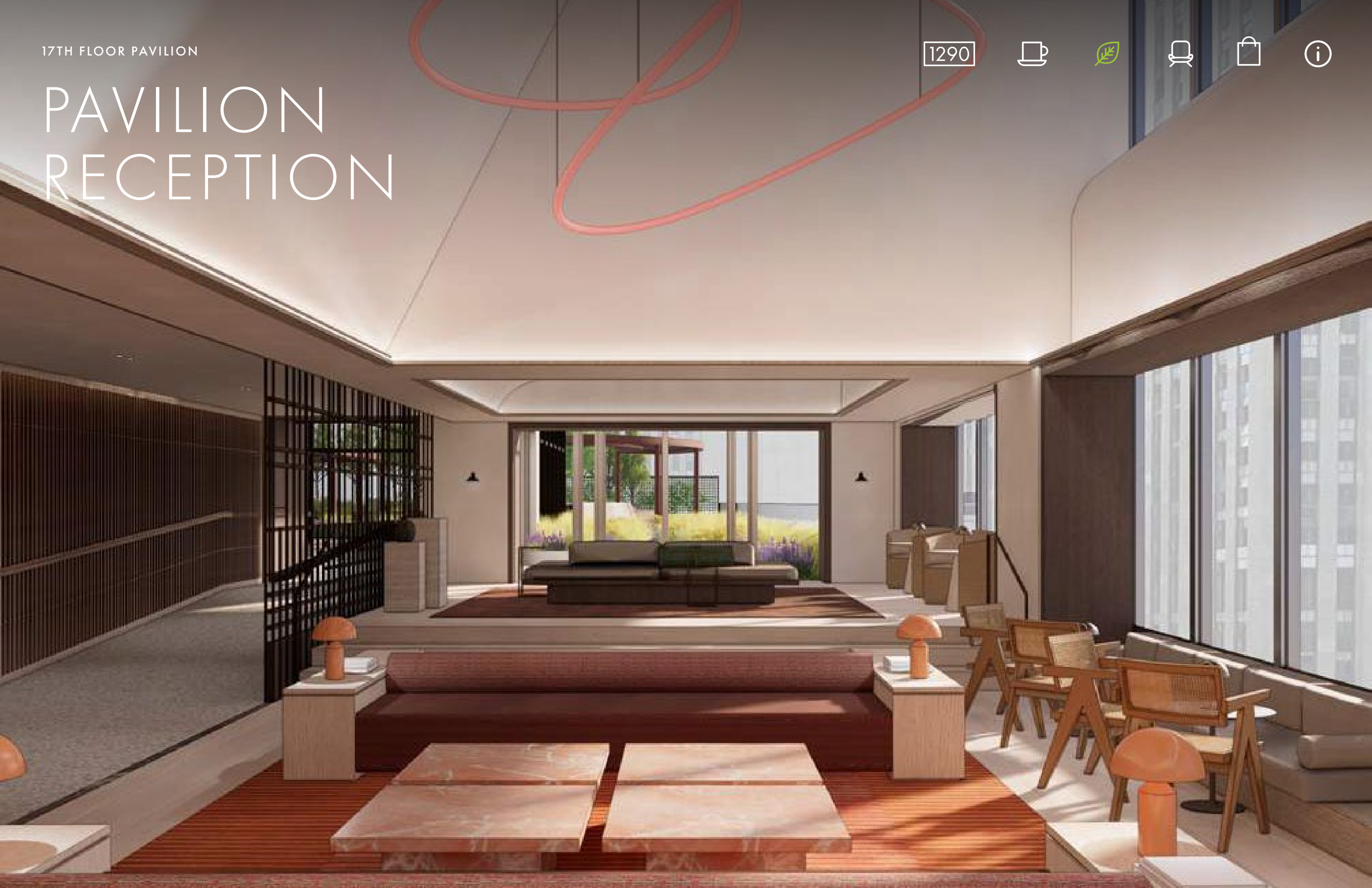


17TH FLOOR PAVILION

1290



# PAVILION RECEPTION



17TH FLOOR PAVILION

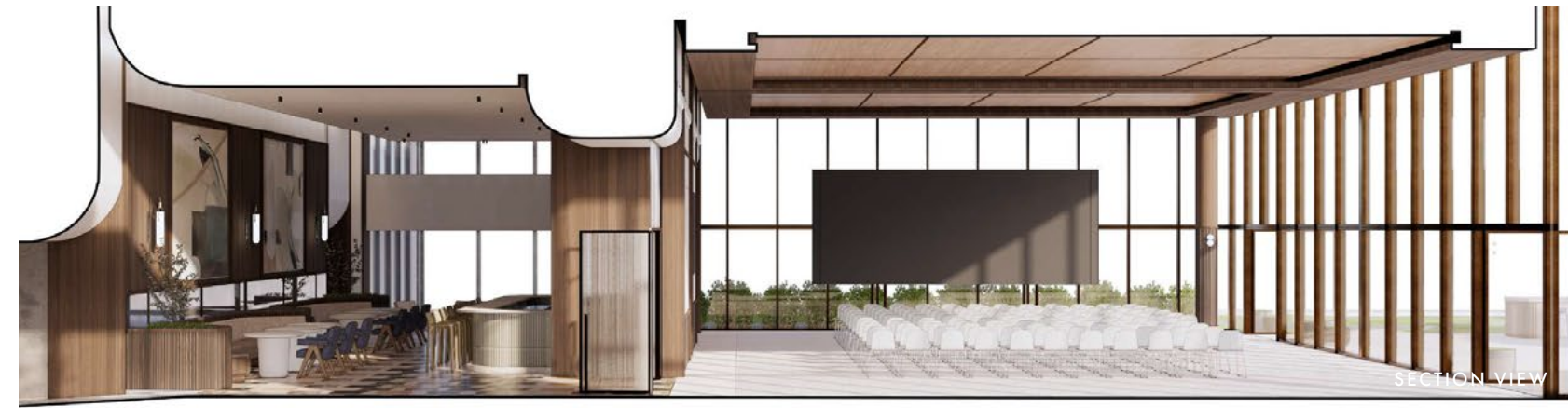
# PAVILION BAR

1290

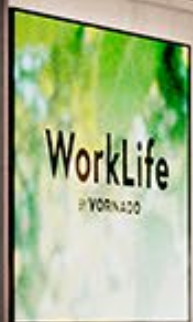
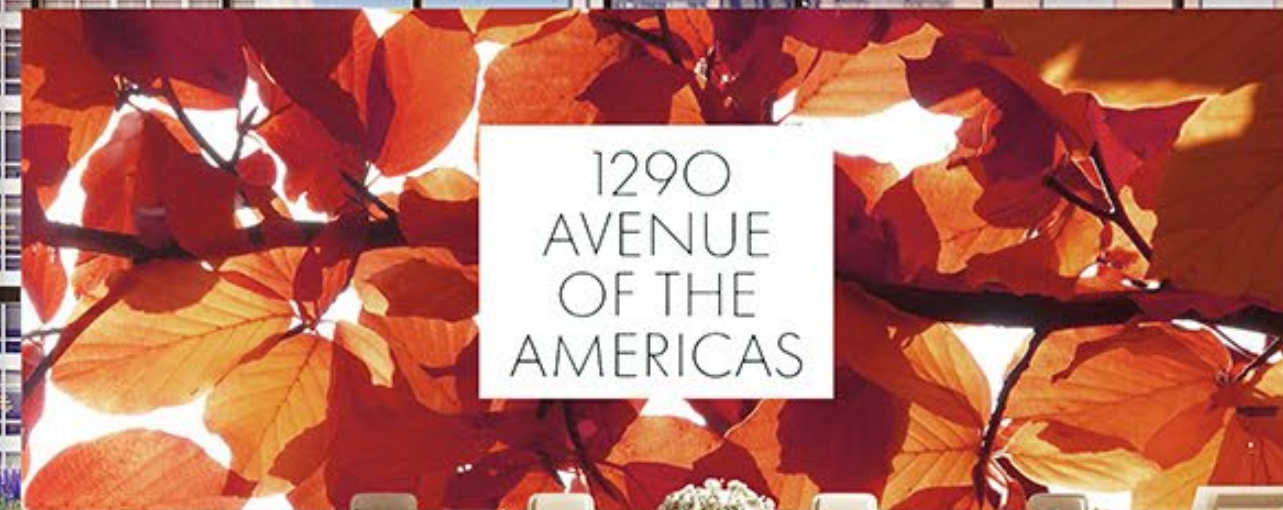




# PAVILION CONFERENCE VIEW



# PAVILION CONFERENCE LAYOUT



# PAVILION LOUNGE VIEW

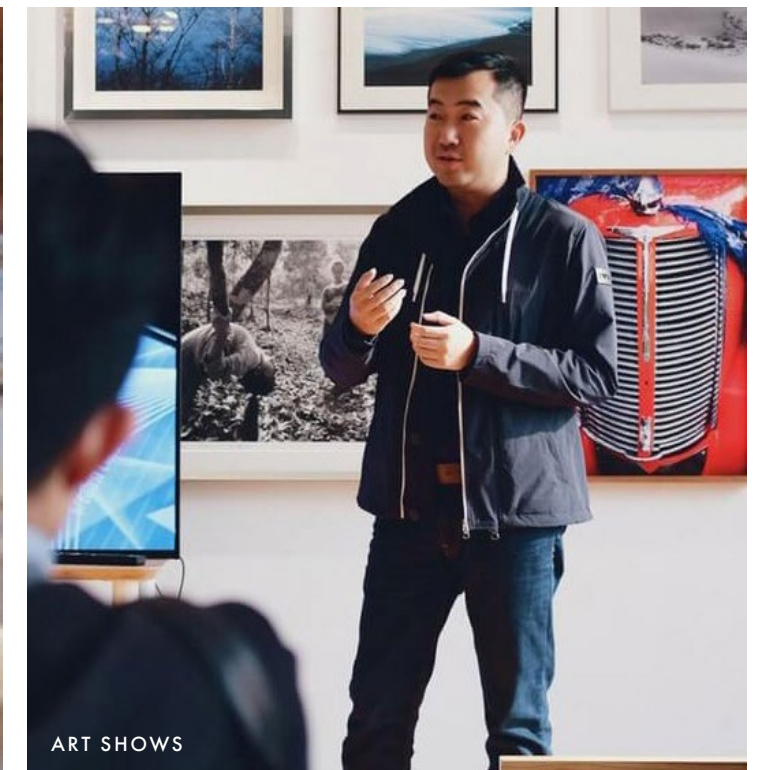


# PAVILION LOUNGE LAYOUT

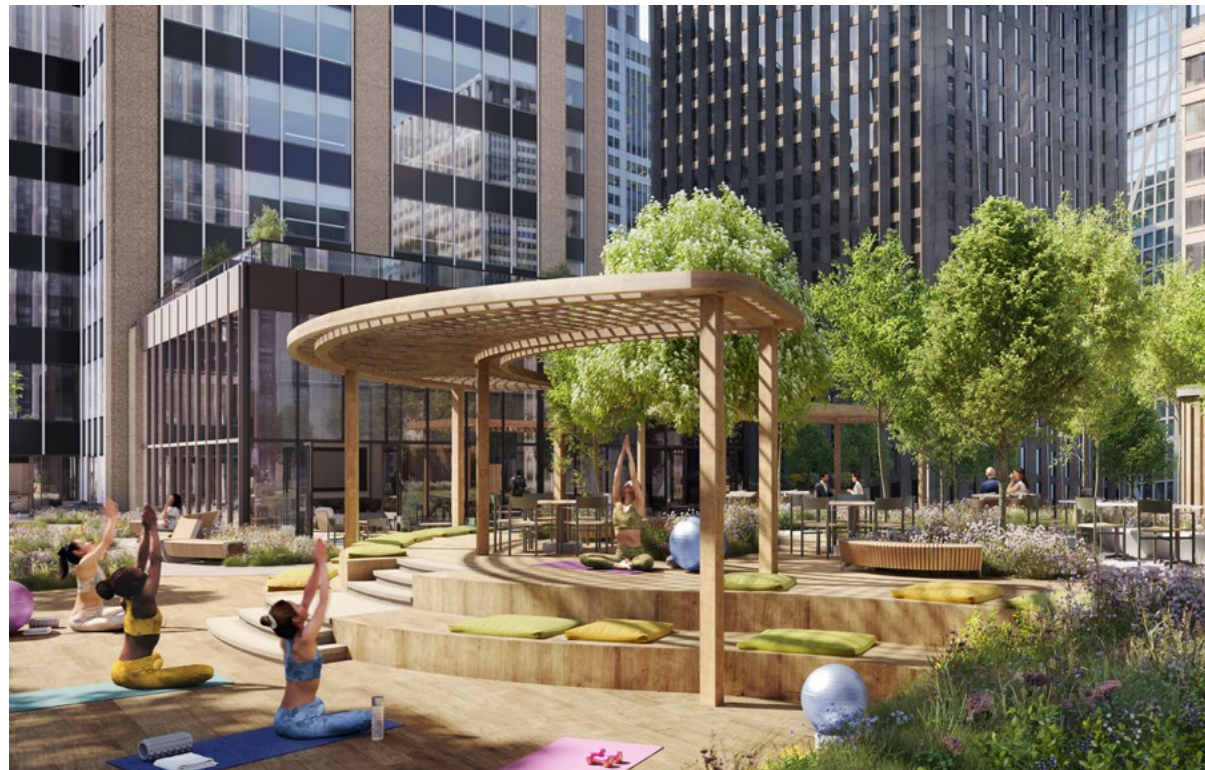
# PAVILION SEMINAR LAYOUT



# 17TH FLOOR ACTIVATIONS



# MORE CENTRAL THAN CENTRAL PARK



Inspired by the simple leaf,  
The Garden features multiple  
decks, gently sloping hills,  
green lawns and tree-covered  
oases, providing the ultimate  
work-life balance.