

875

WASHINGTON STREET

— Sublease Opportunity —



Sublease Space Profile

Total Size:

26,466 RSF

Floors:

Entire 2 – 13,233 RSF

Entire 3 – 13,233 RSF

Base Rent:

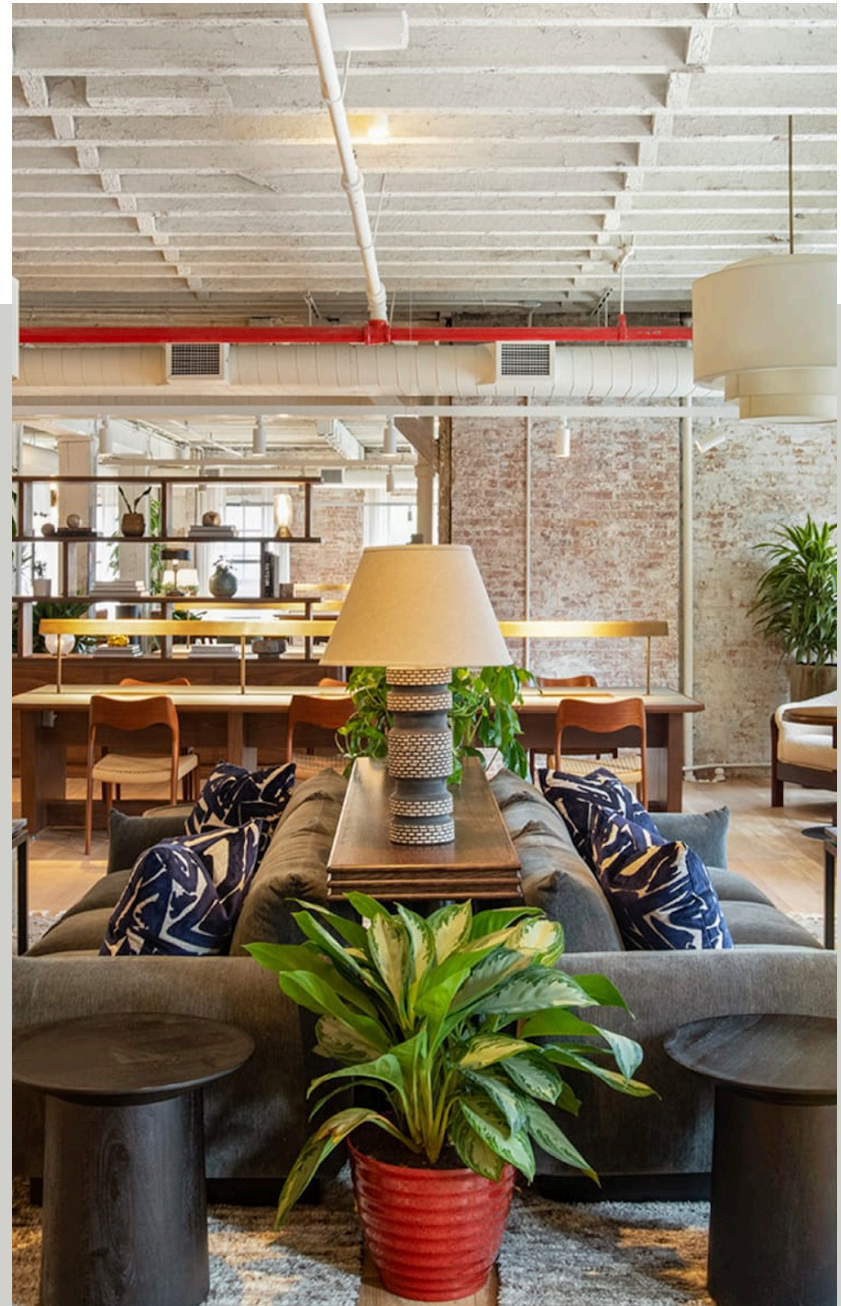
Upon request

Possession:

Arranged

Term:

Through November 31, 2034



Space Highlights

Fully furnished and wired sublease

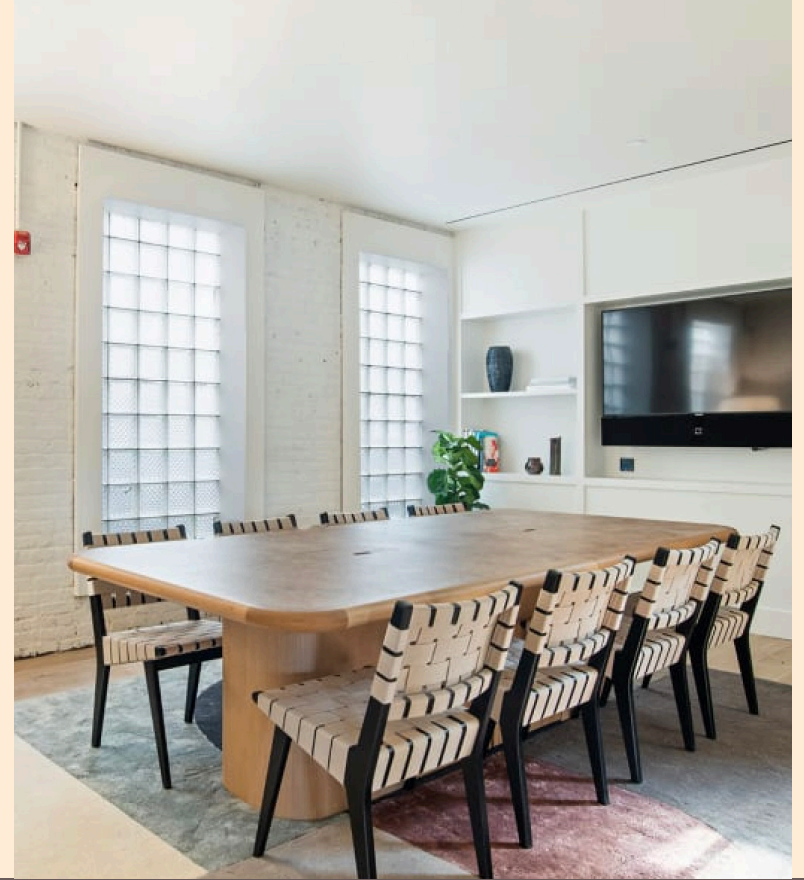
Lounge spaces with soft seating and large collaboration areas

High-end, hospitality driven design

Bespoke, high-quality furniture and fixtures

Entrance along West 14th Street

Timber rafters, hardwood flooring, and brick walls throughout



Building Features

In the heart of the Meatpacking District

Steps from the Highline and Little Island

Beautifully renovated loft building

Walking distance to the **A** **C** **1** **2** **3** , subway lines

Close proximity to the most desirable restaurants, luxury retail, and shopping in the Meatpacking District

Entire 2nd & 3rd Floors | 13,233 RSF EACH

Space Notes

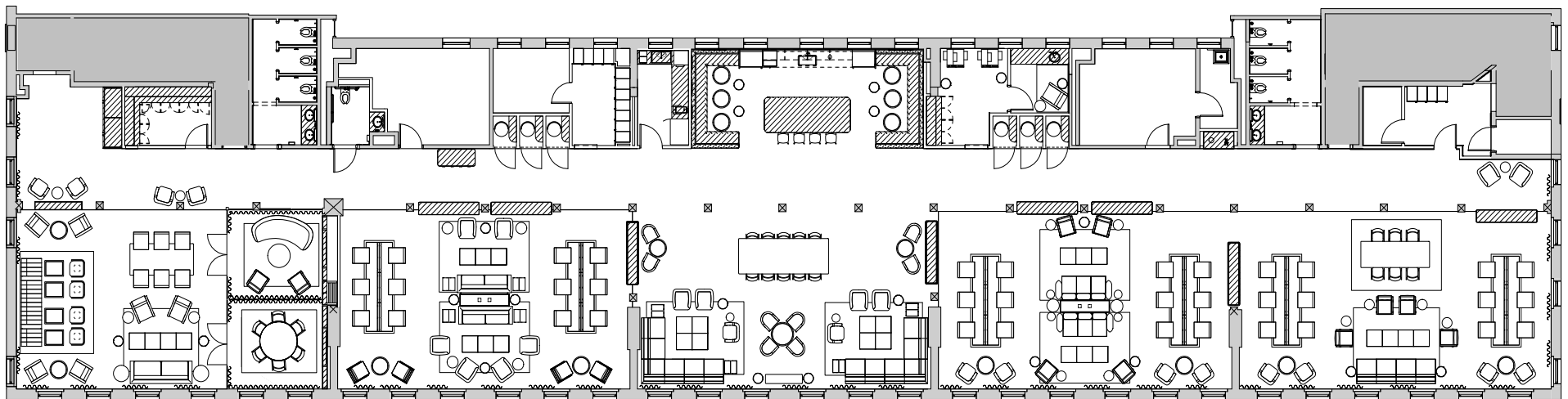
2 conference rooms

6 phone booths

36 workstations (ability to densify)

Lounge areas and collaboration space

Pantry



*Representative floor plan



Location Overview

875

WASHINGTON STREET

