



MODERN
OFFICE SPACE
IN A **Historic**
Setting

43W23

TOTAL DUPLEX
MEASURES
26,607 RSF

4th Floor

13,362 RSF

High end creative
installation which
ownership plans
to upgrade upon
possession.

3rd Floor

13,245 RSF

High end creative
installation which
ownership plans
to upgrade upon
possession.



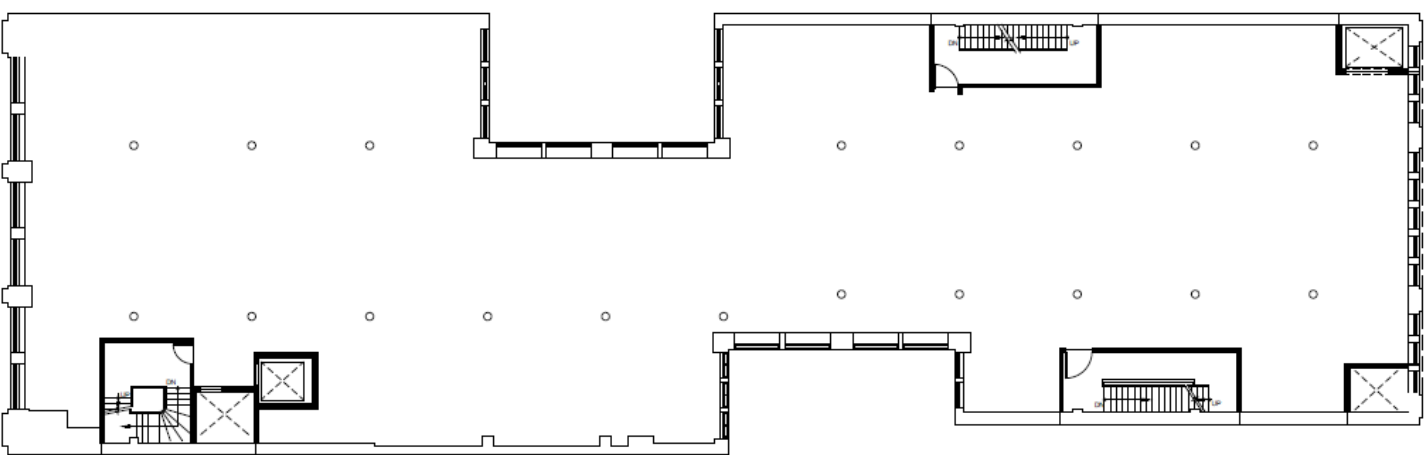
BEAUTIFUL
INTERCONNECTING
STAIRWELL IN
RECEPTION
CONNECTING
BOTH FLOORS

Steps from Madison Square Park with convenient access to the 4 5 6 N Q R F M L subway lines, the 23rd Street PATH train, and several bus stops.

EXAMPLE TEST FIT LAYOUT



CORE & SHELL PLAN





Example Building Finishes



3234



History PRESERVED

THE CASTRO BUILDING

Known for designing the original Waldorf Astoria Hotel and the Plaza Hotel, famous architect Henry Hardenburgh put his golden touch on the boutique building that sits at **43 West 23rd Street**.

The building has undergone a complete renovation, with its original character meticulously preserved. Its original Victorian staircase elegantly greets visitors and tenants in the lobby.





Situated between 5th and Madison Avenues and 23rd and 26th Streets, Madison Square Park has charmed both residents and visitors since its designation as a public space in 1847. Famous residents included former President Theodore Roosevelt, Mark Twain, Edith Wharton.

During the early 20th century, the park was surrounded with lively entertainment venues, restaurants, theaters, shops, and hotels. It was in 1902 that the world-famous Flatiron Building was constructed on the south side of the park, adding to the charm and splendor of the neighborhood.

Today, Madison Square Park continues to be a popular public space where crowds gather for seasonal festivals, foodie events, and other attractions.

