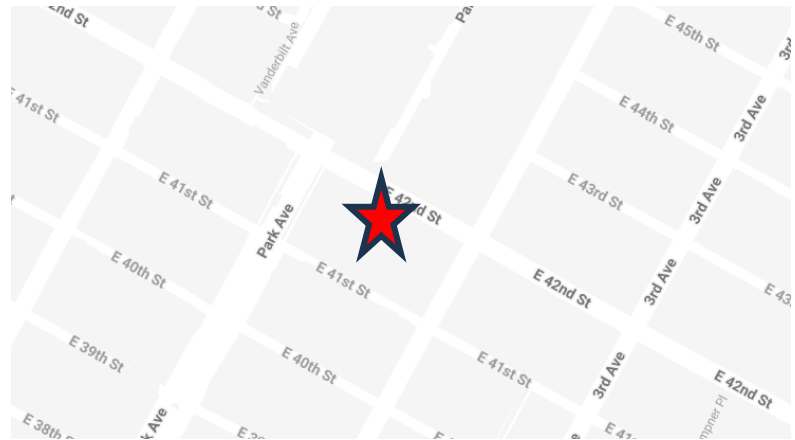


For sublease

60 East 42nd Street – Partial 6th Floor



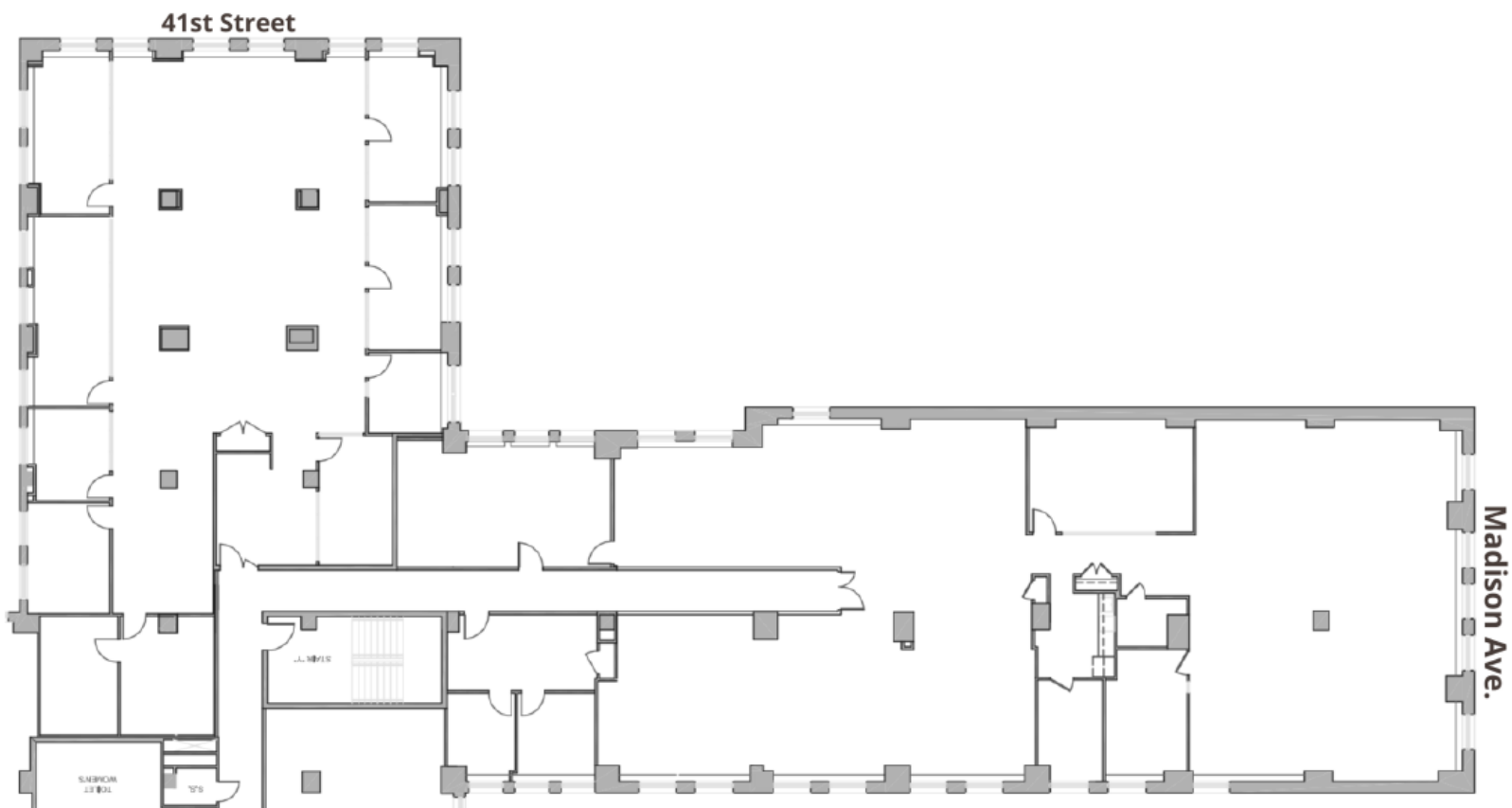
Between 41st & 42nd Streets

Partial 6th Floor

- Partial 6th Floor: 16,314 RSF
- Available Immediately
- Built space with mix of private offices, conference/meeting rooms and open area
- Sublease Term: Through January 2027
- Prime Grand Central location with direct access to the 4/5/6, 7, S, Metro North & LIRR

For sublease

Partial 6th Floor – 16,314 RSF
Existing Conditions



For sublease

Partial 6th Floor – 16,314 RSF
Space Photos

