

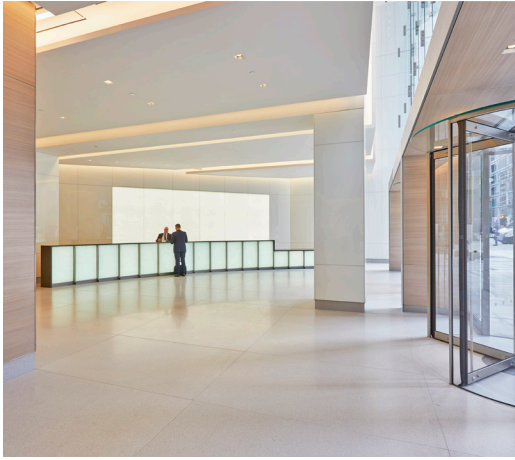
# 1155

AVENUE OF THE AMERICAS

A VIEW FOR EVERY VISION

## ENTIRE FLOOR 24

16,563 SF



LOBBY



PLAZA & ENTRANCE

### AVAILABILITY

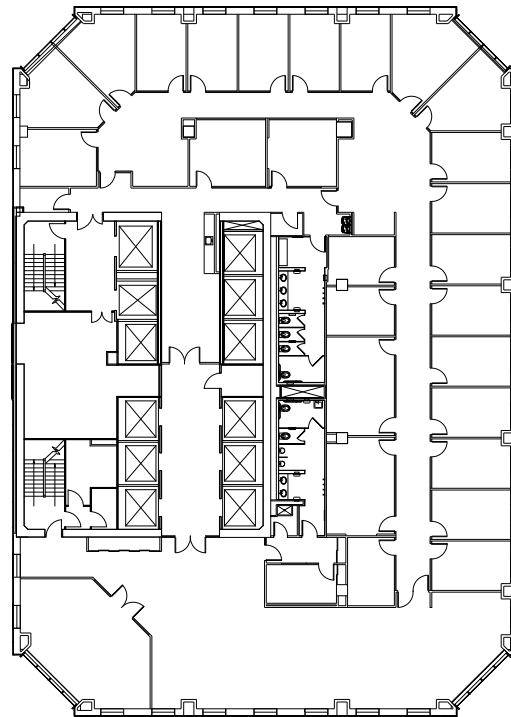
- Recently Built Space
- Views of Midtown and Bryant Park
- Available Q2 2025

### PROPERTY FEATURES

- New Landscaped Plaza, Building Entrance, and Lobby
- Elevator Modernization Including Destination Dispatch Controls
- New Energy-Efficient Curtain Wall With Floor-to-Ceiling Clear Glazing at Chamfered Corners
- New Low-Iron Energy-Efficient Casement Windows
- Certified LEED Gold Under LEED v4 Existing Buildings: Operations + Maintenance
- Located at the Convergence of Bryant Park and Corporate Row — Mere Minutes From Grand Central Terminal, 16 Subway Lines, and Some of NYC's Best Dining and Entertainment

### AS-BUILT PLAN

West 45<sup>th</sup> Street



West 44<sup>th</sup> Street

Avenue of the Americas