



PRIVATE TERRACES @  
**19 WEST**  
**34<sup>TH</sup> STREET**



FLOORS / AREA

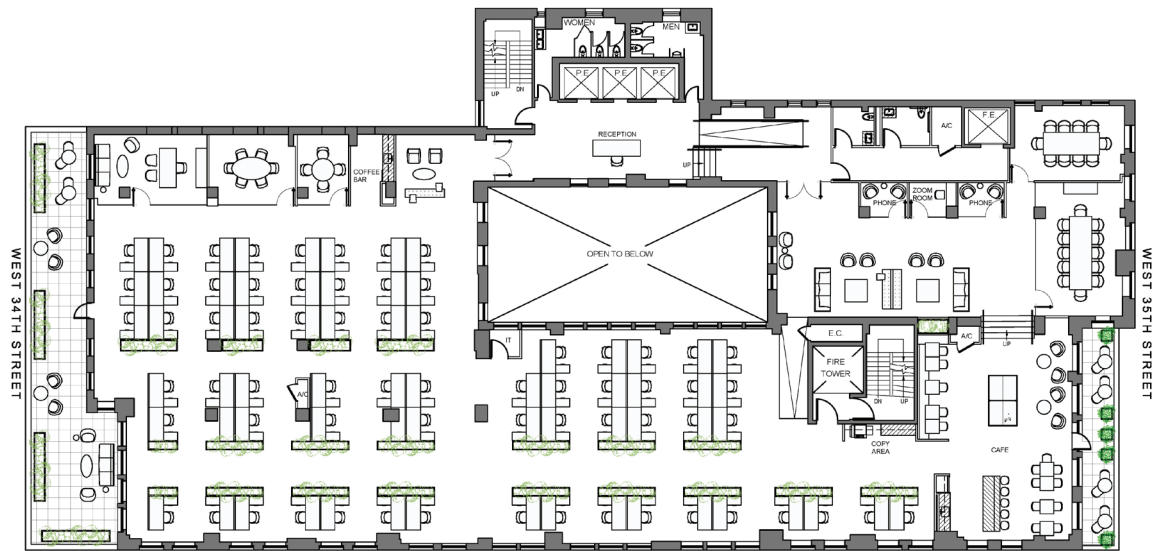
ENTIRE 12<sup>TH</sup> FLOOR | 19,093 RSF

POSSESSION  
**IMMEDIATE**

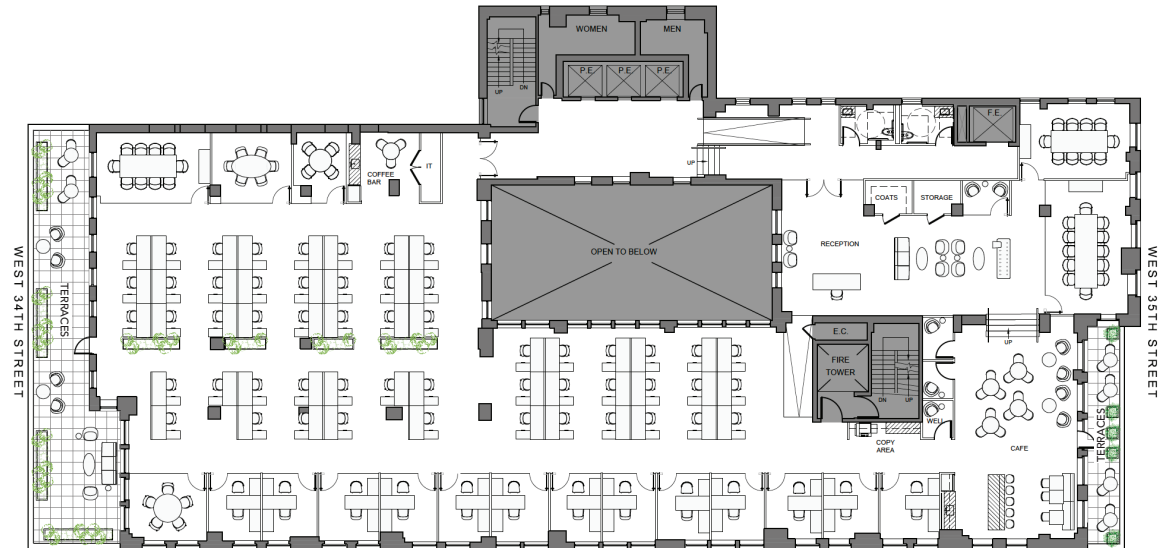
- Brand new, high-end prebuilt
- Two **private terraces** facing North and South
- Full floor with four sides of exposure and frontage block-through from 34th to 35th Street
- Great natural light throughout
- Custom, sunken pantry / lounge space overlooking private terrace
- Polished concrete floors, exposed ceilings, and blacked metal framed glass offices and conference rooms
- New restrooms, elevator lobbies, HVAC systems, etc.
- Doorman lobby has been renovated and all building systems have been upgraded



## 12<sup>TH</sup> FLOOR | AS-BUILT PLAN



## 12<sup>TH</sup> FLOOR | TEST FIT A







HIGH-END CREATIVE FINISHES & EXPANSIVE TERRACES







LARGE COLLABORATIVE PANTRY & AMPLE CONFERENCING







RENOVATED BUILDING LOBBY







THE MARTIN BUILDING