

**AGGRESSIVELY REDUCED  
PRICING/BEST TERRACE  
OVERLOOKING BRYANT PARK**

For **sublease**

Newly built sublease  
across from Bryant  
Park with large  
exclusive terrace

**500 Fifth Avenue**

**SPACE PROFILE**

19,955 SF  
Total SF

Entire 8th  
Floor

Upon Request  
Rental rate

Immediate  
Availability

March 2039  
Term (shorter term available)



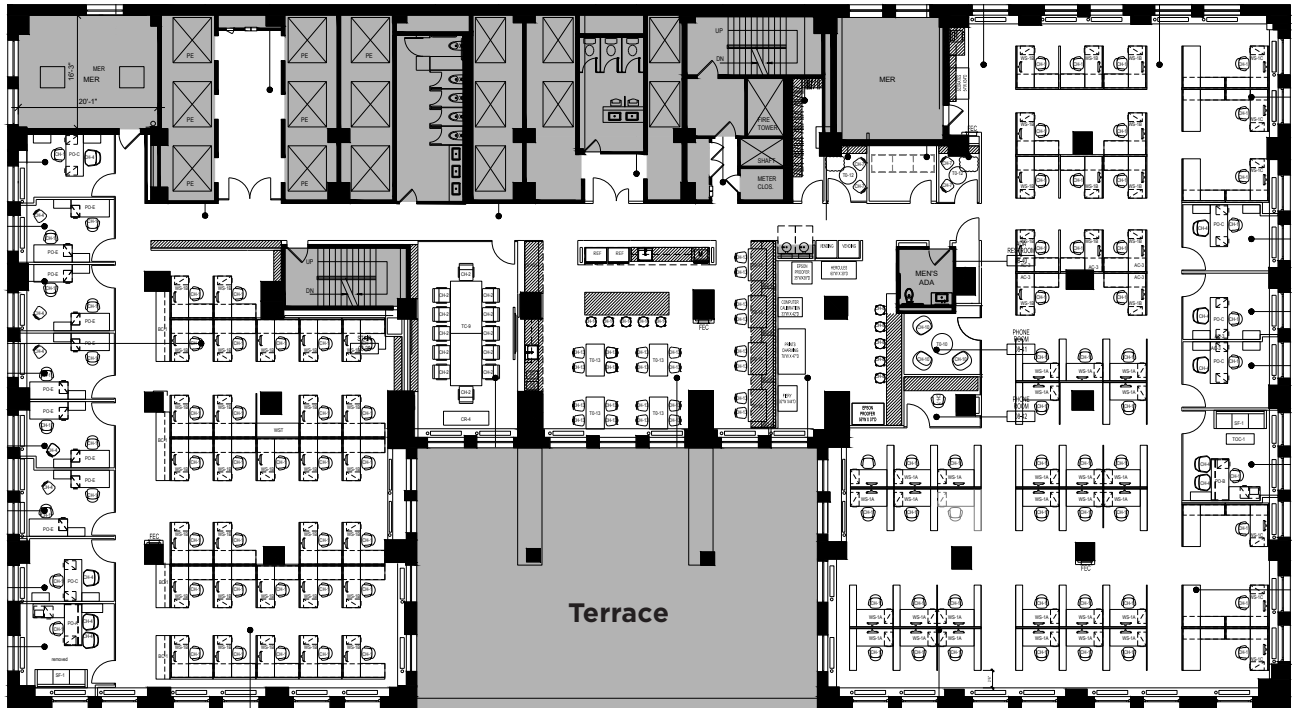


#### KEY HIGHLIGHTS

- Strong sublandlord
- **Large furnished/landscaped terrace overlooking Bryant Park**
- Newly built installation featuring exposed ceilings and a mix of offices and open areas
- Proximate to the B, D, F, M trains at Bryant Park and the 4, 5, 6, 7, S, Metro North and Long Island Rail Road at Grand Central Terminal

## ENTIRE 8TH FLOOR

19,955 SF



**42nd Street**  
(overlooking Bryant Park)

- 12 perimeter offices
- 78 workstations
- 1 huddle room
- 1 conference room for 12 people
- 2 phone rooms
- 1 large café with seating
- 1 large terrace (overlooking Bryant Park)

