

14 West 23rd Street

FOR LEASE | OFFICE SPACE | NEW YORK, NY 10010

PROPERTY SUMMARY

14 West 23rd Street is a desired retail location in New York City with full exposure to Madison Square Park and the millions of people that visit it daily. Located across from the famous Eataly and Lego flagship locations just steps from the landmarked Flatiron Building 23rd Street, is lined with prestigious shops offering high foot traffic consistently ranked among the most visited streets in the world.

PROPERTY INFORMATION

Second Floor: 2,000 SF (approx.)
Ceiling Height: 14'
Frontage: 25' on 23rd Street between 5th & 6th Ave

PROPERTY FEATURES

- Close to major subway and bus transportation
- Recently renovated turn key office space with large picture windows along 23rd Street
- Located on 23rd Street prime retail corridor
- Key private elevator and 2 restrooms
- Working HVAC
- Direct metered utilities

TRANSPORTATION

- Within walking distance to multiple subway stations & buses:
N, R, 6, 1, F, M, PATH, X27 and X37



NEIGHBORING TENANTS

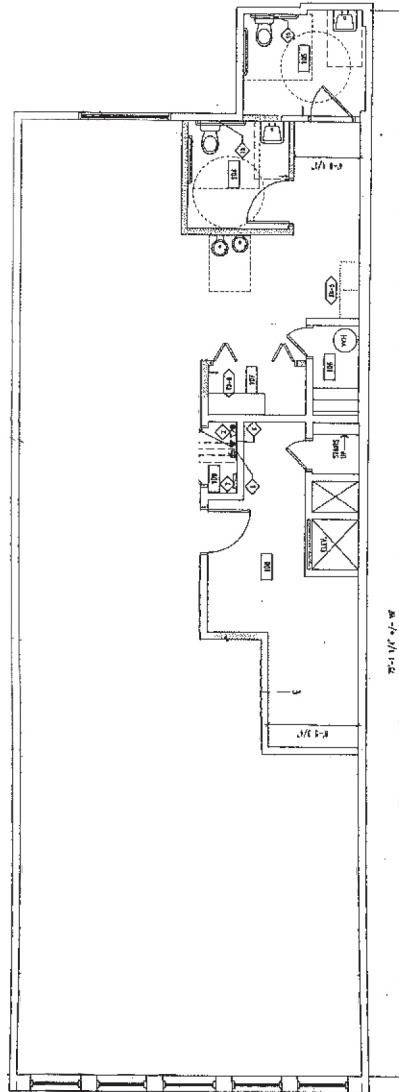


ASKING RENT: UPON REQUEST

14 West 23rd Street

FOR LEASE | OFFICE SPACE | NEW YORK, NY 10010

FLOOR PLAN



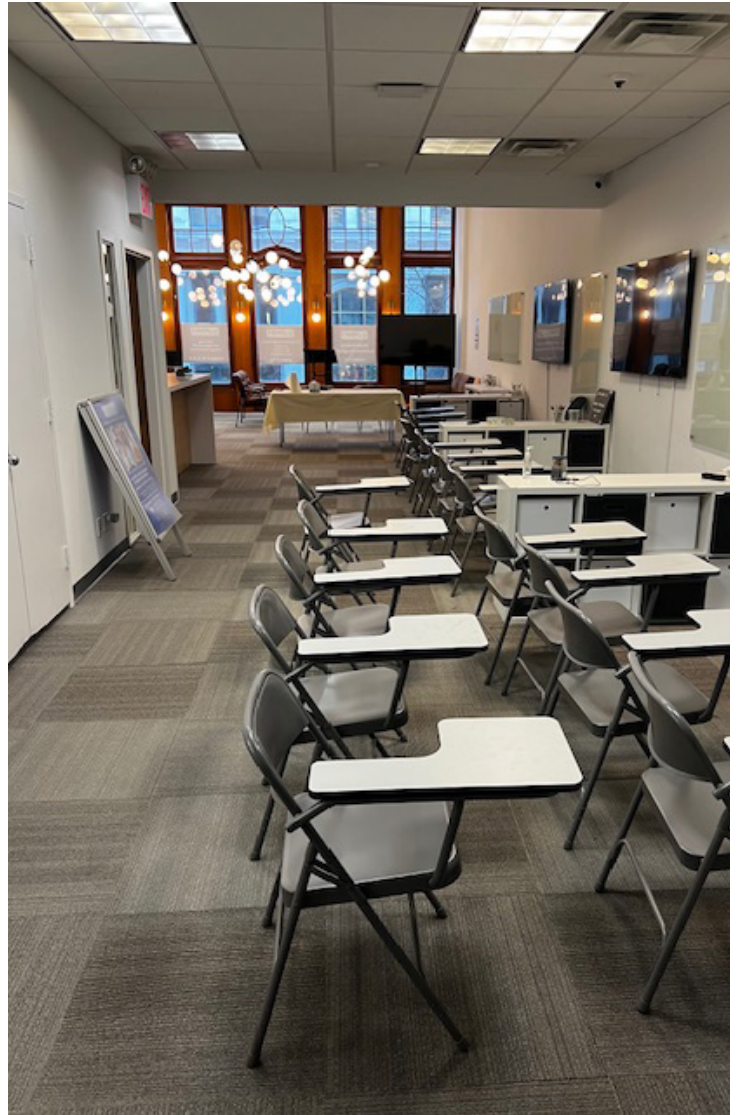
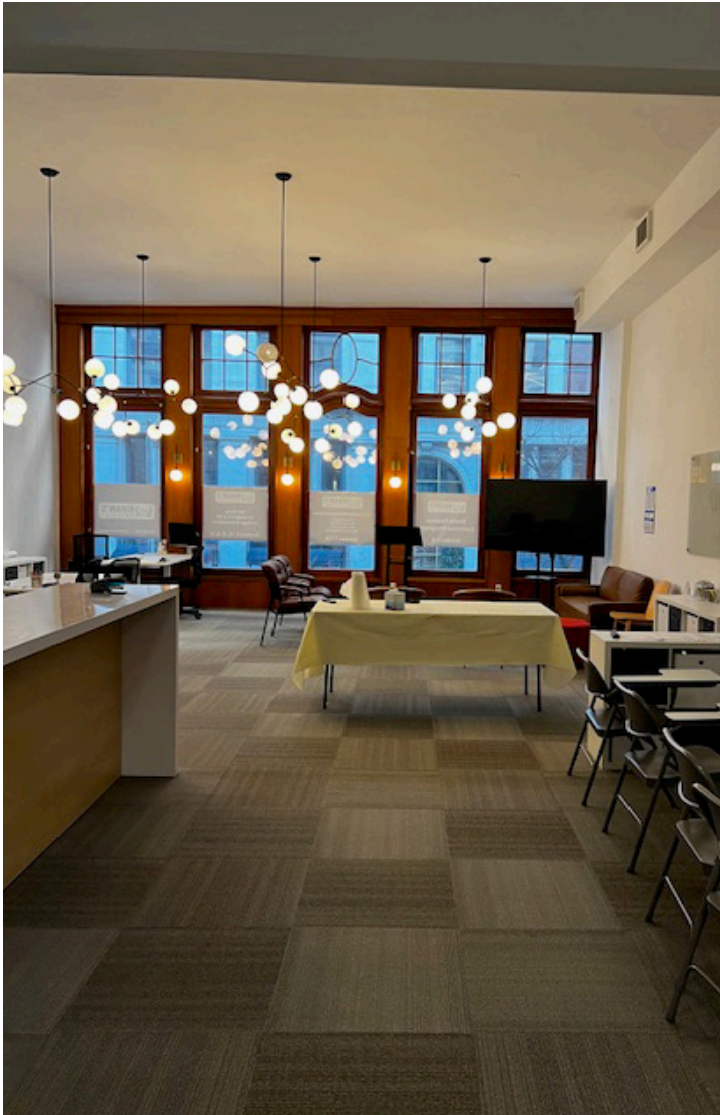
← 25' frontage →
23rd Street

ASKING RENT: UPON REQUEST

14 West 23rd Street

FOR LEASE | OFFICE SPACE | NEW YORK, NY 10010

INTERIOR PHOTOS

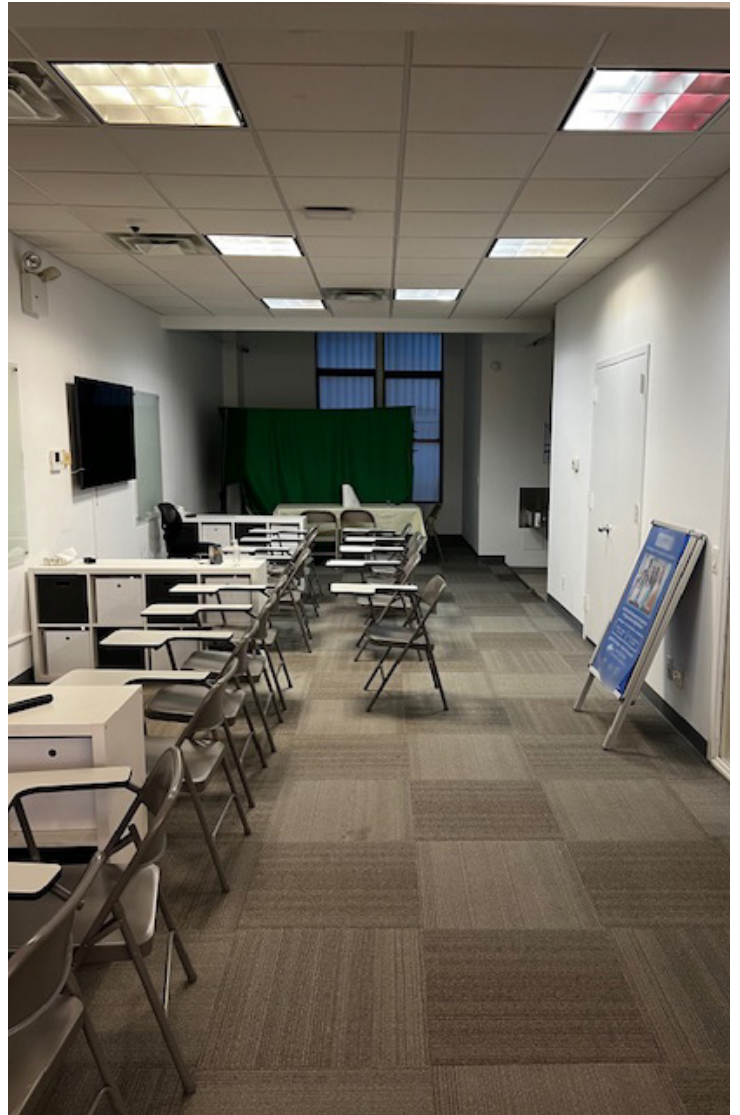


ASKING RENT: UPON REQUEST

14 West 23rd Street

FOR LEASE | OFFICE SPACE | NEW YORK, NY 10010

INTERIOR PHOTOS



ASKING RENT: UPON REQUEST
