

234 W 30th Street

Between 7th & 8th Avenue

Second Floor

- Second Floor 2,000 sf
- Two Private Bathrooms
- 12' Ceilings + Polished Concrete Floors
- 200 amps 3 phase power
- Private Entrance

BUILDING FEATURES

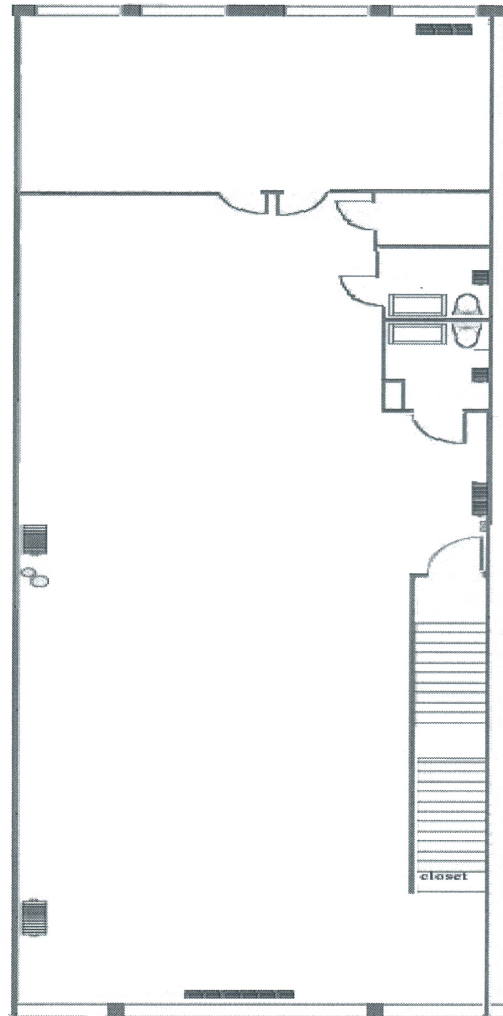
- High-end space in very good condition
- Large glass frontage
- Glass entrance door
- Two ensuite tiled bathrooms
- Wired with Verizon FIOS and Pilot Fiber
- Security gate
- On-site management and well maintained building
- 98 Energy Efficiency Rating
- USPS, UPS and FedEx within a block
- WALK SCORE ® and TRANSIT SCORE ® are 100
- Parking Garage across the street
- Near Transit Hubs:
Penn Station, Moynihan Station, Herald Square



Second Floor



Second Floor



LANDSCAPED ROOFDECK

Brand New Amenity
Sweeping City Views
Wi-Fi

