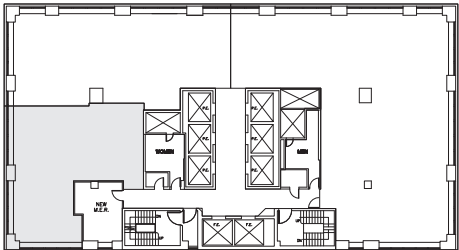


| FLOOR KEY | |
|------------------|----|
| Offices | 2 |
| Workstations | 10 |
| Conference Rooms | 1 |
| Pantry | 1 |
| Reception | 1 |
| Total Personnel | 13 |



[Click here for more information](#)



| FLOOR KEY | |
|------------------|----|
| Offices | 2 |
| Workstations | 10 |
| Conference Rooms | 1 |
| Pantry | 1 |
| Reception | 1 |
| Total Personnel | 13 |

