



# 555

## WEST 25TH STREET

BETWEEN TENTH AND ELEVENTH AVENUES



# 555 WEST 25TH STREET

Partial 3rd Floor

## SIZE & ASKING RENT

Space D: 2,025 SF, \$8,000/month

## POSSESSION

Immediate

## TERM

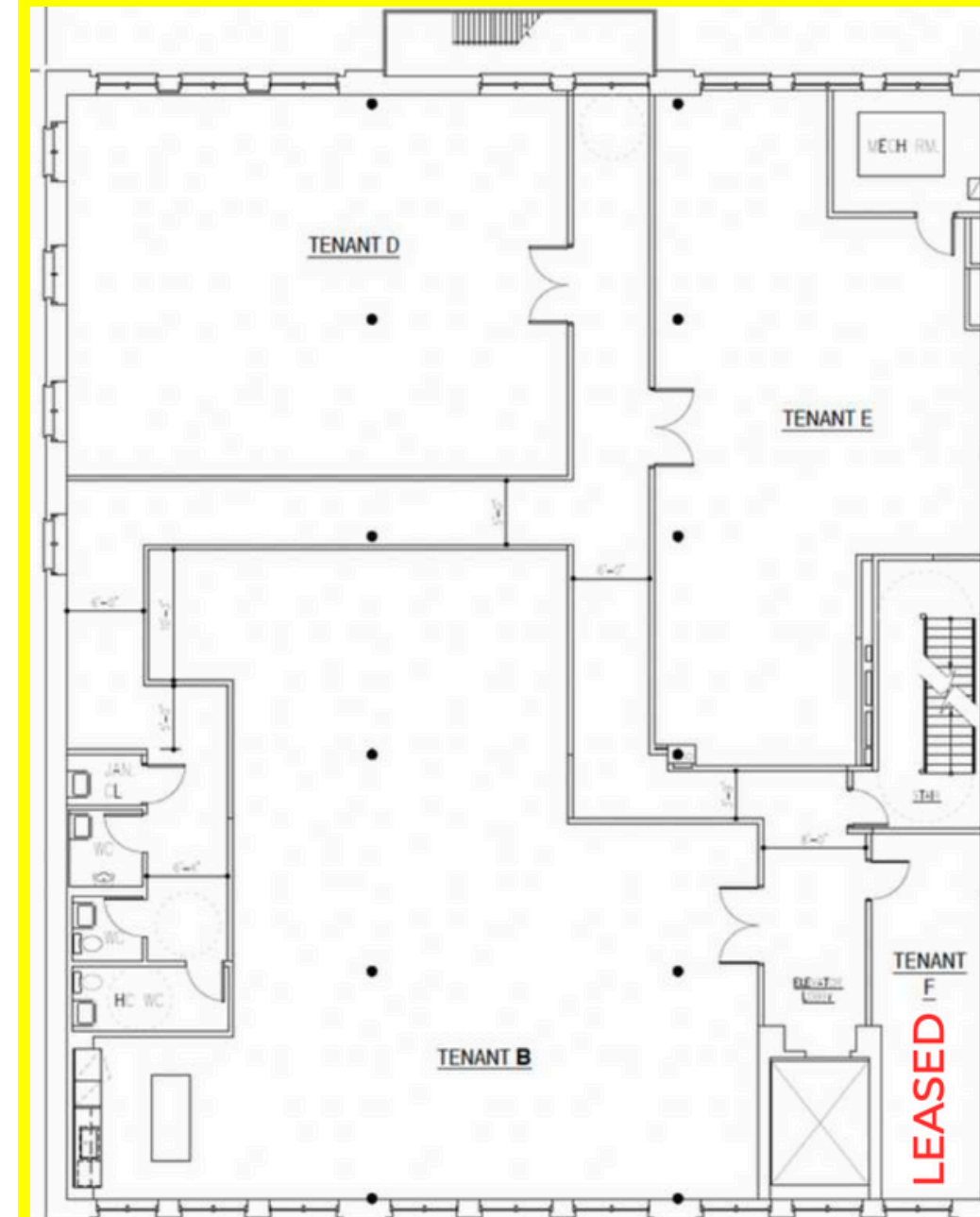
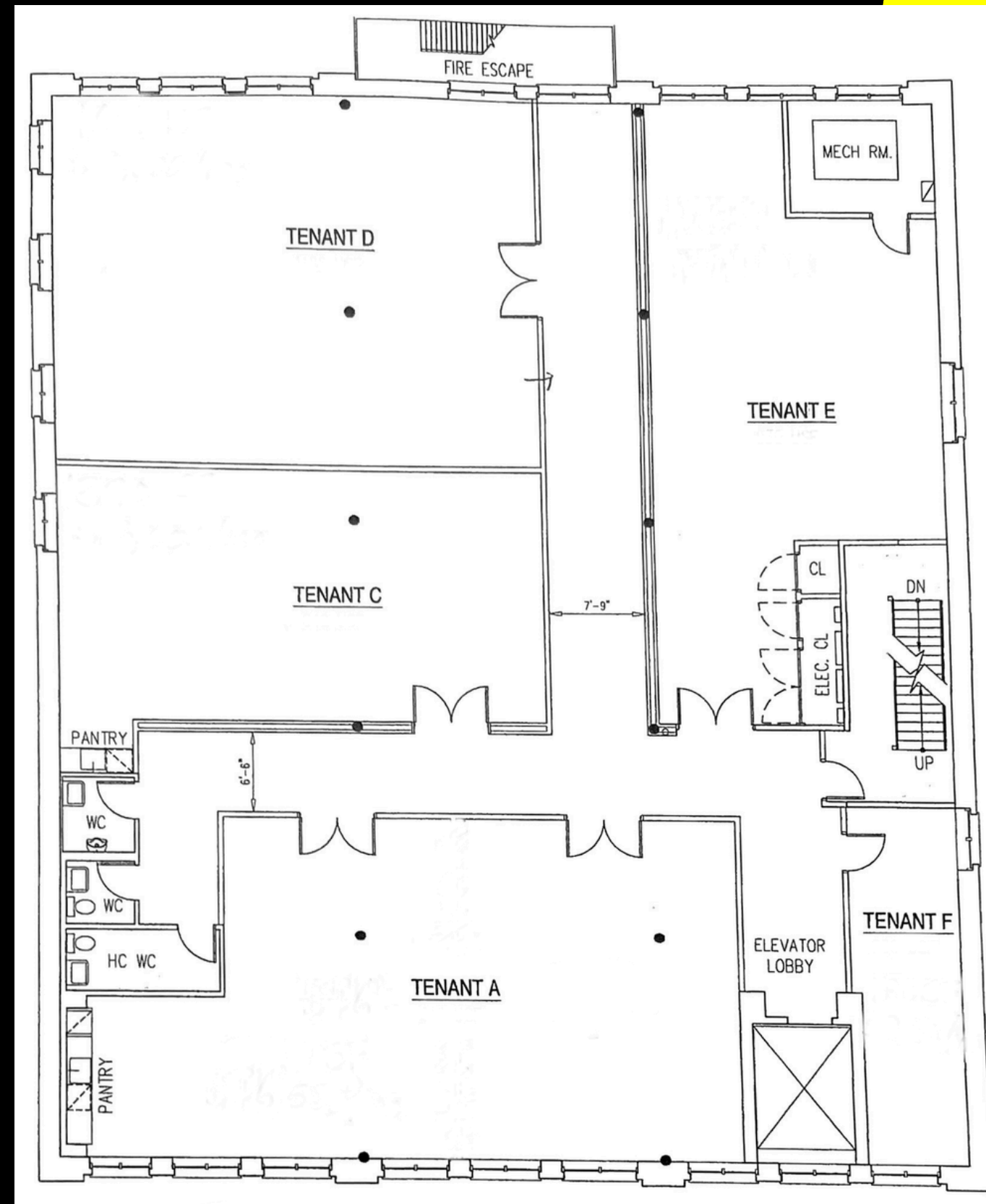
Negotiable

## HIGHLIGHTS

Newly divided office spaces

Can be delivered furnished

Spaces A, C and B have pantries



Space B  
(Alternate)

# **555 WEST 25TH STREET**

Space D



