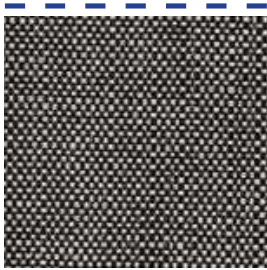


FINISH PLAN & FINISHES

WALL FINISHES



**PAINT | BENJAMIN MOORE**  
CHANTILLY LACE OC-65  
TYPICAL THROUGHOUT



**FABRIC PANEL | CARNEGIE**  
XOREL METEOR 6427S-2023  
AT RECEPTION ACCENT WALL



**RUBBER BASE | ALLSTATE**  
NO TOE WALL BASE, 2.5"H IN WHITE  
TYPICAL THROUGHOUT

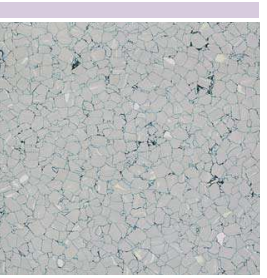
FLOOR FINISHES



**CARPET | INTERFACE**  
WORLD WOVEN IN CHARCOAL LOOM,  
18"x36", ASHLAR INSTALLATION  
TYPICAL THROUGHOUT



**WOOD FLOOR | PROVENZA FLOORING**  
NEW YORK LOFT IN UNION SQUARE,  
7.5"W, RANDOM LENGTHS  
AT RECEPTION/CORRIDORS/PANTRY



**VINYL TILE | ROPPE**  
ESD STATIC CONTROL IN GRAY HAZE,  
12"x12"  
AT IT ROOM

CEILING FINISH



**WOOD SLATS**  
EBONIZED RIFT CUT WHITE OAK  
AT WOOD SLAT CEILING

PANTRY FINISHES



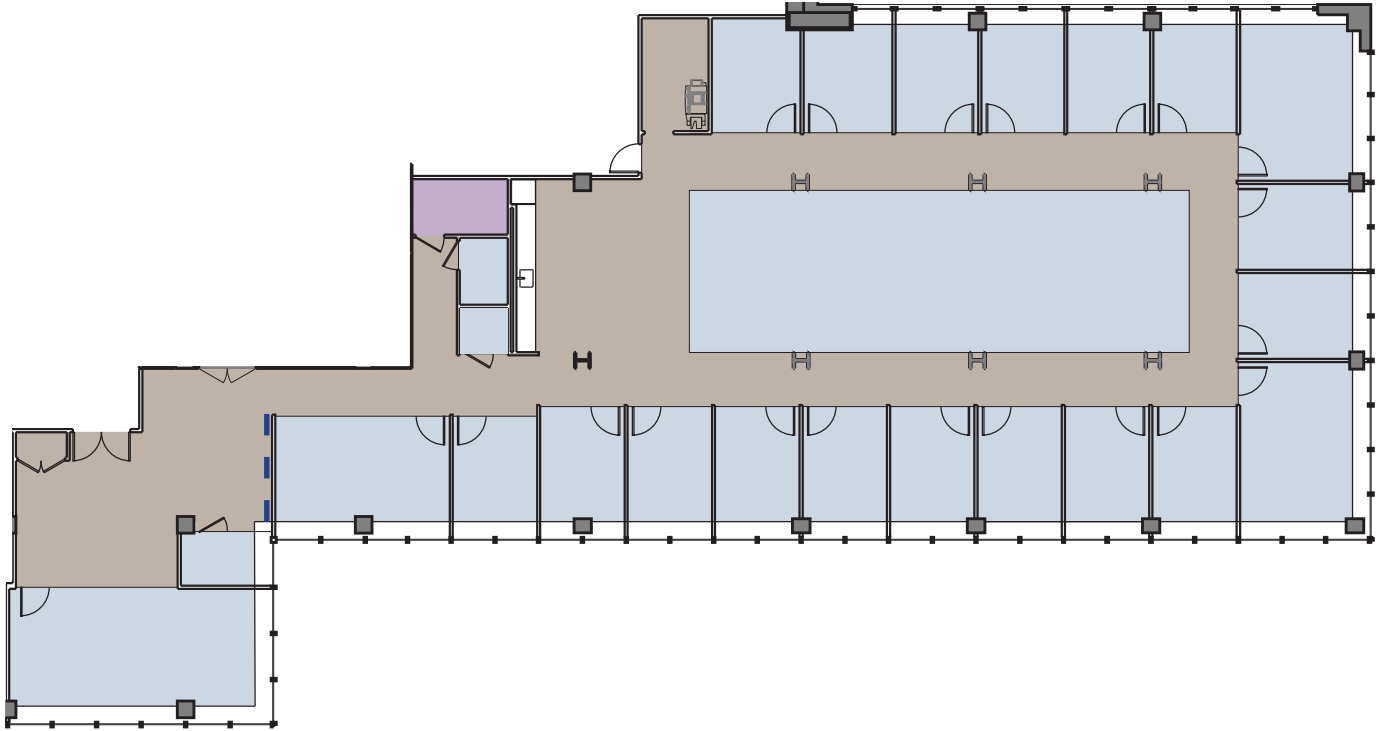
**PLASTIC LAMINATE | WILSONART**  
SATIN BRUSHED BLACK ALUMINUM  
AT MILLWORK



**SOLID SURFACE | CAESARSTONE**  
SATIN BRUSHED BLACK ALUMINUM  
AT COUNTERTOP & BACKSPLASH



**SOLID SURFACE | CAESARSTONE**  
EMPIRA WHITE  
AT ISLAND



REFLECTED CEILING PLAN & CEILING/LIGHT FIXTURES

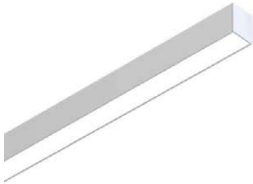
CEILINGS & LIGHTS FIXTURES



**ACOUSTICAL CEILING TILE | ARMSTRONG**  
- OPTIMA SQUARE LAY-IN TEGULAR 48"X48"  
*AT OPEN AREAS*  
- ULTIMA BEVELED TEGULAR 24"X48"  
*AT OFFICES*



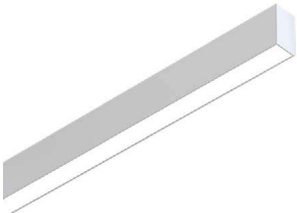
**WOOD SLAT CEILING | 9 WOOD**  
FAST-TRACK 1100 CROSS PIECE GRILLE  
CEILING, EBONY STAIN  
*AT CONFERENCE ROOMS & PANTRY*



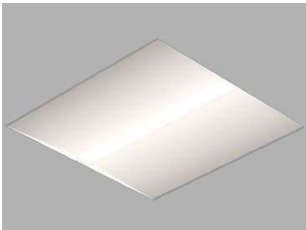
**LINEAR PENDANT LIGHT | CORONET**  
LS1 DIRECT IN BLACK  
*AT WOOD SLAT CEILING*



**RECESSED TRIMLESS DOWNLIGHT | AMERLUX**  
HORNET ROUND TRIMLESS DOWNLIGHT  
*AT CORRIDORS & MAIN CONFERENCE ROOM*



**RECESSED LINEAR LIGHT | CORONET**  
LSR1 DIRECT  
*AT OFFICES, OPEN AREAS & CONFERENCE ROOMS*



**2X2/2X4 LED BASKET | CORONET**  
NANOLED CYLINDER CNRD ROUND  
DOWNLIGHT  
*AT IT, COPY & WELLNESS ROOMS*



**TAPE LIGHT | KELVIX**  
PERFORMANCE 300 (INDOOR) PH-SERIES  
LINEAR LED  
*AT PANTRY MILLWORK*

