

For Lease



Finished Office Space for Lease

2,000 SF

106 E 19th St • New York • NY

Property Summary

106 E 19th St, New York, NY 10003



Location Overview

Located in the Gramercy Park neighborhood of Manhattan between Park Ave South & Irving Pl near the Union Square & 23rd St subway stations.

Nearest transit: 4 & 6 trains at 23rd St and the Q, N, R, W, L, & 5 trains at Union Square.

Nearby tenants include Chase Bank, Caffè Panna, CVS, Dunkin', Flushing Bank, Chipotle, Petco, Barnes & Noble, Starbucks, Blue Bottle Coffee, Il Mulino, Boucherie Union Square, and more!

Main Highlights

- ▶ Full fee offered to the tenant broker
- ▶ Finished office space
- ▶ 4 private rooms that can be used for office or conference rooms
- ▶ Kitchenette
- ▶ Two common rooms on each side with windows
- ▶ Elevator building



27,585 SF

Total Building Size

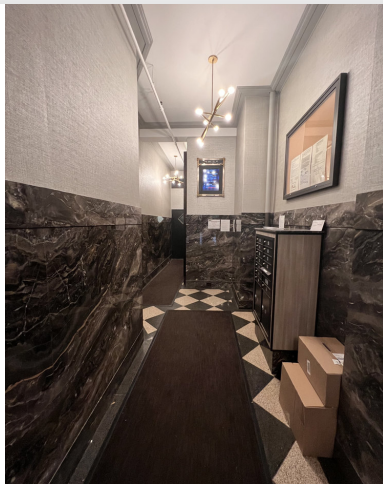


2,300 SF

Lot Size

Additional Photos

106 E 19th St, New York, NY 10003



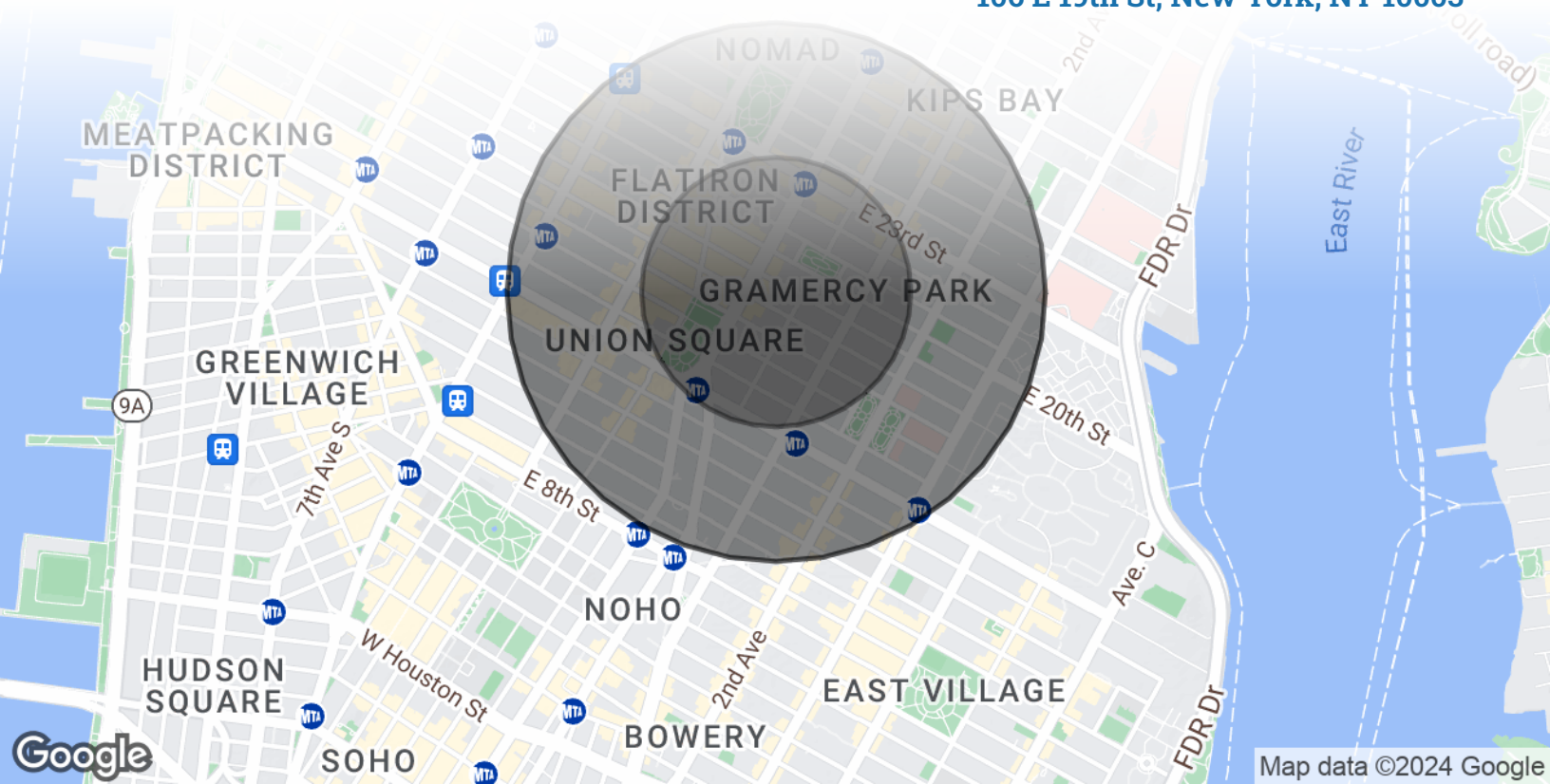
Retailer Map

106 E 19th St, New York, NY 10003



Area Demographics

106 E 19th St, New York, NY 10003



POPULATION	0.25 MILES	0.5 MILES	0.5 MILES
Total Population	15,549	65,628	65,628
Average Age	32.8	32.9	32.9
Average Age (Male)	35.5	34.5	34.5
Average Age (Female)	30.7	31.6	31.6
HOUSEHOLDS & INCOME	0.25 MILES	0.5 MILES	0.5 MILES
Total Households	8,076	34,165	34,165
# of Persons per HH	1.9	1.9	1.9
Average HH Income	\$181,802	\$161,993	\$161,993
Average House Value	\$760,889	\$817,261	\$817,261



65,628

People within 0.5 Miles



\$161,993

Avg Household Income