

OFFICE
SUBLEASE

BUILT
SPACE

PLUG
&
PLAY

2,151 SF

444 MADISON AVENUE

Between 49th & 50th Streets



Availability:

- Partial 39th Floor
- **Total: 2,151 SF**
- Availability: Immediate
- Asking Rent: Negotiable
- Term: Through February 2029

Space Features:

- Fully furnished and wired
- 6 Workstations
- Conference Room
- Kitchen/Lounge
- Direct elevator presence

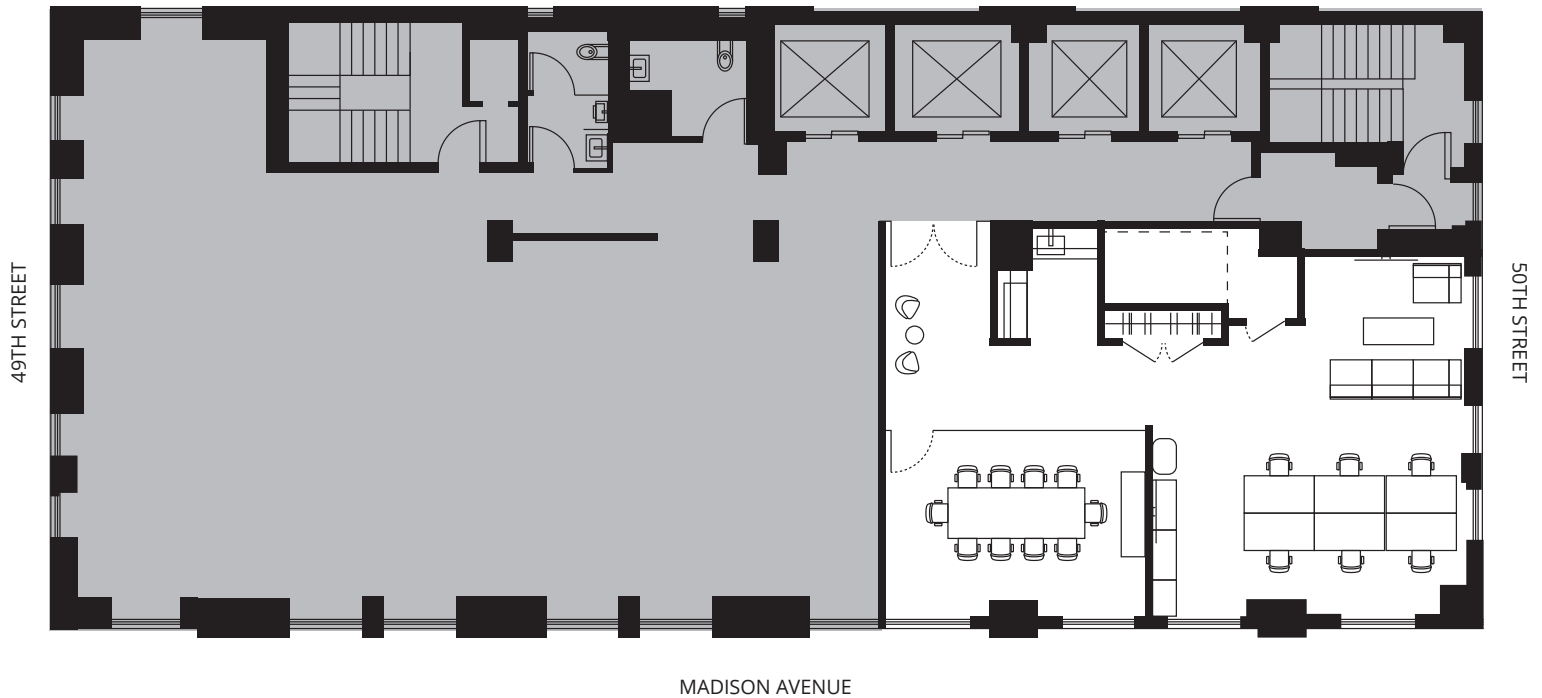
Building Features:

- Spectacular views of Madison Avenue
- New tenant amenity center that features two terraces, conference center and tenant lounge
- Energy Star Labeled
- Property Manager on Site



444 MADISON AVENUE

Between 49th & 50th Streets



Partial 39th Floor: 2,151 SF

