

It's Chelsea. Terrific.

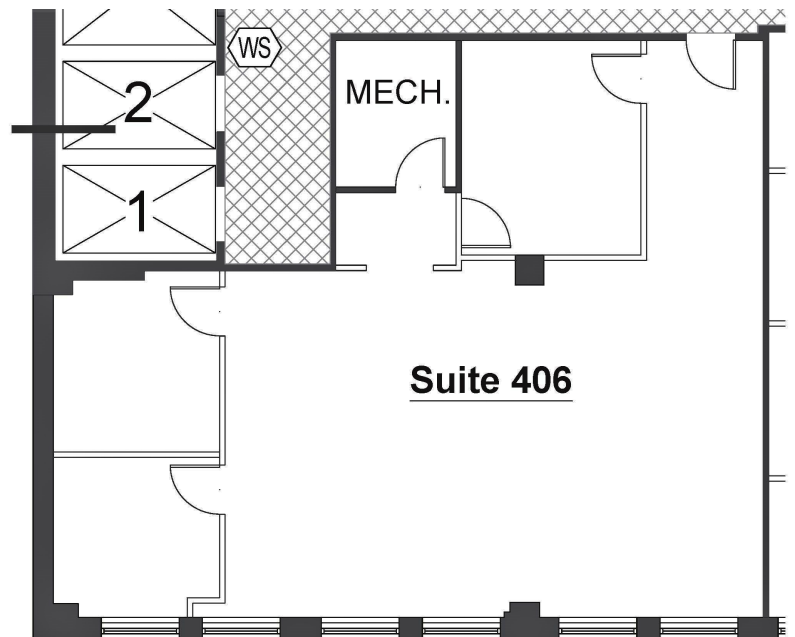
150 West 30th Street (between 6th and 7th Avenues)

Suite 406



Facts

- 2,200 rentable sq ft
- Bright front facing unit
- Conference room, 2 offices, and wet pantry
- Open area furnished with desks
- Concrete floors, open ceiling



About the Property

Gorgeous lobby and upgraded elevators
24 hour/7day Lobby Attendant
Full Staff
6 elevators (4 passenger, 2 freight)
Great Tenant Roster
Just off Seventh Avenue, steps from Penn Station, close to Herald Square Subways and Path



Terms

- Possession: Immediate
- Rent: Negotiable
- Landlord will modify/upgrade
- Electric submetered
- Tenant controlled air cooled a/c