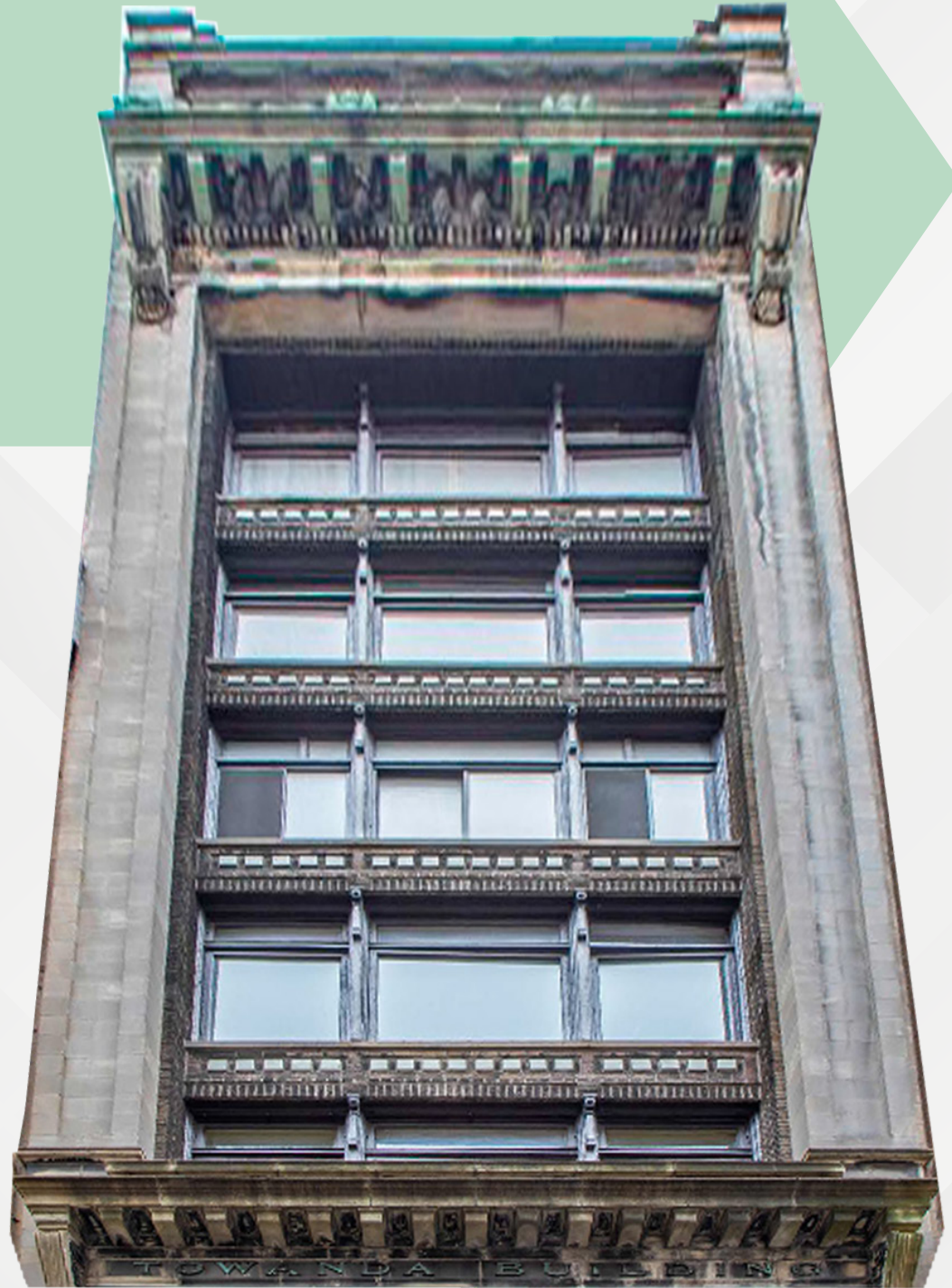


# 377

PARK AVENUE SOUTH

**PRIVATE FULL FLOOR  
OFFICE SPACE AVAILABLE**



## Entire 6 2,400 RSF

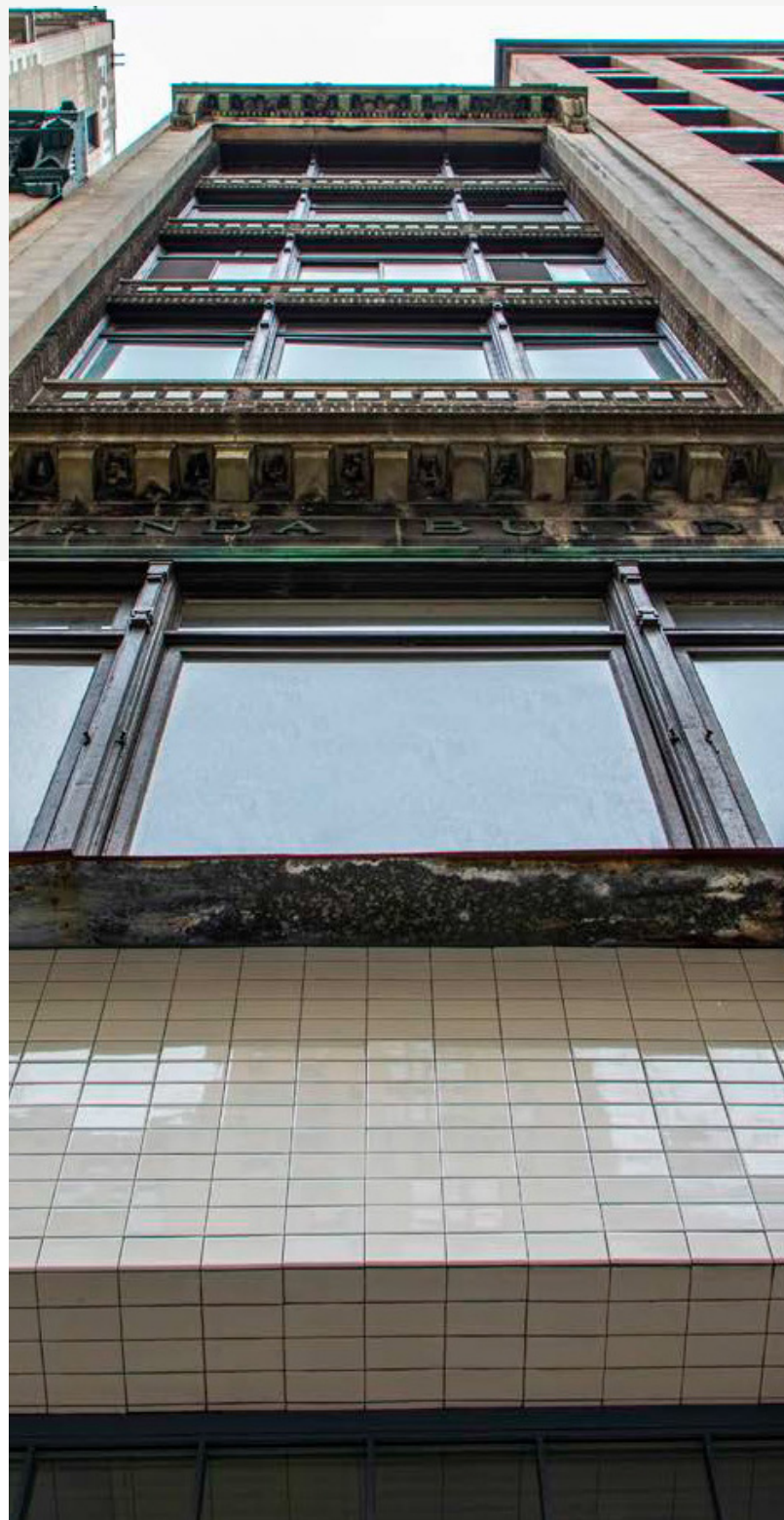
Possession: Immediate  
Term: Negotiable\*

## Entire 7 2,400 RSF

Possession: Immediate  
Term: Negotiable\*

\*Landlord will consider short term transactions

- ▶ **NEW** Keyed / Locking Elevator
- ▶ Move-in ready with mixture of offices, conference rooms and/or open plan
- ▶ **NEW** Large operable windows (3 sides)
- ▶ Tenant controlled **HVAC** on each floor
- ▶ Wet Pantry on each floor
- ▶ 2 private restrooms on each floor
- ▶ Prime Park Avenue South located 1 block from 6 train entrance
- ▶ Low loss factor
- ▶ 24-hour access (unattended lobby)
- ▶ Quiet, low traffic, loft-style building
- ▶ Spectrum class connection





## 6th Floor Photos



Sample Floor (6th)

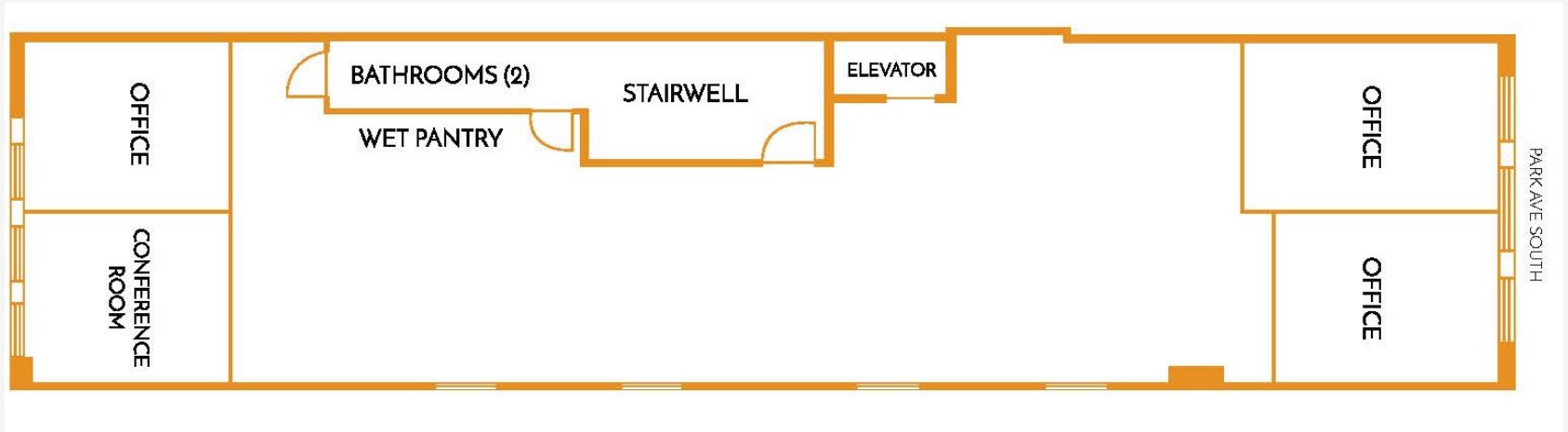


## 7th Floor Photos

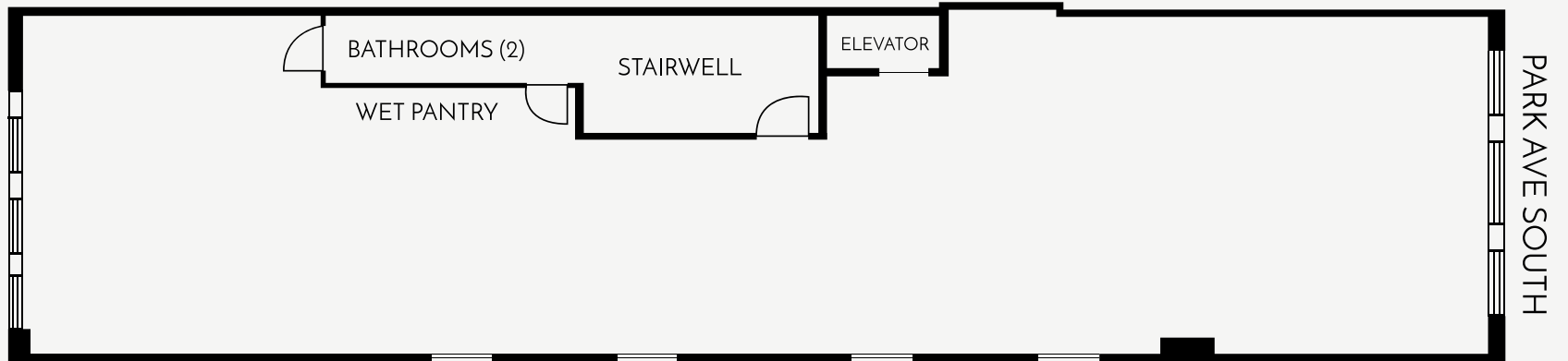


Sample Floor (6th)

E7



E6



377  
PARK AVENUE SOUTH