

# 499 PARK AVENUE



## SUBLEASE AVAILABILITY

<b>Partial 10</b> Floor	<b>2,445 RSF</b> Size	<b>Through March 2027</b> Term	<b>Immediate</b> Possession
----------------------------	--------------------------	-----------------------------------	--------------------------------

- **Boutique, Trophy Asset**
- **Existing, Trading Installation**
- **Overlooks Park Avenue**
- **Delivered Furnished & Wired**

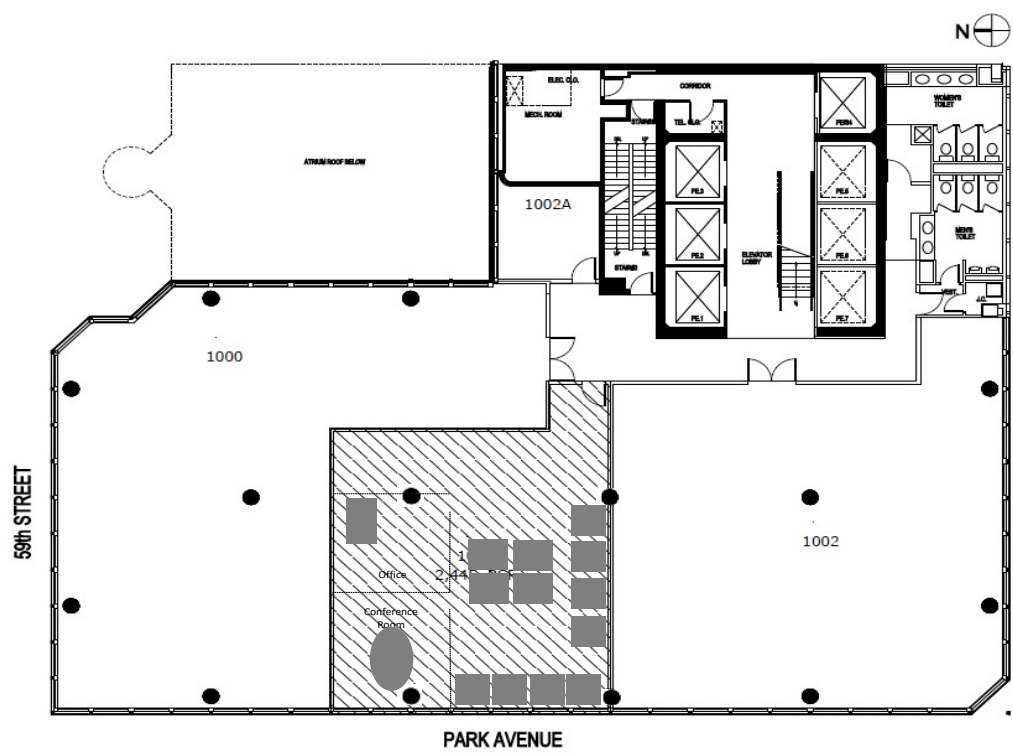


Partial 10<sup>th</sup> Floor | 2,445 RSF

Layout

- One (1) Office
- One (1) Conference Room
- Twelve (12) Workstations
- One (1) Pantry

499 Park Avenue Sublease





# Space Photos

