

215

MADISON AVENUE

MURRAY HILL, NYC

Corner of Madison Avenue & East 36th Street

MEDICAL FOR LEASE

APPROXIMATE SIZE

Ground Floor: 2,455 SF

ASKING RENT

\$15,500/Month

POSSESSION

Immediate

TERM

Negotiable

FRONTAGE

50+ FT

COMMENTS

- Built-out corner medical space
- Motivated landlord with flexible terms
- Highly visible corner with tons of exposure on Madison Avenue
- Centrally located to all major transportation systems

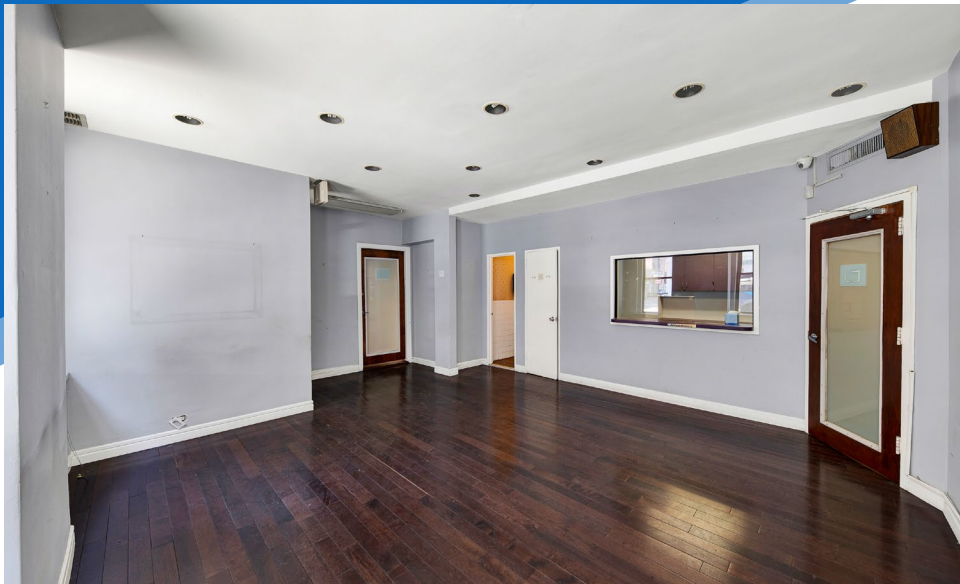
NEIGHBORS

The Empire State Building • Chopt • The Ainsworth • Murray Hill Diner • Unregular Pizza • Serafina • Mad Dog • Ai Fiori • American Eagle • Lifetime Fitness

TRANSPORTATION

B D F M N Q R 6





MURRAY HILL, NYC | Corner of Madison Avenue and East 36th Street

MEDICAL FOR LEASE

FLOOR PLAN



ENTRANCE ON MADISON AVENUE

215 MADISON AVENUE
MURRAY HILL, NYC | Corner of Madison Avenue and East 36th Street

MEDICAL FOR LEASE

BRYANT PARK

W 40TH STREET



W 39TH STREET



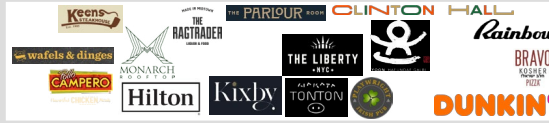
W 38TH STREET



W 37TH STREET



W 36TH STREET



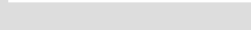
W 35TH STREET



W 34TH STREET



W 33RD STREET



E 40TH STREET



E 39TH STREET



E 38TH STREET



E 37TH STREET



E 36TH STREET



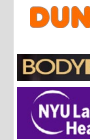
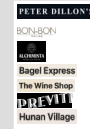
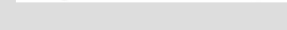
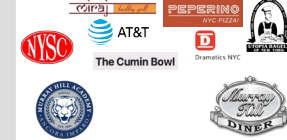
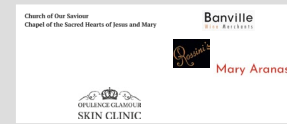
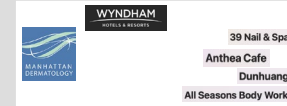
E 35TH STREET



E 34TH STREET



E 33RD STREET



215
MADISON
AVENUE

NEIGHBORS

SIXTH AVENUE

FIFTH AVENUE

MADISON AVENUE

PARK AVENUE

LEXINGTON AVENUE

BROADWAY