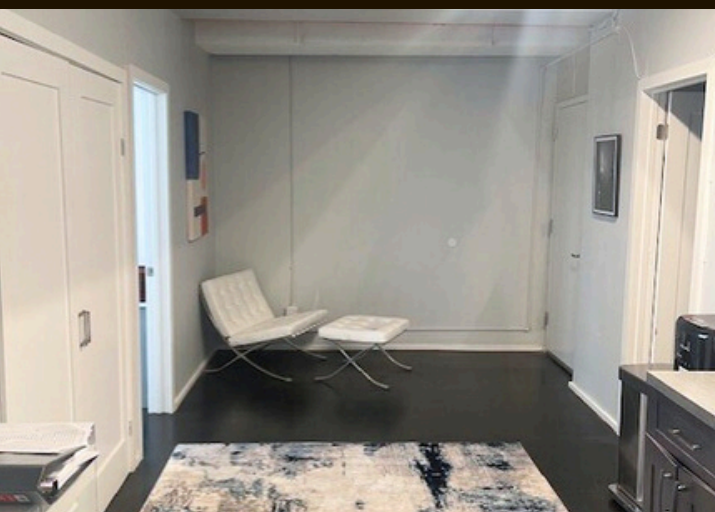
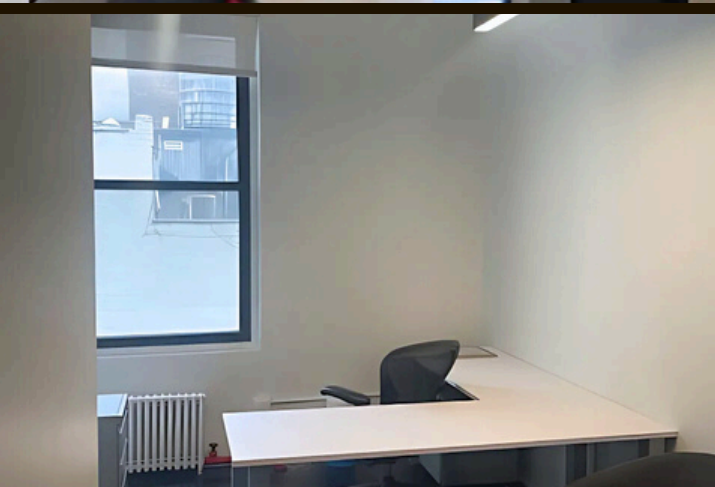




# 16 WEST 36TH STREET

Located between 5th and 6th  
Avenue





### **Unit Available:**

- Suite 902

### **Possession:**

- February 1, 2025

### **Size:**

- 2,467 SF

### **Asking Rent:**

- Upon Request

### **Space Highlights:**

- Exposed Ceilings
- LED lights
- 7 offices
- Pantry area
- Storage closet
- Abundant natural light
- South & East facing views

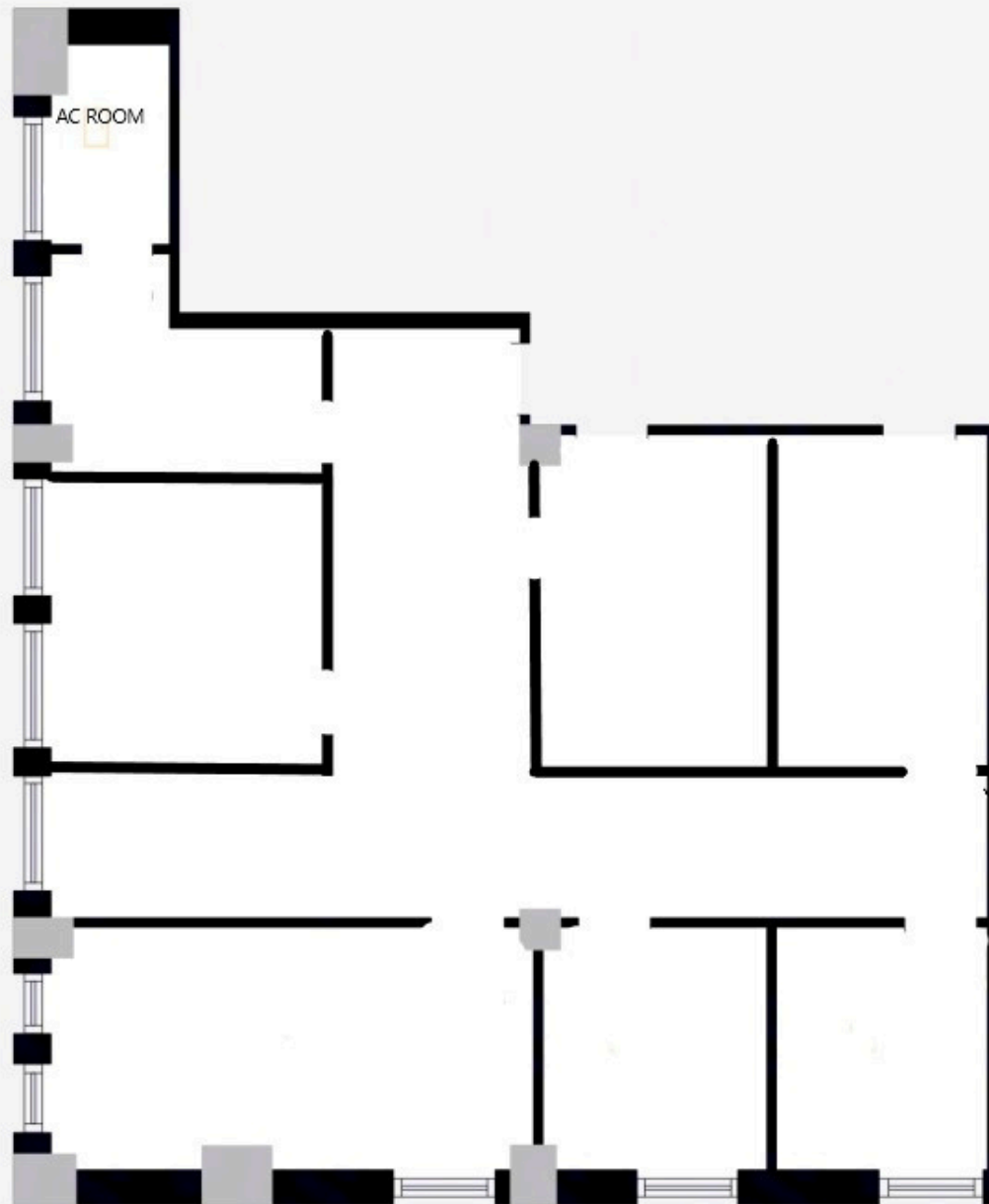
### **Ideal for:**

- Psychotherapy
- Wellness/ Acupuncture
- Law firms

### **Building features:**

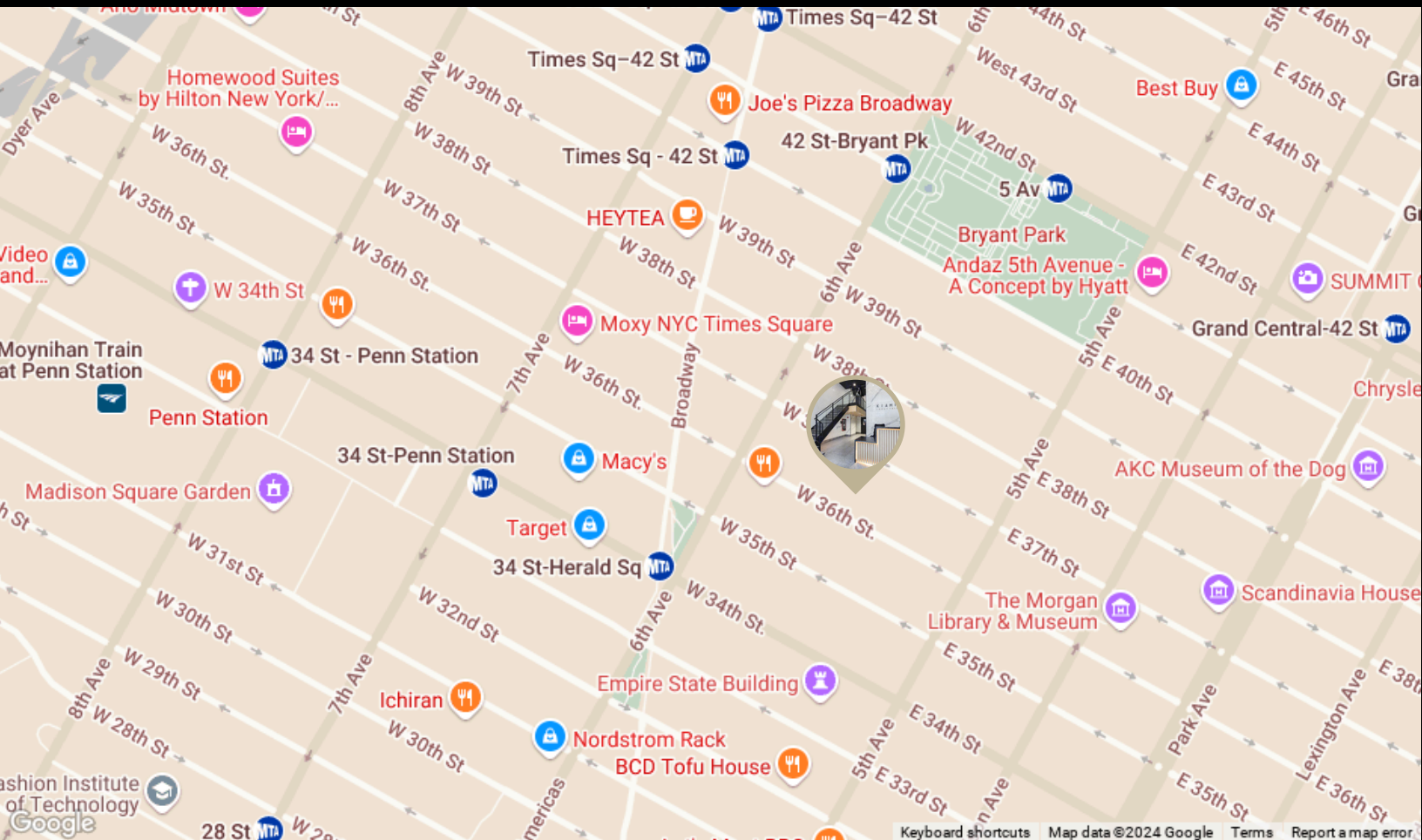
- Brand new lobby
- Renovated 9th floor corridor
- 24/7 building access

# Floor Plan





# Area Map



## Transportation Nearby Trains

