

900 Broadway

Flatiron, New York

Southwest corner of 20th Street

Building Overview

Located in the vibrant NoHo neighborhood, 900 Broadway is a distinguished mixed-use building offering a blend of historic charm and modern convenience. The property features versatile retail and office spaces, with the popular Italian restaurant [Barlume](#) occupying its retail space, adding a touch of culinary excellence to the address. Next door at 902 Broadway, the renowned [Aqua](#), an exceptional restaurant known for its exquisite dining experience, further enhances the area's appeal, creating a dynamic and upscale atmosphere. Situated steps from iconic shopping, dining, and cultural attractions, the building is also highly accessible, with nearby subway lines including the N, R, W, 6, and B, D, F, M, providing seamless transportation across New York City.

Building Highlights

- 10-story, 100,000 SF office building
- Blocks from Union Square Station
- Some of the best restaurants/bars located nearby
- Tenant controlled A/C
- Lobby updated in 2021

Lease Term

Negotiable



Retail – Barlume

[Barlume](#) celebrated its ribbon-cutting in December 2024, bringing a refined all-day destination to 900 Broadway. Whether you're stopping by for a quick cup of coffee, gathering for a team dinner, or unwinding with a late-night cocktail, Barlume seamlessly complements the vibrant energy of this iconic location.

Serving breakfast, lunch, and dinner, it seamlessly blends classic elegance with modern sophistication.

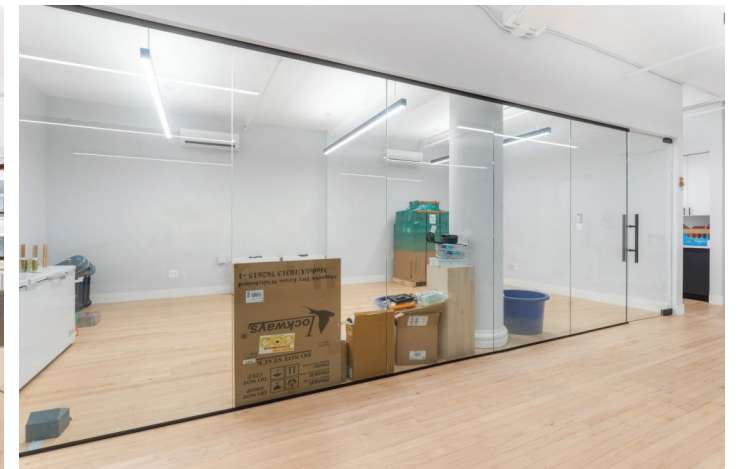
From expertly crafted morning brews to signature cocktails in the evening, Barlume offers an elevated dining experience complemented by warm hospitality and an intimate setting that invites conversation and connection.



Space Description

This amazing 7th floor space presents a amazing finishes and faces 20th street. Alongside the high-end design this space gets bathed with light from the northern exposures

As built, the space features (1) office / meeting rooms, (1) conference room, an ample open layout for 20 workstations, a wet pantry and lounge area.



Floor Plan

\$16,000 / Month

900 Broadway

Partial 7th Floor
2,493 SF

Open Seating

Workstations	20
Reception Area	1

Collaboration Space

Office/Meeting Rooms	1
Conference Rooms	1

Support

Wet Pantry	1
------------	---

