



PENPLACE

224 WEST 35TH STREET



PENN PLACE

224 WEST 35TH STREET

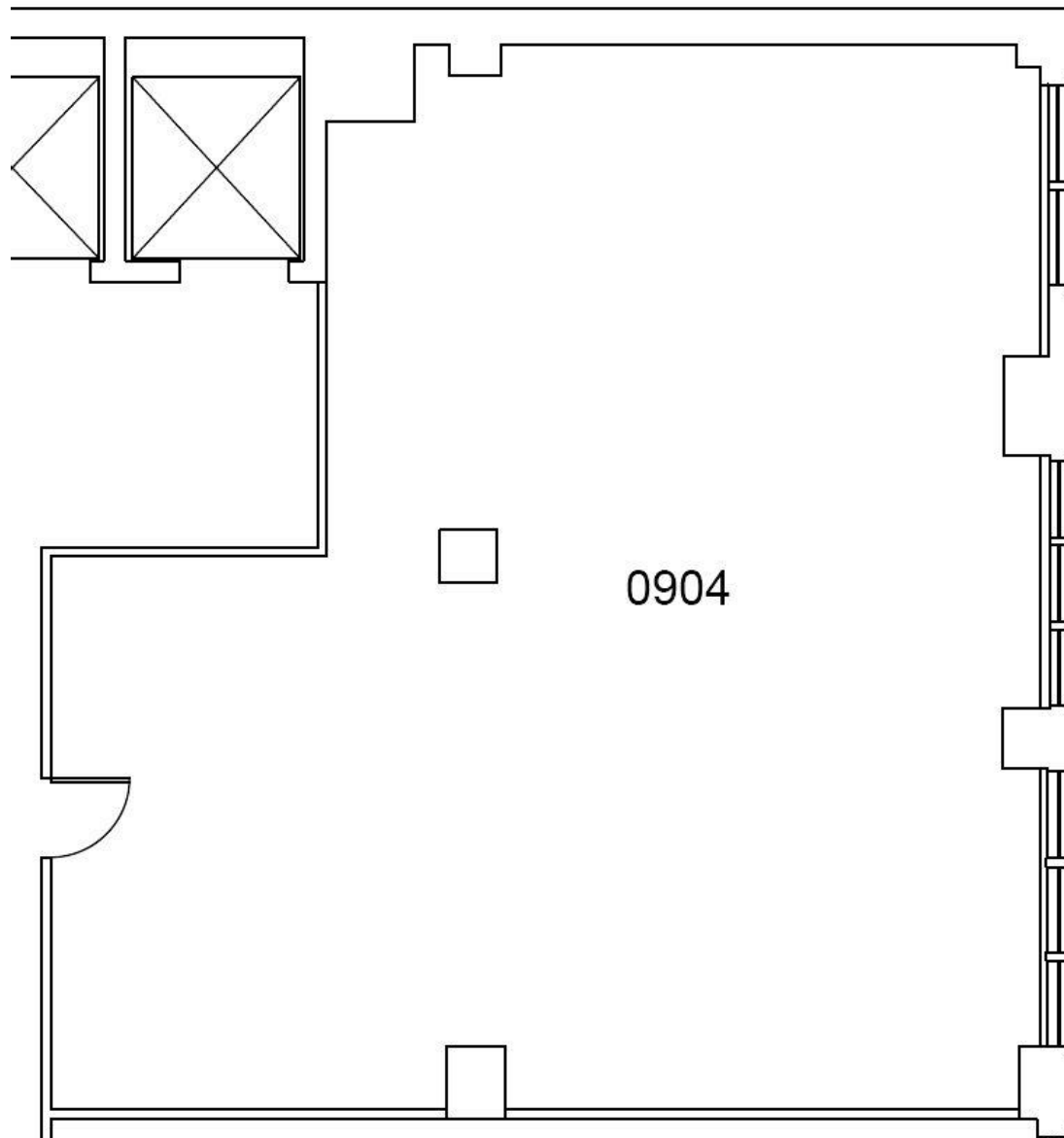
ABOUT THE BUILDING

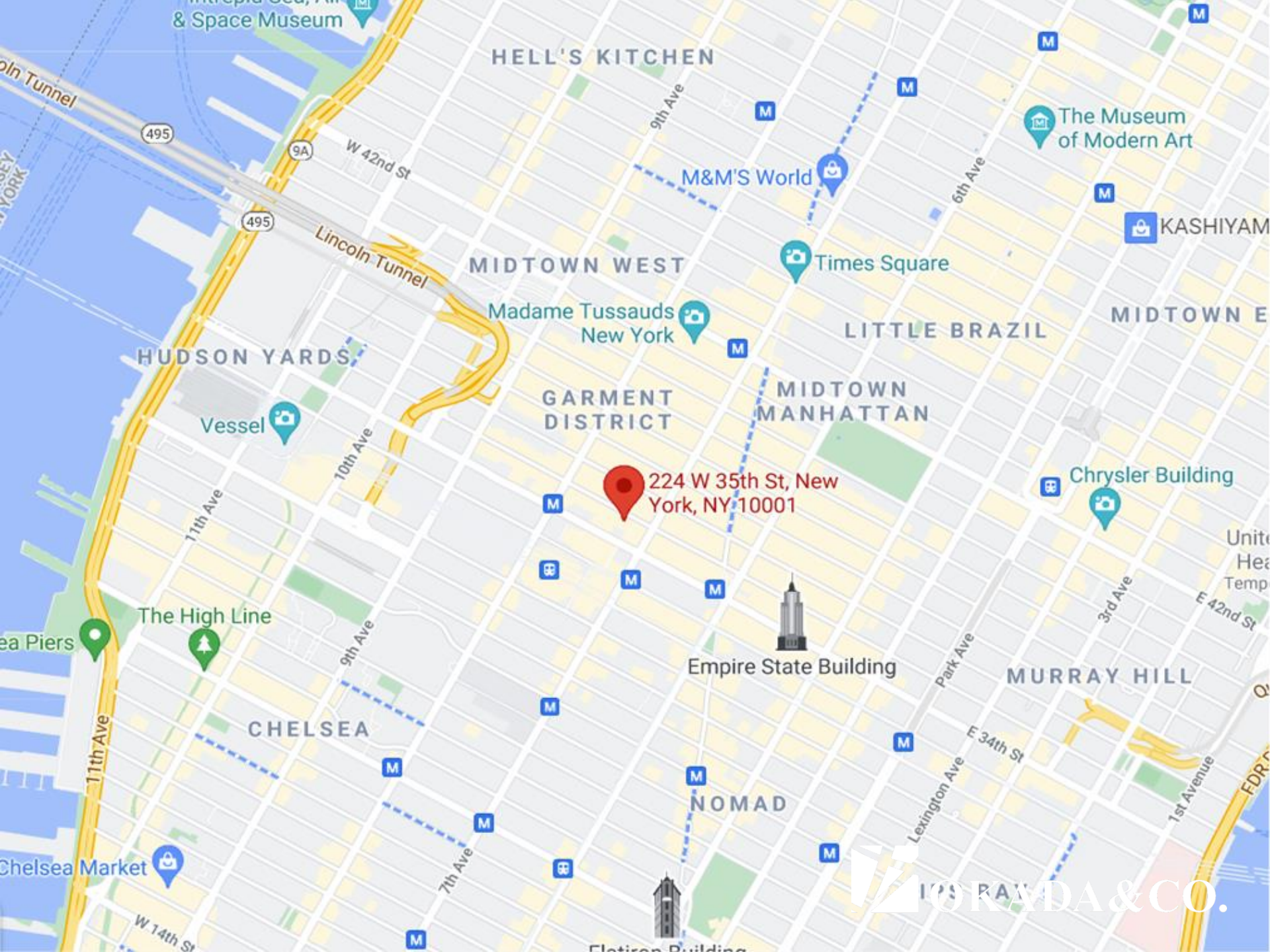
- Major capital Improvement project recently completed
 - Full-Time Doorman Lobby
- 7:00am ~ 10:00pm Weekdays
- 7:00am ~ 7:00pm Weekends
- 24/7 Keycard access
- 3 Passenger & 2 Freight Elevators
- Efficient side-core floorplate.
- Landlord can build to suit
- Spaces range from 500 SF to 11,000 SF
- Excellent access to public transportation ideally located in close proximity to multiple subway lines and Penn Station.

AVAILABILITY

Space:	Suite 904
Size:	2,500 SF
Rent:	\$6,250/month (\$30/ft)
Additional Expenses:	Water: \$60/mo, Sprinkler: \$60/mo, Security: \$95/mo
Electricity:	\$3.25/SF/Year
Term:	3 ~ 10 Years
Property Tax:	Proportionate Share of Increases
Possession:	Immediate
Description:	<ul style="list-style-type: none">• Reception & waiting area• Large open area• One office and a storage room• Windows facing the street







224 W 35th St, New
York, NY 10001