



252 W 37TH STREET, PENTHOUSE

Between 7th and 8th Avenues
Midtown, NYC

OFFICE SPACE FOR LEASE

SIZE

2,500 SF

CEILING HEIGHT

11'

RENT

\$29 PSF

TERM

5-10 years

POSSESSION

Immediate

POSSESSION

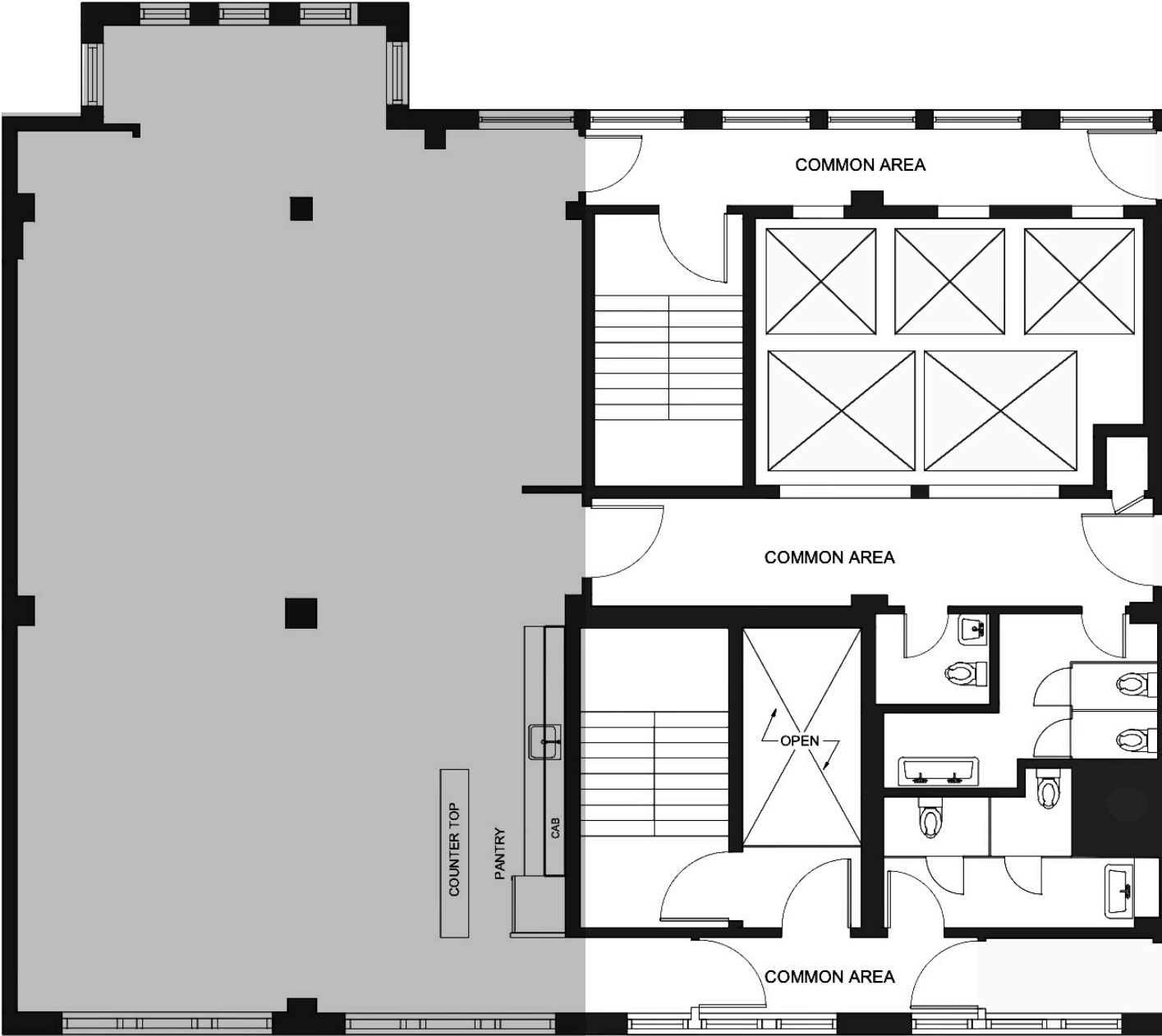
Immediate

HIGHLIGHTS

- Excellent natural light
- Wet pantry
- Central air conditioning

NEIGHBORHOOD TENANTS

Penn Station, Port Authority, Starbucks, Le Cafe Coffee
Pret A Manger, Chase, Bank of America, TD Bank

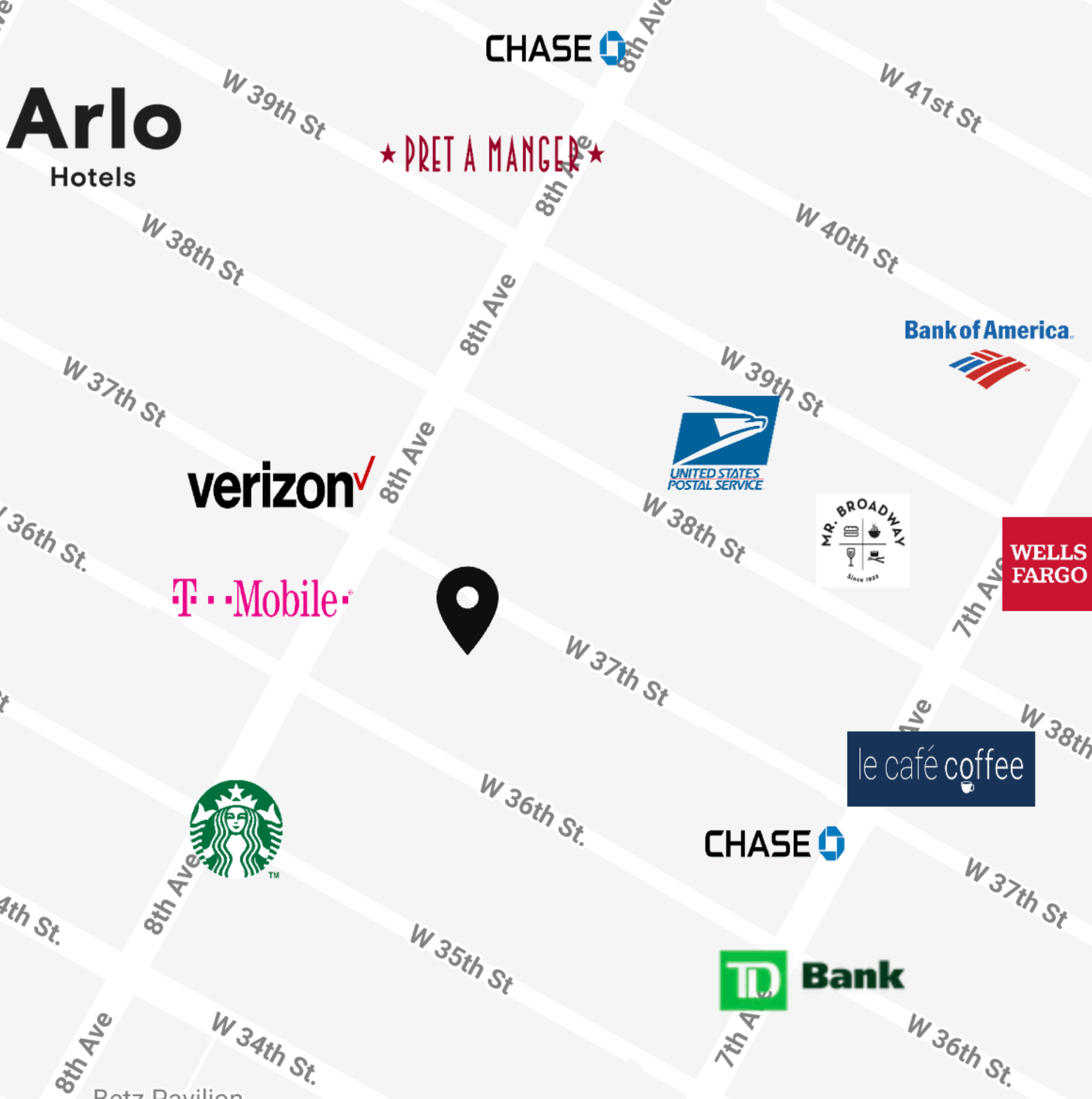




An attended lobby featuring a modern design and a professional staff, creating a welcoming and sophisticated atmosphere.



An open-concept with high ceilings and central air conditioning for a spacious and comfortable environment.



Located in the lively and energetic heart of Midtown, with immediate access to local hotspots.