



37 West 39th Street
Between 5th and 6th Avenues

Direct Lease

Floor
Partial 3rd Floor

Size
2,500 SF

Availability
Immediate

Rental
Upon Request

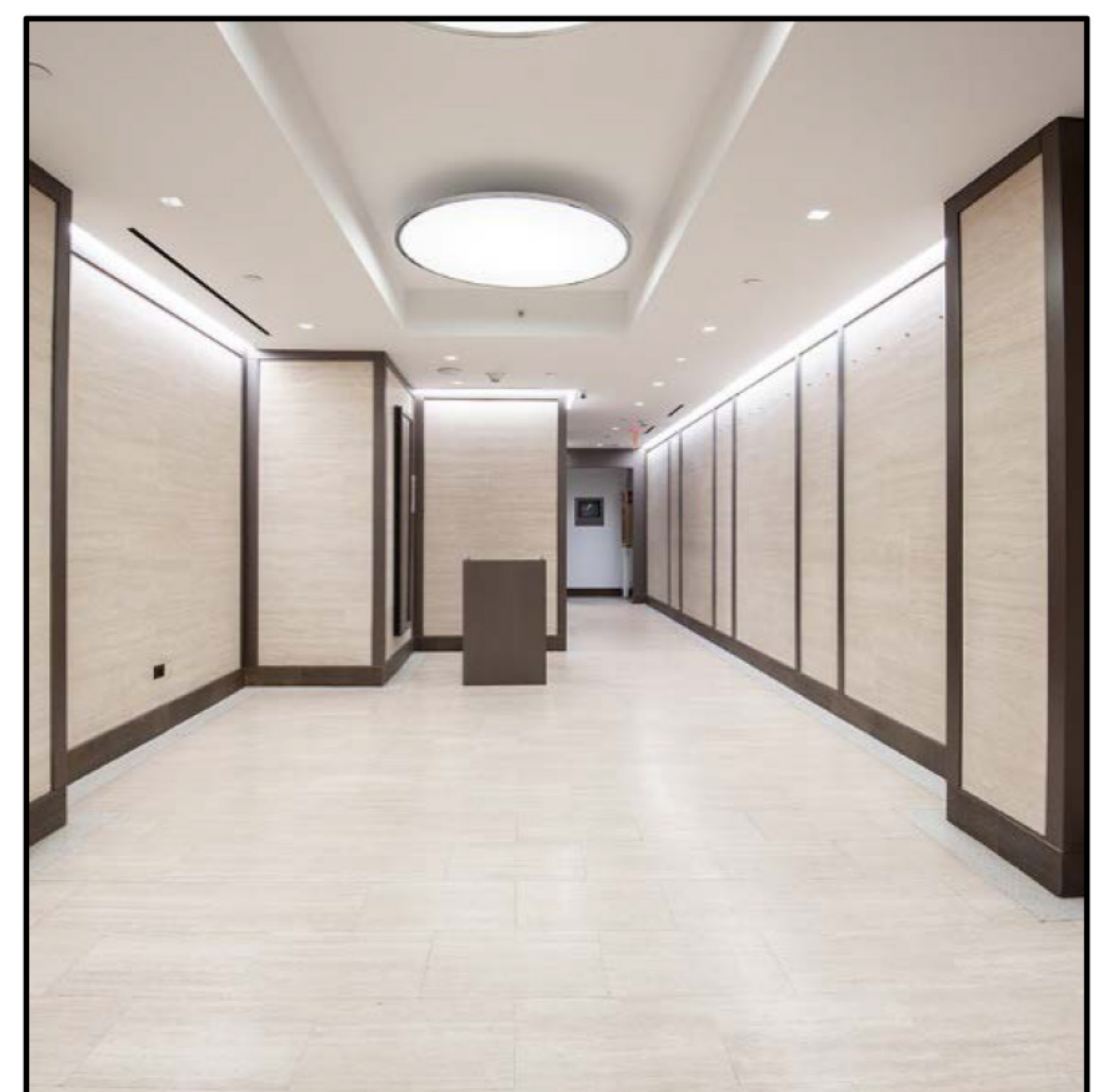


SPACE FEATURES

- 3 private offices, 1 large conference room, wet pantry w/ microwave, dishwasher, and refrigerator
- Open area for 14 +
- Above standard installation
- South facing windows overlooking 39th Street
- Great natural light
- Move-In ready
- Delivered furnished and wired
- Plug and Play space

BUILDING FEATURES

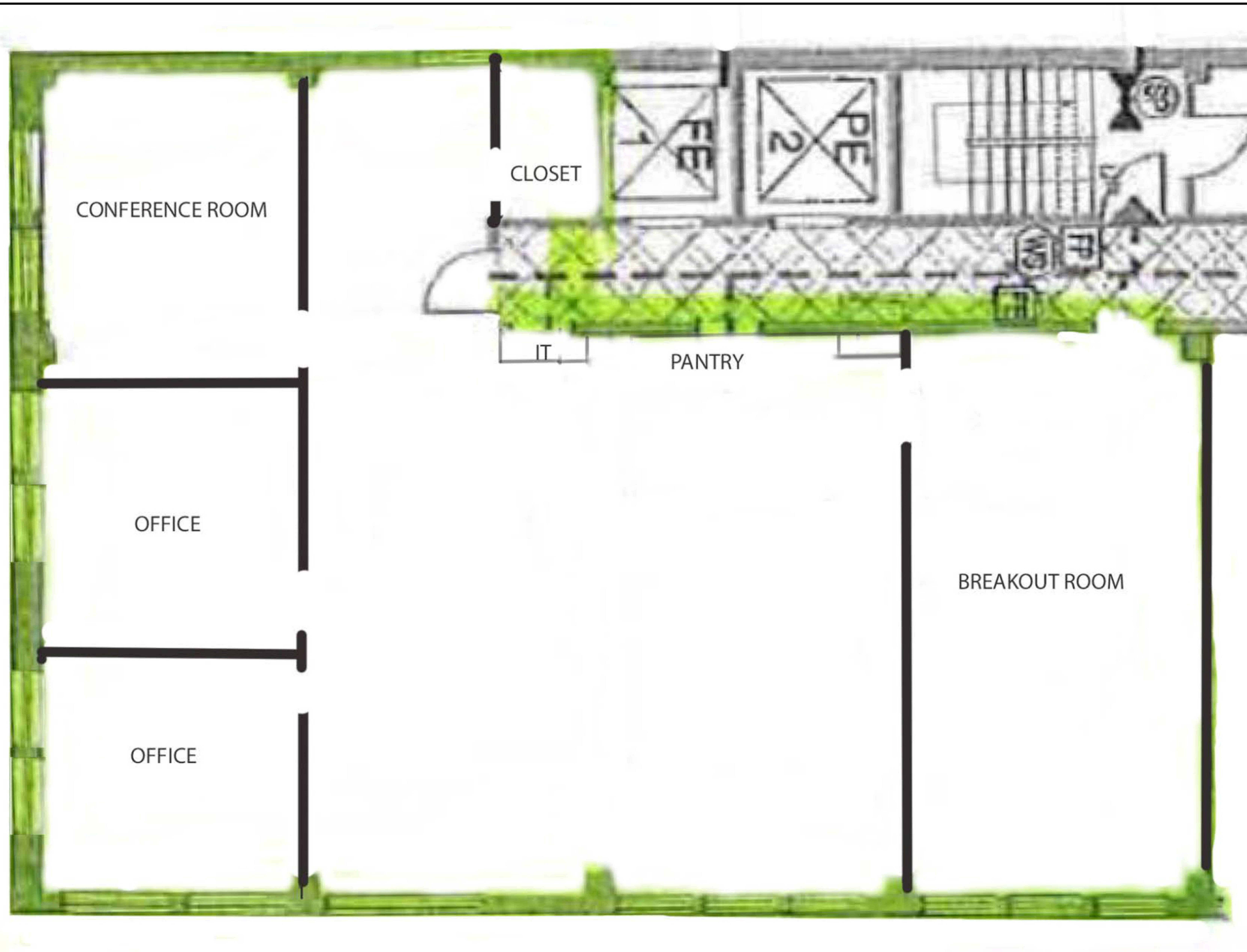
- 24/7 Building Access
- Lobby attended Monday thru Saturday
- One block from Bryant Park and all major subway lines



37 West 39th Street

Between 5th and 6th Avenues

Floor Plan



37 West 39th Street

Between 5th and 6th Avenues

