

544 West 27th Street

WEST CHELSEA/HUDSON YARDS
NEW YORK, NY



544 WEST 27TH STREET

Property Details

Location

South block between Tenth Avenue and Eleventh Avenue

Approximate Size

Third Floor 2,500 SF

Term

Negotiable

Possession

Immediate

Neighbors

Marquee New York, The Mckittrick Hotel, Queensyard, Electric Lemon, Chelsea Factory, Porchlight, Mermaid Inn, Gagosian Gallery, Pace Gallery, Cucina Alba, Lisson Gallery, Lisson Gallery, Unix, Cookshop, Commes De Garcon, Dia Art Foundation and Starbucks Reserve

Comments

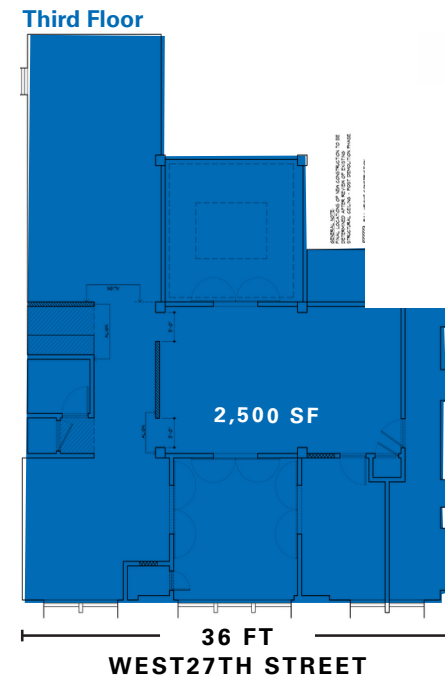
Loft spaces

Natural light on three sides

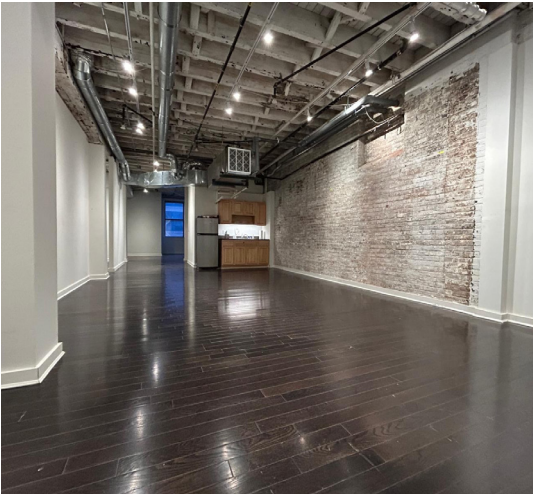
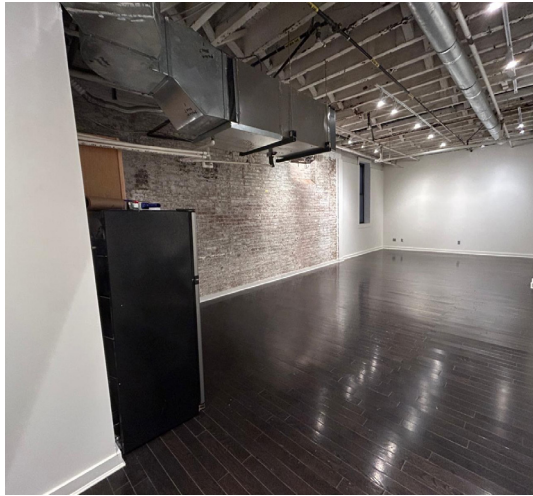
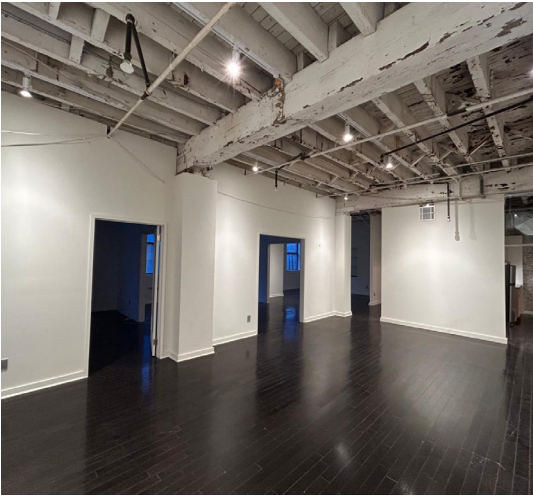
Elevator building with 24-hour buzzer access

Distinctive spaces with hardwood floors

Third Floor has a pantry and a private bathroom



Third Floor Interior Photos



544 W 27TH STREET



©2025 NEWMARK Licensed in New York as Newmark Retail, Real Estate Broker

The information contained herein has been obtained from sources deemed reliable but has not been verified and no guarantee, warranty or representation, either express or implied, is made with respect to such information. Terms of sale or lease and availability are subject to change or withdrawal without notice.