

667 MADISON AVENUE

High-End, Short-Term
Sublease Available



PARTIAL 15TH FLOOR 2,500 RSF

POSSESSION:

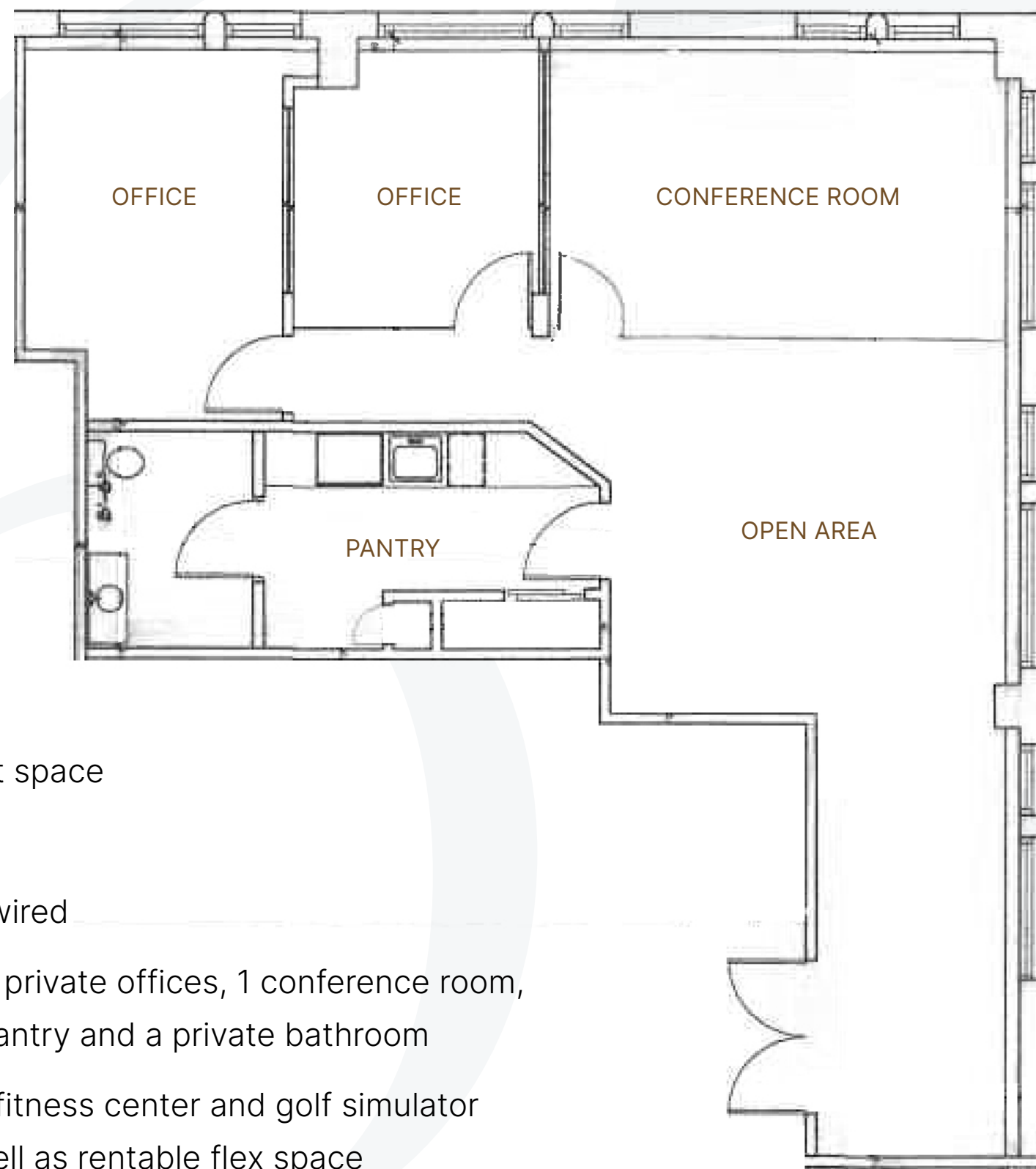
Immediate

TERM:

Flexible (2-3 Years)

COMMENTS:

- High-end newly built space
- Central Park views
- Fully furnished and wired
- Layout consists of 2 private offices, 1 conference room, small open area, a pantry and a private bathroom
- Amenities include a fitness center and golf simulator in the building, as well as rentable flex space





667 MADISON AVENUE

