

450

SEVENTH
AVENUE



HIGH-END SUITE ON FASHION AVENUE

SPACE
SUITE 403

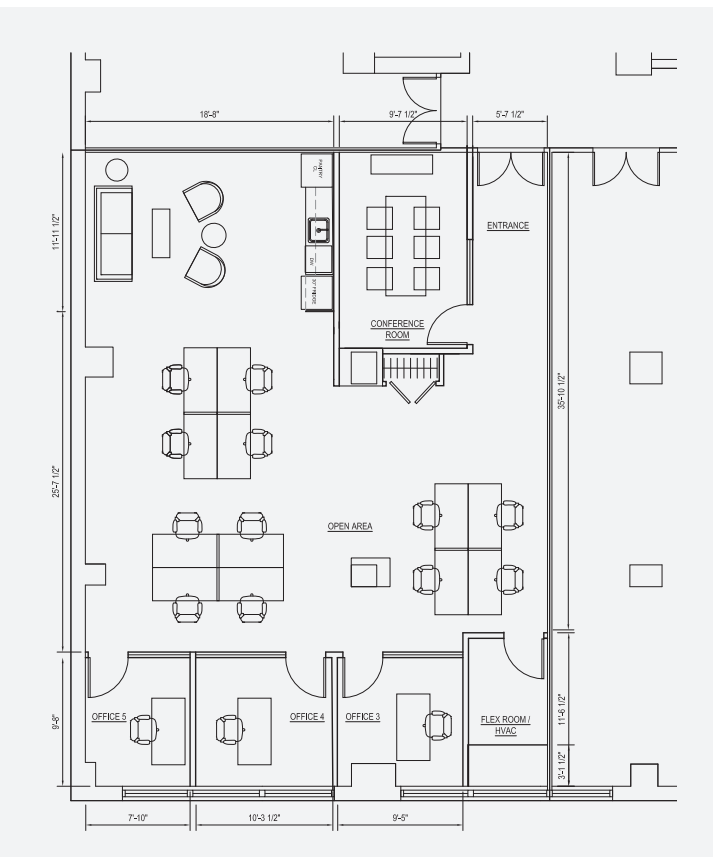
RENT
INQUIRE

SIZE
2,588 SF

TERM
NEGOTIABLE

SPACE DETAILS

- BRIGHT, OPEN WORK SPACE
- GLASS-FINISHED OFFICES & MEETING ROOM
- OPEN CAFE STYLE PANTRY
- 24/7 BUILDING ACCESS
- TENANT CONTROLLED A/C





ABOUT THE BUILDING

Nelson Tower finds itself at the crossroads of transportation and history.

Standing 46-stories high in the heart of the Garment District, 450 Seventh Avenue is highly connected to major subway and bus lines, Penn Station, Port Authority, and Grand Central.

Nelson Tower is a fully renovated office building, catering to tenants of all sizes in search of a modern office solution with multi-generational, stable ownership.

