

# 320

**EAST 39<sup>TH</sup> STREET**  
MURRAY HILL, NYC

Between First & Second Avenues

RETAIL/OFFICE FOR LEASE

#### APPROXIMATE SIZE

3<sup>rd</sup> Floor: 2,615 SF

#### ASKING RENT

\$11,000/Month

#### POSSESSION

Immediate

#### TERM

Negotiable

#### COMMENTS

- Built-out office on third floor available
- 9 offices with conference room and 2 private bathrooms
- Tons of natural light flowing into the space
- Dividing walls can easily be taken down to open the space for open concept
- All uses considered

#### NEIGHBORS

Gristedes • Duane Reade • Dunkin' • Abitino's  
Pizza • Starbucks • New York Sports Club • The Yoga  
Common • Ground Central • El Pote • Chase Bank

#### TRANSPORTATION

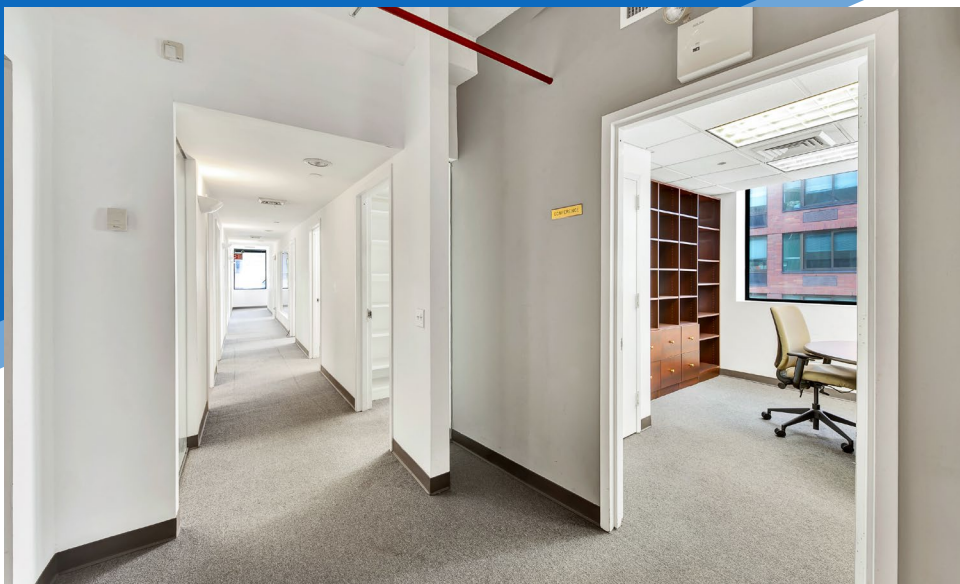
4 5 6 7 S



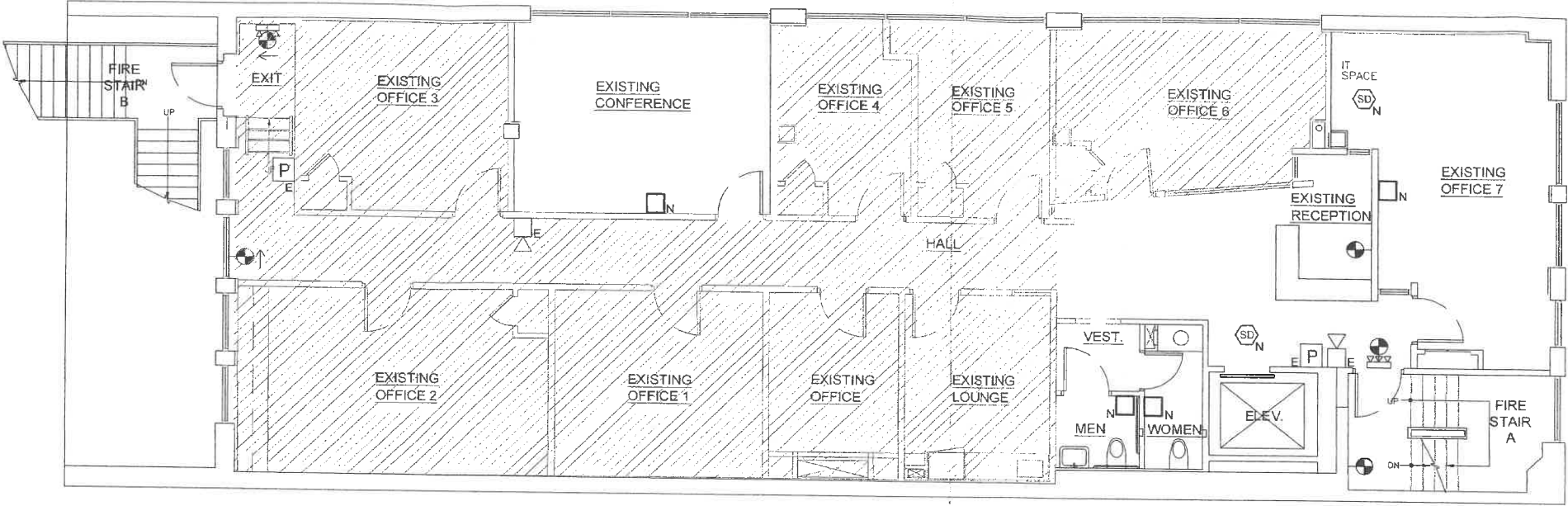


320 EAST 39<sup>TH</sup> STREET  
MURRAY HILL, NYC | Between First and Second Avenues

RETAIL/OFFICE FOR LEASE



INTERIOR



320 EAST 39<sup>TH</sup> STREET  
MURRAY HILL, NYC | Between First and Second Avenues

RETAIL/OFFICE FOR LEASE

NEIGHBORS

