

370

LEXINGTON
AVENUE

SUBLEASE
AVAILABLE

— ONE BLOCK FROM —
GRAND CENTRAL STATION

FLOOR | PARTIAL 18TH FLOOR

SIZE | 2,627 RENTABLE SQUARE FEET

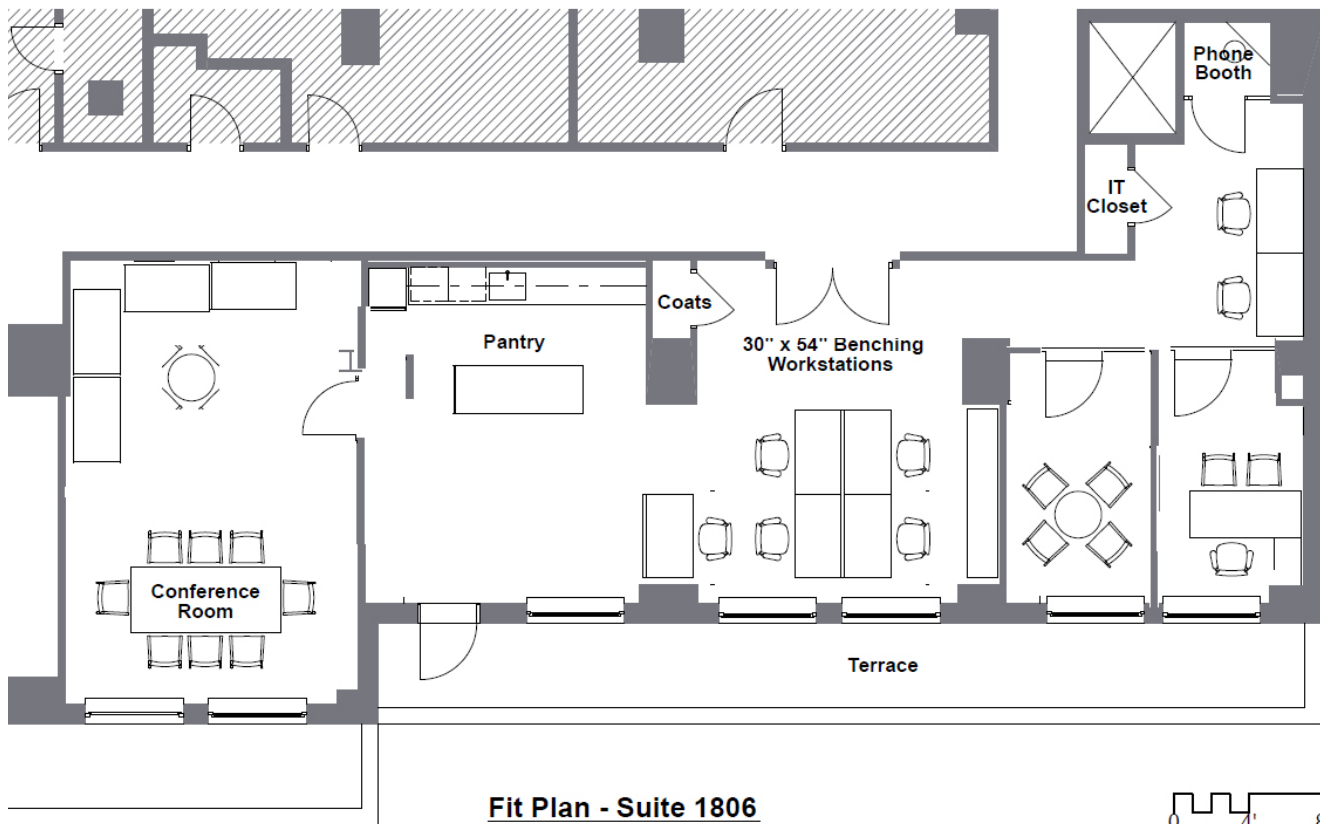
TERM | THROUGH JULY 2028



CURRENTLY BUILT WITH 2 GLASS OFFICES,
1 CONFERENCE ROOM, 1 PHONE BOOTH

SMALL PRIVATE OUTDOOR SPACE INCLUDED,
FULLY FURNISHED





Fit Plan - Suite 1806

Note: All Conditions and Dimensions are Subject to Field Verification

