

Partial 8th Floor - Sublease
420 Lexington Avenue - Graybar Building
New York, NY 10170



420 Lexington

aka Graybar Building Sublease 2,734 rsf

Availability

Partial 8th floor 2,734 rsf

Possession

September 1, 2025

Rate

Upon request

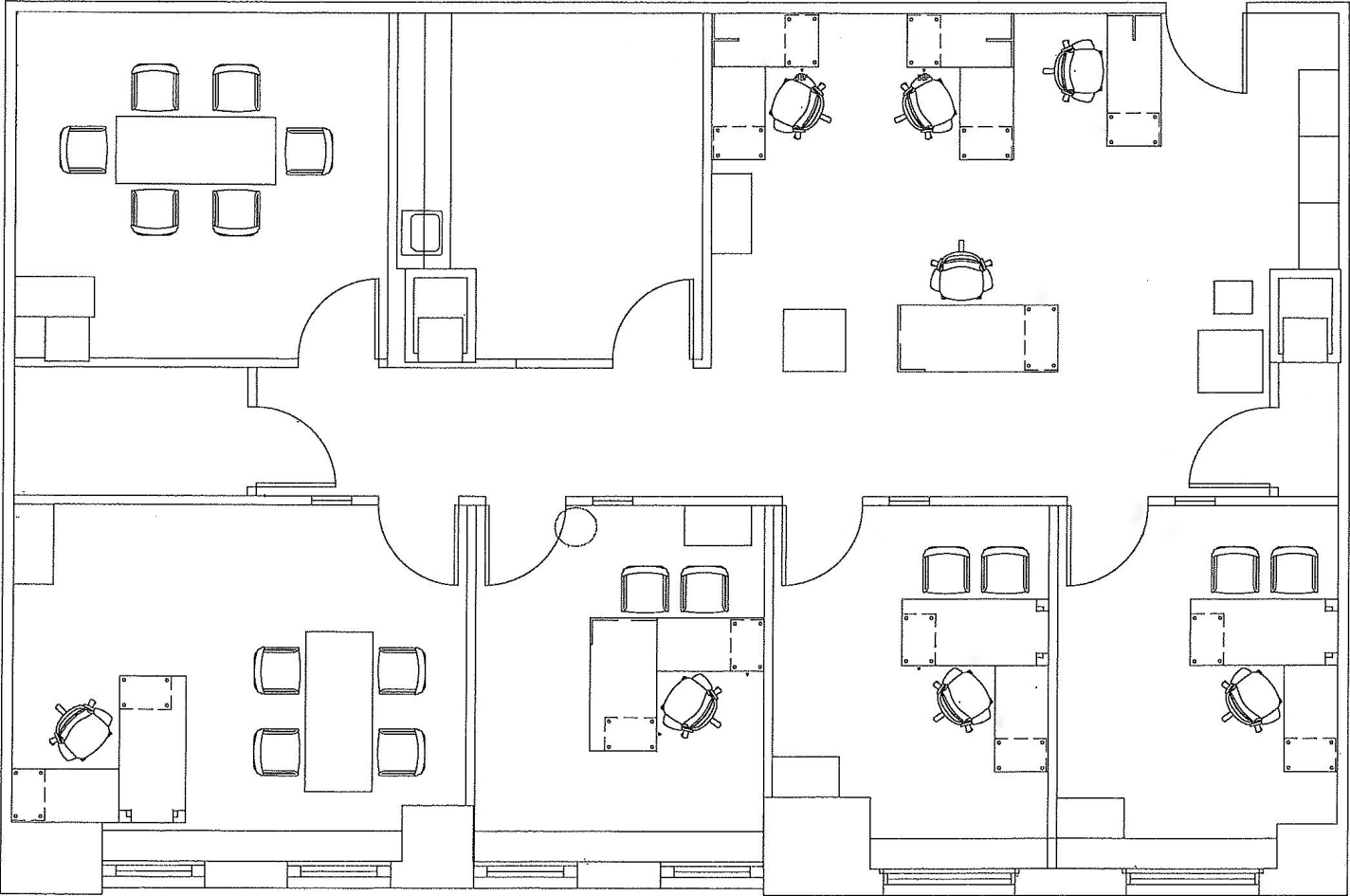
Term

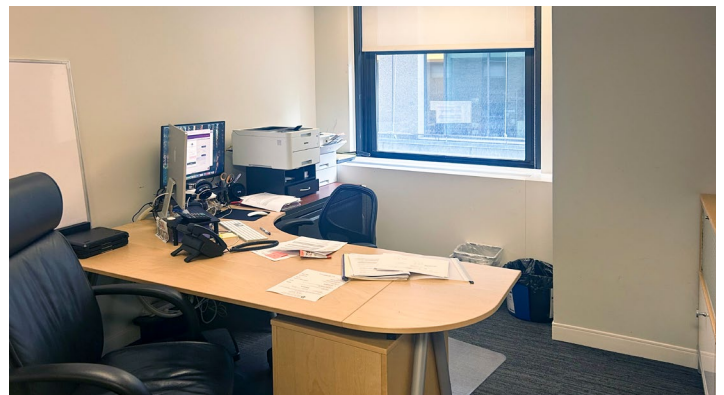
October 2026

Space highlights

- Second-generation space in prime location with direct access to Grand Central Terminal
- Fully furnished sublease featuring a conference room, executive office, 3 offices, open area and pantry

Partial 8th Floor - 2,734 rsf





Partial 8th Floor - Sublease

420 Lexington Avenue, New York, NY 10170

Building and select area highlights

- Located near the following:



- Multiple Citi Bike locations
- 24-hour access
- Fitness center
- Bicycle storage
- Property manager on-site
- Numerous retail and restaurants onsite and within Grand Central Terminal
- Security system

