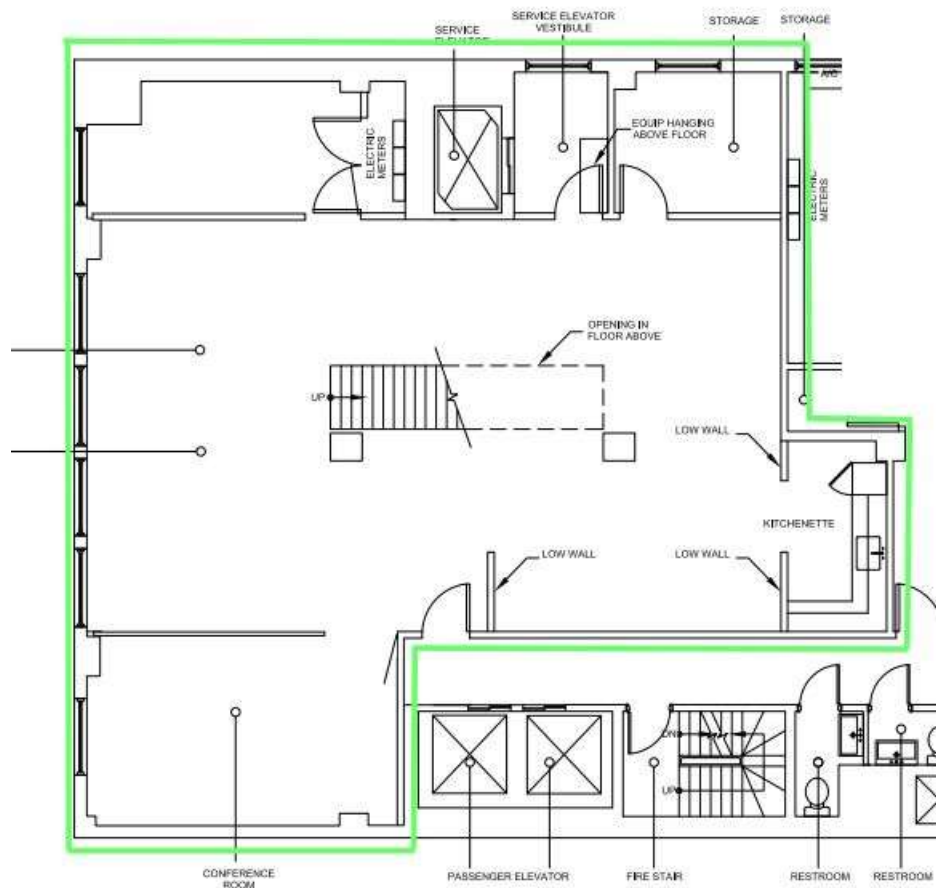


## 135 West 26 Street - Suite 8A - 2,800 SF

•Move-in ready •Fully furnished and fully built with two offices and one conference room •Wet pantry •Hardwood floors •High ceilings •Direct electric •Water/sprinkler \$75/\$45 per month •Tech. fee \$20/mo. •Term 3-5 years •Annual escalations 3% •Trash extra •Prop. share of RE Taxes over Base Year

### Floor Plan



## Photos

