



OFFICE OPPORTUNITIES

416 WEST 13TH STREET

MEATPACKING DISTRICT  
NEW YORK CITY







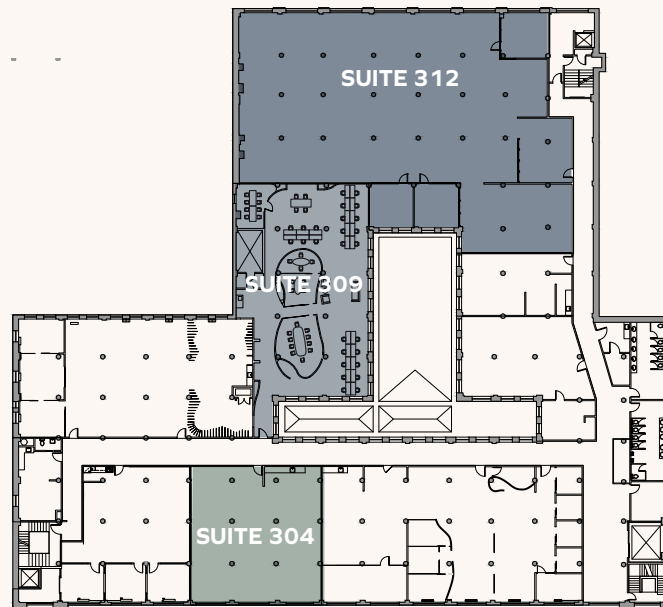
## 416 WEST 13TH STREET



416 West 13th Street is a distinguished, neoclassical commercial building situated between Ninth Avenue and Washington Street, boasting 144,000 sf of sun-drenched office and retail spaces in the heart of the iconic Meatpacking District. Once home to the renowned publishing house P.F. Collier & Son, the landmarked property underwent a massive renovation in 2012 to

convert it into a striking boutique office building with ground floor retail that opens onto the picturesque cobblestone streets on both the north and south sides. The modernized lobby, windows and façade preserve the building's architectural charm and industrial allure, with added amenities to include a tenant-only conferencing center and lounge space.

## Third Floor



### Current Availabilities

Suite 304	2,904 RSF
Suite 309	4,076 RSF
Suite 312	11,500 RSF

\* Spaces are divisible

### Possession

Immediate

### Term

Negotiable

### Ceiling Heights

11'6" - 15' (Slab-to-slab)

### Rates

Upon request

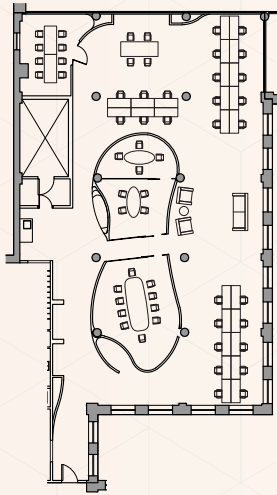


Suite 207



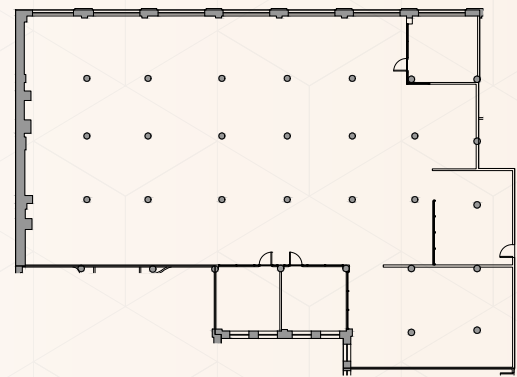
Suite 203





#### **SUITE 309 / 4,076 RSF**

- Built space featuring 1 large conference room, 3 medium conference rooms, open area seating for 26-28, pantry, multiple open collaboration spaces, and a reception area.
- Finished with exposed brick, concrete floors and 11'6" ceilings.
- Fully furnished, wired and available for immediate occupancy.



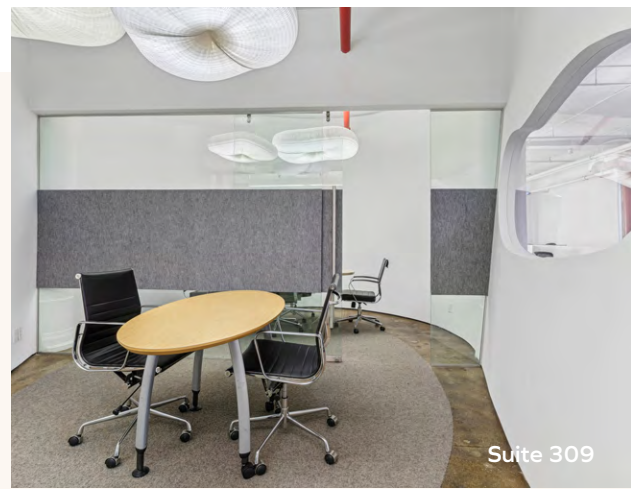
#### **SUITE 312 / 11,500 RSF**

- Built space featuring 3 medium conference rooms, large open area, pantry, and a reception area.
- Finished with exposed brick, multiple skylights, concrete floors and 11'6" ceilings.

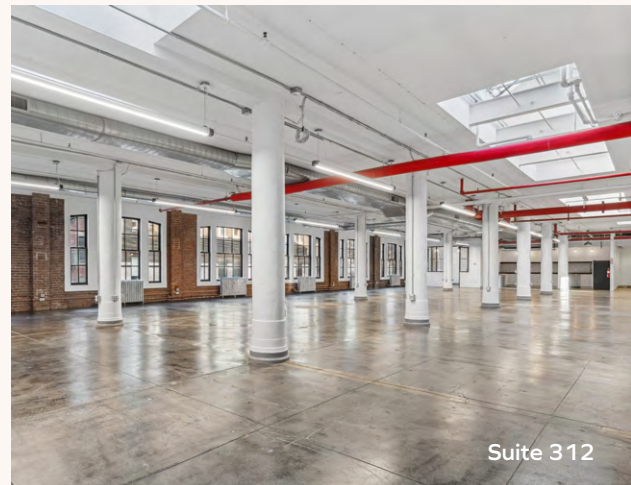




Suite 203



Suite 309



Suite 312



Suite 207





## Meatpacking District

Once known as an industrial hub for its slaughterhouses, New York City's Meatpacking District has transformed into a dynamic neighborhood blending luxury, culture, and history. Centrally located within the Meatpacking District, 416 West 13th Street is surrounded by the headquarters of leading tech, media, commerce, and financial corporations, including Google, Apple, X (formerly Twitter), Samsung, and more.

With immediate access to Citi Bikes, the West Side Highway, and the **1****2****3****A****C****E** and **L** subway lines, 416 West 13th Street offers unparalleled convenience for both work and leisure.







416 WEST 13TH STREET

