

TOWER 52



MIDTOWN'S
BEST KEPT SECRET



ELEVATE YOUR BUSINESS



Tower 52 is a remarkable 35-story Class-A office tower located in the prestigious **Plaza District**.

Tower 52 boasts a striking glass cube entrance, with a lobby that seamlessly integrates stone, glass, and wood materials throughout. The latest addition is a 6,000 SF amenity center with a beautiful 3,000 SF usable terrace, the perfect location to connect and collaborate with colleagues and clients.

SOPHISTICATED SPACIOUS STUNNING



- 3,000 SF usable terrace
- Coffee bar
- 20-person board room
- Pantry with bar and table seating
- Lounge areas for large and small groups





LOUNGE



PANTRY





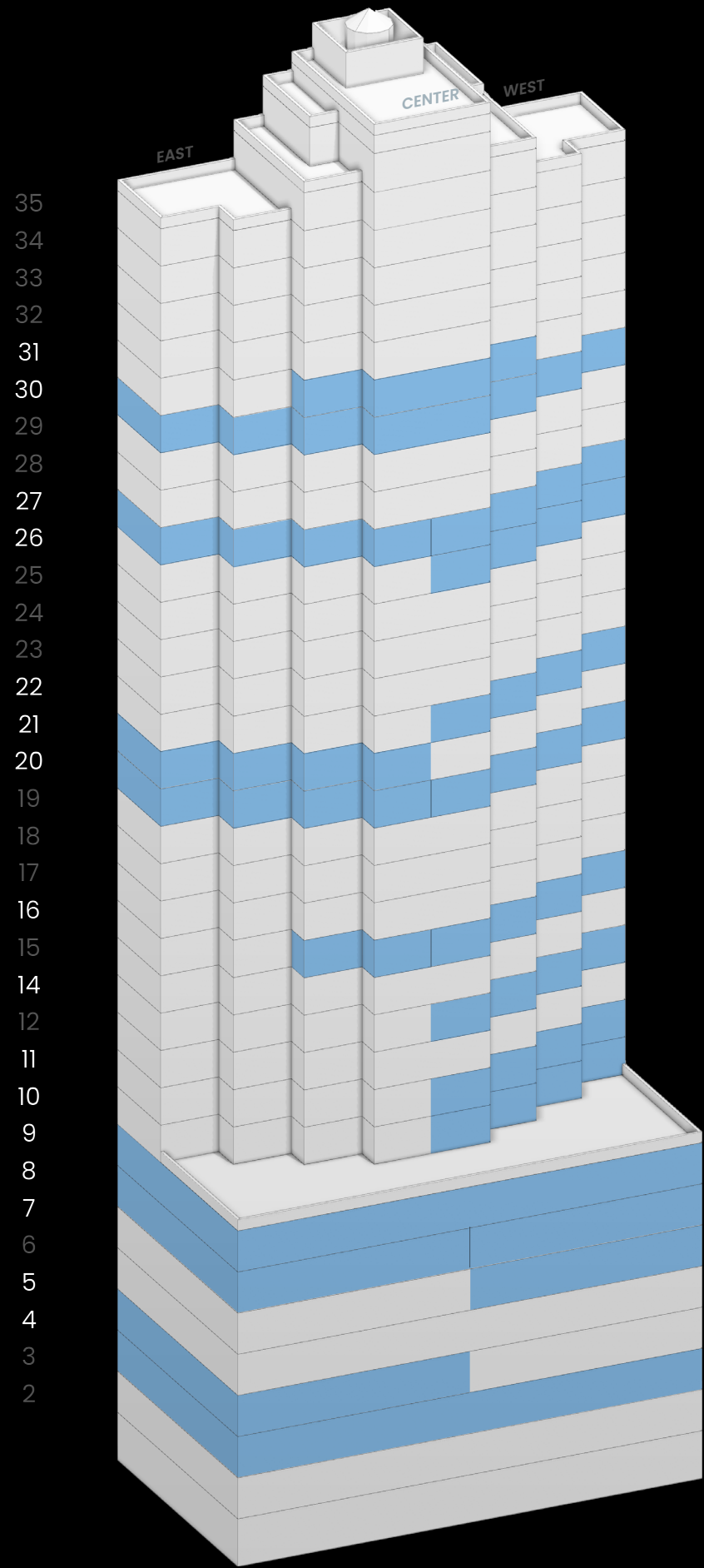
REJUVENATE,
COLLABORATE & ENGAGE

LOUNGE 5
4



STANDARD FINISHES

FLOOR RSF CONDITION CONFIGURATION



P20^W 2,953

2ND GEN

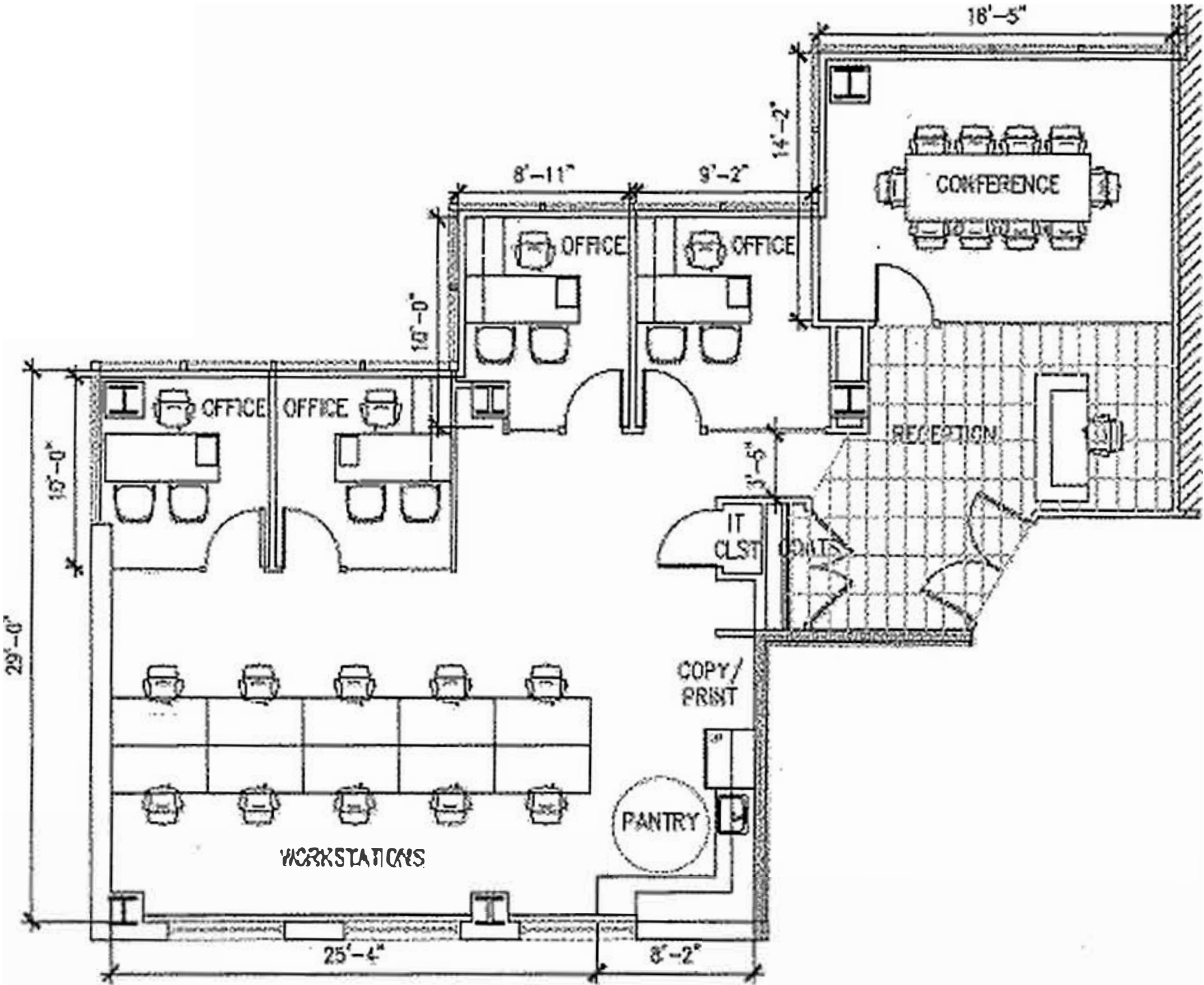
4 OFFICES • 1 CONFERENCE ROOM 10 PERSON OPEN AREA • PANTRY

PARTIAL 20th FLOOR

As-Built

2,953 RSF

- OFFICES4
- WORKSTATIONS10
- TOTAL HEADCOUNT14
- CONFERENCE ROOM (10PPL)
- PANTRY
- RECEPTION
- IT ROOM
- COPY/PRINT



CONVENIENT COMMUTES

