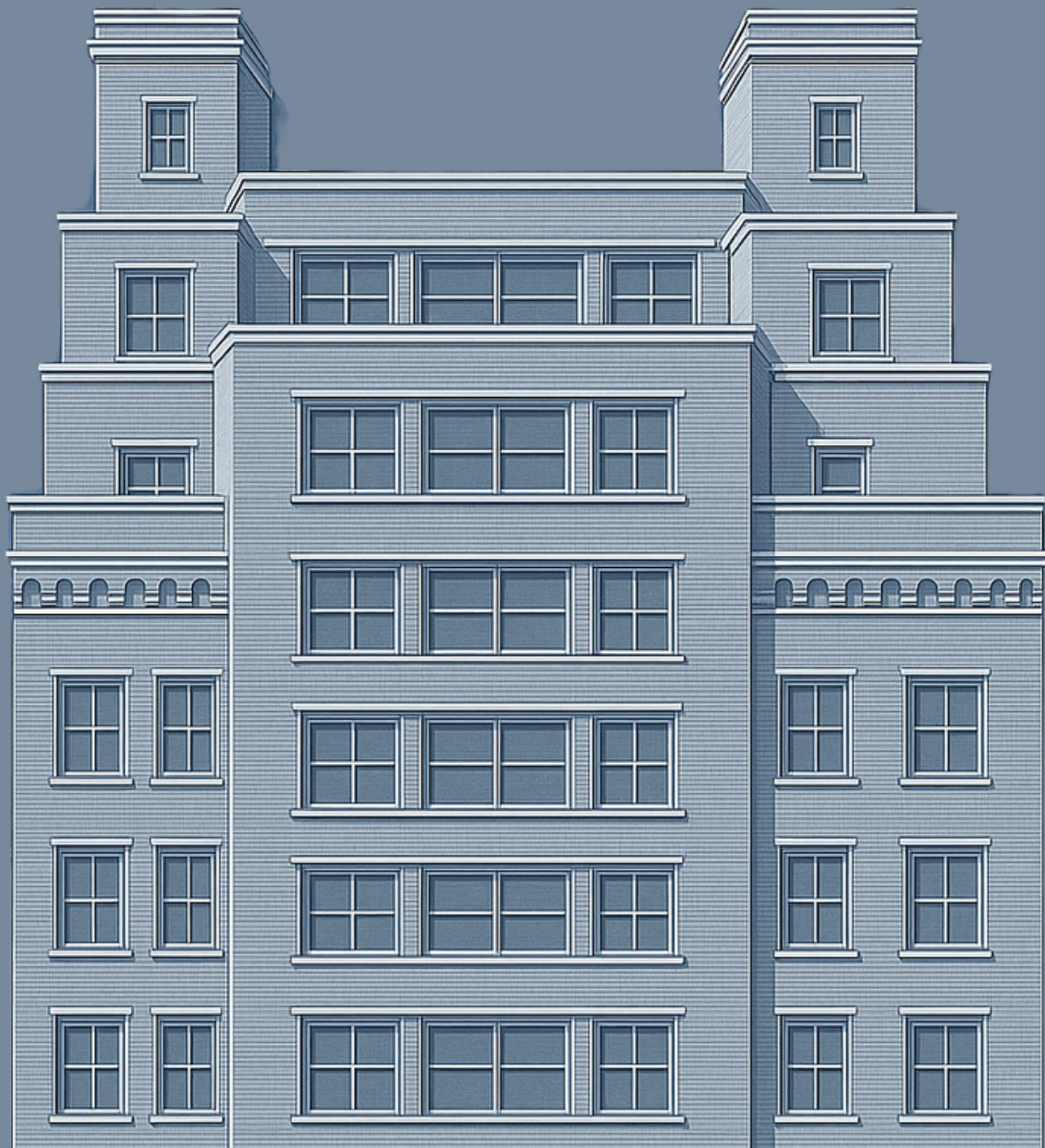


315WEST

THIRTY-FIFTH



A NEW STANDARD
ON 35th STREET

315WEST

THIRTY-FIFTH

315 West 35th Street delivers a bold fusion of heritage and innovation. This boutique pre-war building offers expansive layouts, natural light, and an authentic New York backdrop—ideal for creative teams, forward-thinking startups, and established firms looking to make a statement in Midtown’s rising west side.



315WEST

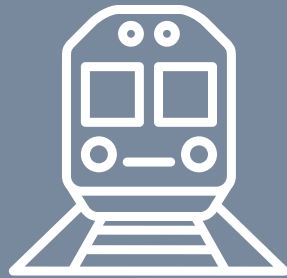
THIRTY-FIFTH

WHERE ELEVATION MEETS OPPORTUNITY.

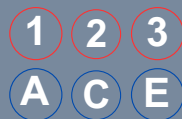
Located in the heart of Midtown Manhattan, 315 West 35th Street is a pre-war gem reimagined for the modern workforce. This historic building offers open, light-filled office spaces with high ceilings and a contemporary edge. Blending classic architectural character with modern upgrades, 315 provides an inspiring environment for companies seeking both style and performance in a prime location near Penn Station and Hudson Yards.



ACCESS



PUBLIC TRANSIT



Penn Station
LIRR



NATURAL LIGHT



PRIME LOCATION
Midtown West



ROOFTOP

A rooftop lounge area with modern outdoor furniture, a brick building with large windows, and a staircase. The space is furnished with several grey metal-framed sofas and armchairs with light blue cushions, arranged around low wooden coffee tables. In the background, there is a wooden dining table with black chairs. The building is made of red brick with large, multi-paned windows. A black metal staircase with railings leads up to an upper level. The floor is made of grey wooden planks. A black lantern sits on the ground near the brick wall. The overall atmosphere is modern and urban.

AMENITIES

HOST YOUR NEXT MEETING OR EVENT IN OUR PRIVATE
OUTDOOR ROOFTOP LOUNGE AND FULLY-EQUIPPED
CONFERENCE CENTER.